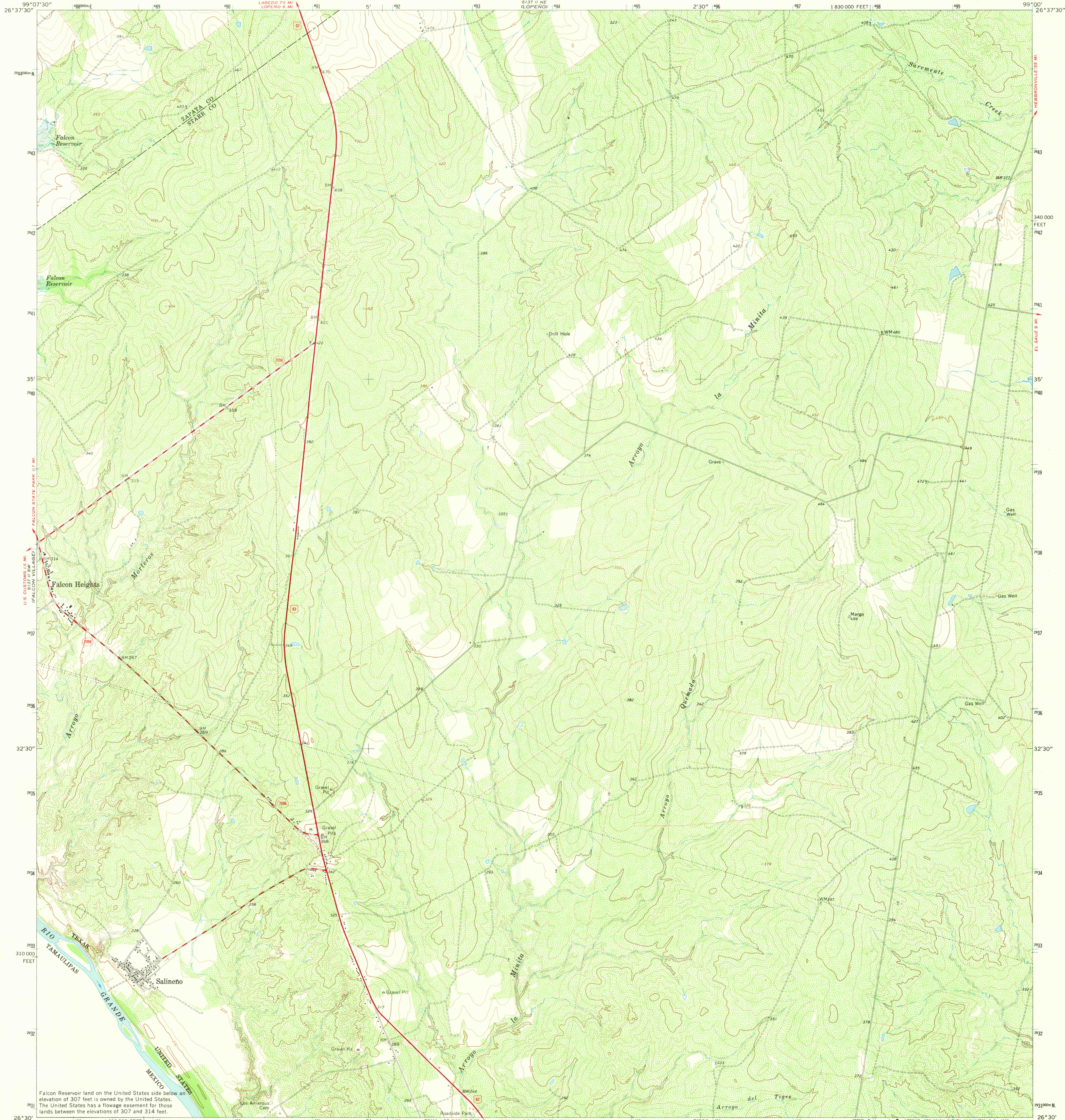


UNITED STATES
DEPARTMENT OF THE INTERIOR
GEOLOGICAL SURVEY

SALINEÑO QUADRANGLE
TEXAS
7.5 MINUTE SERIES (TOPOGRAPHIC)



Falcon Reservoir land on the United States side below an elevation of 307 feet is owned by the United States. The United States has a flowage easement for those lands between the elevations of 307 and 314 feet.

Mapped, edited, and published by the Geological Survey
Control by USGS, USC&GS, and International Boundary and Water Commission

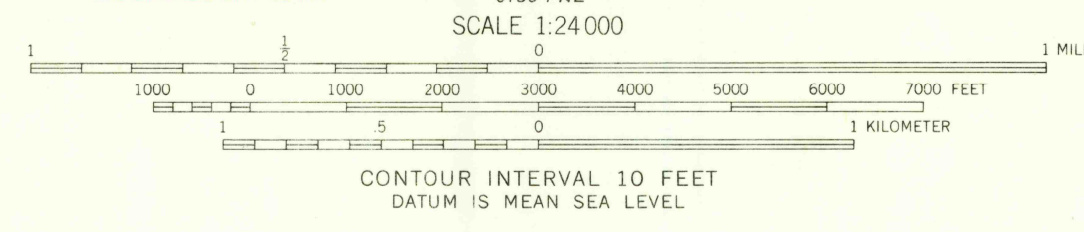
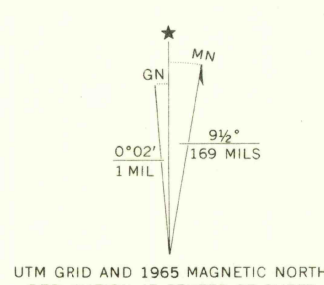
Topography by photogrammetric methods from aerial photographs taken 1964. Field checked 1965.

Polyconic projection. 1927 North American datum
10,000-foot grid based on Texas coordinate system,
south zone

1000-meter Universal Transverse Mercator grid ticks,
zone 14, shown in blue

Fine red dashed lines indicate selected fence lines
Areas covered by dashed light-blue pattern are subject
to controlled inundation

International Boundary Line not completely defined at date
of map, due to changes in river



THIS MAP COMPLIES WITH NATIONAL MAP ACCURACY STANDARDS
FOR SALE BY U.S. GEOLOGICAL SURVEY, DENVER, COLORADO 80225, OR WASHINGTON, D. C. 20242
A FOLDER DESCRIBING TOPOGRAPHIC MAPS AND SYMBOLS IS AVAILABLE ON REQUEST



ROAD CLASSIFICATION	
Heavy-duty	Light-duty
Medium-duty	Unimproved dirt
U.S. Route	State Route

U.S.G.S.
FILE COPY
TOPOGRAPHIC DIVISION

SALINEÑO, TEX.
N2630—W9900/7.5
1965
AMS 6137 II SE—SERIES V882