

Thank you for joining today's Software Developer Session webinar. We will begin promptly at 12:00 PM (EDT). Please take a few minutes to read through the following reminders before we begin:

A few reminders:

- You can ask questions at any point during the webinar using the Q&A pod located at the **top left of your screen**. We will answer as many as possible during today's event.
- Closed captioning will be available in the **lower left hand corner** of your screen.

To view shared content:

- Please follow these steps to ensure your browser can display all content:
 - Turn off all pop-up blockers.
 - When prompted, download and install the add-in. ([Adobe Help Page](#))
 - Close all of your browser windows and restart the browser.
- If you are still unable to view content, try using a different browser, such as Firefox.

Dial-In Instructions

- Audio **is** available through your computer speakers. Please be sure they are not muted.
- You can also dial in to the webinar using any of the conference call numbers provided below.

Line 1:	Dial: 1-877-336-1839 Passcode: 1352819
Line 2:	Dial: 1-877-873-8017 Passcode: 6215791
Line 3:	Dial: 1-877-873-8017 Passcode: 1985647



ACE Business Office

March 4, 2015

2015 ACE Software Developer Session



U.S. Customs and
Border Protection

ACE Status

Deborah Augustin
Executive Director, ABO

Tom Mills
Executive Director, CSPD



U.S. Customs and
Border Protection



Key Dates for ACE Transition

Deployment of Key ACE Capabilities

January 2015

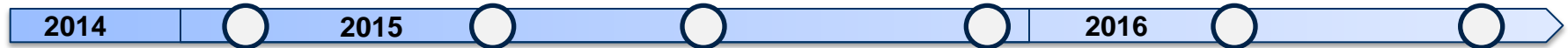
Electronic import manifest for air and export manifest for air/ocean/rail

June 2015

All entry types delivered

July 2016

All remaining core trade processing capabilities delivered



ACE Mandatory Dates

May 1, 2015

ACE mandatory for all electronic manifest filings

2 months away

November 1, 2015

ACE mandatory for all electronic cargo release and related entry summary filing

8 months away

October 1, 2016

ACE mandatory for all remaining electronic portions of the CBP cargo process

19 months away

ACE Progress

PRE-ARRIVAL MANIFEST

- Air Manifest
 - Integration with ACAS
- Air Manifest
 - Inbond
- Rail Manifest
 - Inbond
- Ocean Manifest
 - Inbond
- Truck Manifest
 - Inbond

ARRIVAL CARGO RELEASE

- Remaining Entry Types
- FTZ Admissions
- Diversions
- Remote Location Filing
- Certified from Summary
- Air/Ocean/Rail/Truck
 - Inbond Movements
 - Splits/Partials
 - Corrections/ Cancellations
 - ABI Query
- Initial Entry Types
 - 01, 11, 03
- Cargo Release Pilot - Air Baseline
- Unified SE/ISF filing

POST RELEASE ENTRY SUMMARY

- Liquidation, Protest, & Drawback
- Remaining ES Types
- Quota
- Statements
- Entry Summary Validations
- AD/CVD Case Mgmt
- Automated Forms
- Post Summary Corrections
- Initial Entry Summary Types
 - 01, 11, 03
- Periodic Monthly Statement
- eBond

EXPORTS

- Truck Export Manifest
- Ocean/Rail Export Manifest
- Air Export Manifest (CAMIR)
- AES Commodity filing and incorporation of AES into ACE
- Census/BIS reg changes
- DIS Ocean Manifest Pilot

PGA INTEGRATION

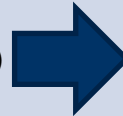
- FDA
- Remaining Import PGAs
- Remaining Export PGAs
- Document Image System (DIS)
- Interoperability Web Services
- PGA Message Set
- APHIS (Lacey Act)



Successful Completion of ACE Deployment D

Deployment D – January Release January 3, 2015

- **Manifest:**
 - Import Air Manifest
- **Cargo Release:**
 - Truck processing to include in-bonds
 - Entry Type 03 (Antidumping/Countervailing Duty)
 - *Certified from entry summary (all modes)**
 - Non-ABI processing (no trade impact until non-ABI for entry summary delivered)
- **Entry Summary:**
 - eBond (Single Transaction and Continuous Bonds)
- **Exports:**
 - Export Ocean and Rail Manifest
- **Partner Government Agency (PGA) Integration**
 - Interoperability Web Services
 - APHIS/309
 - Other Data Exchange
 - DEA/Exports
 - OFAC/Exports



eBond Status as of January 30, 2015:

- 8 of the 9 Surety Filer Agents have submitted eBonds
- 11,059 - New Bonds Created by eBond (via Portal & EDI)

Benefits:

- Single mechanism for the centralization of bonds, including a single place to locate any bond starting after eBond deployment.
- Reduction of paper processing
- Expedited release of cargo
- Increased traceability of bonds for audit purposes
- Expansion of bond issuance to beyond regular business hours.

Deployment Horizon

Deployment E - April Release April 18, 2015

- **Cargo Release:**
 - CBP Initiated Corrections
 - PGA Request for Redelivery
- **PGA Integration:**
 - Interoperability Web Services
 - APHIS/EAN
 - PGA Message Set
 - AMS

Deployment E - July Release June 27, 2015

- **Cargo Release:**
 - Remote Location Filing (RLF)
 - CBP Ability to Initiate Redelivery
 - Pipeline Entries Mobility App for Counter Processing of Entry Type 11 Mobility App for Counter Processing of Certificate of Registration-CBPF 4455 Automated Entry Types – 02, 06, 07, 12, 21, 22, 23, 31, 32, 34, 52
- **Post Release:**
 - Automated Entry Summary Types– 02, 06, 07, 12, 21, 22, 23, 31, 32, 34, 38, 51 52
 - Remote Location Filing (RLF)
 - Non-ABI Entry Summary
 - Quota Master Data
 - System Validations: Quota
 - Refactor entry summary types 01, 11, 03
 - Exporter Accounts
 - Trade Ability to Query Quota via ABI
- **Exports:**
 - Export Validation Messages and Holds (Air/Ocean/Rail)
 - Truck Manifest Processing (CA/MX) (Pilot Efforts Pending Publication of Federal Register Notice)
 - Document Image System (DIS)
 - FWS, OTEXA
 - IWS and Other Data Feeds
 - BTS, FCC, FWS, PHMSA, FDA
 - PGA Message Set
 - FAS, FWS, TTB, USDA (Cut Flowers), FDA
 - Other Data Exchange
 - FWS (Export: Licensing Forms)
 - NMFS (Export: Licensing Forms)



Technical Specifications for 11/1/15 Functionality

Draft CATAIR chapters and Implementation Guides for CBP functionality being made mandatory on November 1st are posted to CBP.gov

HOME > TRADE > ACE - AUTOMATED COMMERCIAL ENVIRONMENT TECHNICAL INFORMATION > ACE AUTOMATED BROKER INTERFACE (ABI) AND CBP AND TRADE AUTOMATED INTERFACE REQUIREMENTS (CATAIR)

Trade

- Basic Import and Export
- For The Trade Community
 - ACE and Automated Systems
 - Getting Started with Automated Systems
 - Technical Documentation
 - ACE Technical Information
 - ACE Federal Register Notices
 - Automated Commercial System/Broker Interface
 - Automated Export System
 - ACE Features
 - Border Interagency Executive Council

ACE Automated Broker Interface (ABI) and CBP and Trade Automated Interface Requirements (CATAIR)

These documents contain the technical requirements for transmitting automated data to the Automated Commercial Environment (ACE) via the Automated Broker Interface (ABI).

To download all ACE ABI CATAIR chapters in zip file format:

- [Download All - File 1](#)
- [Download All - File 2](#)

Getting Started

Chapters

Appendices

Supporting Documents

PGA Message Set

Draft Chapters for Future Capabilities

ACE ABI CATAIR Chapters



- [ACE ABI Batch & Block Control](#)
- [AD/CVD Case Information Query](#)
- [Broker Download](#)
- [ACE Cargo / Manifest / Entry Release Query](#)
- [ACE Cargo Release](#)
- [ACE Cargo Release Status Notification](#)
- [ACS Cargo Release Certified from an ACE Entry Summary](#)
- [Census Warning Override CATAIR Chapter](#)
- [Census Warning Query CATAIR Chapter](#)

Additional Resources:


- [List of CBP Certified ABI Software Vendors](#)

Questions? Contact your Client Representative or call 571-468-5500

ACE Secure Data Portal

-  [Log In](#)
-  [Apply for an Account](#)

Stay Informed

-  [Sign Up for Email Messages](#)



ACE Adoption Highlights



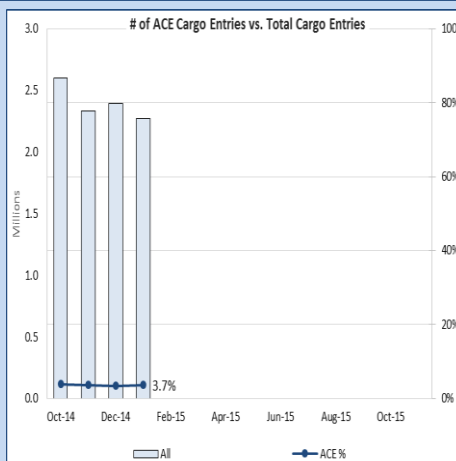
Software Vendors who File Entries/Entry Summaries

Certified to file entries	25%
Certified to file entry summaries	90%

Top 200 Filers in FY 2014

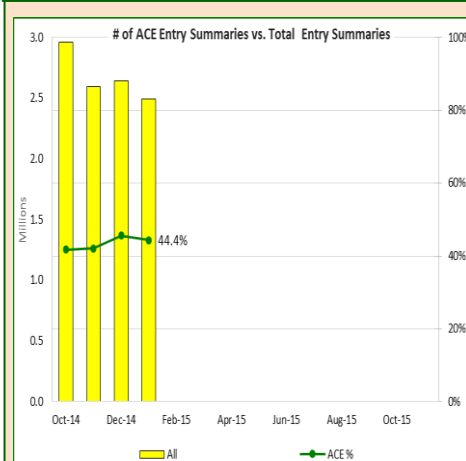
Approved to file entries in ACE	12.5%
Have filed an entry in ACE	11%
File > half entries in ACE	0
Approved to file entry summaries in ACEs	79%
Have filed an entry summary in ACE	68%
File > half entry summaries in ACE	31%

Cargo Entry Submission Rates



- Number of ACS cargo entries were down by 5% in January while ACE cargo entries grew by 1%.
- One possible reason for low submission rate may be that certified from summary functionality only became available during the last week of January.

Entry Summary Submission Rates



- For the first time in six months, the monthly percentage change in volume of ACE entry summaries filed dropped at a steeper rate than ACS entry summaries.

Questions?

askace@cbp.dhs.gov



www.cbp.gov/trade/automated/ace-faq

May 1, 2015

Mandated use of ACE for all electronic manifest filings.

November 1, 2015

Mandated use of ACE for electronic Cargo Release and associated Entry Summary.

October 1, 2016

Mandated use of ACE for all remaining electronic portions of the CBP cargo process.

Post Release: Entry Summary, Accounts & Revenue

Monica Crockett, Director, Entry Summary, Accounts & Revenue, ACE Business Office

Brian Lewandowski, ACE Business Office

Virginia McPherson, ACE Business Office



U.S. Customs and
Border Protection



Post Release: Entry Summary, Accounts & Revenue

What is included in the June 27th Deployment:

- Refactored Entry Summary Types 01, 03 and 11
- Refactored Entry Summary Types 01, 03 and 11
- Non-ABI Entry Summary
- Automated Entry Summary Types: › 02, 06, 07, 12, 21, 22, 23, 31, 32, 34, 38, 51, 52
- Remote Location Filing (RLF)

What is included in the October 31st Deployment:

- Statements
- Quota Master Data processing in ACE
- Trade Ability to Query Quota in ACE via ABI



Entry Summary

Entry Summary Create/Update CATAIR chapter changes to support June 27th Deployment

- Revised to support additional entry types in ACE entry summary filing.
- *10-Record Entry Type Code:* Removed the restriction of only filling 01, 03 and 11
- *11-Record Foreign Trade Zone Identifier:* Removed the note only data elements relevant to types 01, 03, and 11 are supported at this time.
- *Input 30 record Warehouse Withdrawal Information*
 - Removed the note only data elements relevant to types 01, 03, and 11 are supported at this time.
 - Added reference to re-warehouse (original text only included warehouse and warehouse withdrawal)
- *Input 41 record FTZ Status Information:* Removed the note only data elements relevant to types 01, 03, and 11 are supported at this time
- *Entry Summary Filing: Usage Notes*
 - e) Entry Type data reporting Considerations-updated table
 - bb) Warehouse, Re-Warehouse, & Warehouse Withdrawal Entry Summaries
 - Added reference to Re-Warehouse
- *AE Table 2 – Entry Type Codes:* Removed the note only data elements relevant to types 01, 03, and 11 are supported at this time. Updated Entry types.

Quota Processing and Notifications

Entry Summary Status Notification UC CATAIR Chapter changes support with June 27th Deployment

- Revised to indicate that a UC message will be returned for Quota Processing.
- *Entry Summary Status Notification message*: Updated to include a new Disposition Code, 'Q' or Quota Accepted, to describe the status of the Entry Summary.
- *Entry Summary Status Notification message*: Updated to include a new Notification Reason Code, '022' or Quota Issue, to describe the reason for the rejected Entry Summary, Disposition Type Code = 4 (Entry Summary Rejected).
- *Quota Line Status*: Created to provide information concerning Quota Status. This only occurs when the UC message returns a Disposition Type Code = Q or Disposition Type Code = 4 with a Notification Reason Code = 022.
 - Added a note that describes the status of the Quota Record, with the Prefix 'Q' to avoid any overlap with other codes.



Statements

Provide for current Daily and Monthly statement processing in ACE

- Align Daily and Monthly Statement record formats and output messages
 - The ACS “QR” application will be implemented into the new ACE Daily Statement “PF” application.
- Provide for the current statement update functionality
 - The ACS “HP” application will be implemented into the ACE Statement Update “SU” application.
- Provide one application for debit authorization payments (Application ID = PN)
 - The current ACS ACH Debit Authorization “QN” application will be incorporated into the current ACS ACH Debit Authorization/Entry Summary Presentation “PN” application and implemented into ACE.
- Provide one application for reroute functionality (Application ID = MO) for all statements
 - The ACS application “QO” will be incorporated into the current ACE Statement Request Reroute “MO” application. This will provide reroute capability for daily and monthly statements and ACH payment authorizations.



Document Image System (DIS)

Overview and Benefits:

The Document Image System (DIS) facilitates automated submission of documents and specific data by participating Trade Partners to CBP.

The submitted documents are electronically processed and securely stored by CBP.

Submitted documents are made available for review by CBP and Partner Government Agencies (PGAs) via the DIS application.

DIS will facilitate a single automated gateway that will accept supporting documents that may be needed during cargo importation and entry summary processes.

DIS Document Transmission Mechanisms

Electronic Data Interchange (EDI): The preferred mechanism of document transmission in DIS is via an XML payload transmitted to CBP via any one of three EDI technical mechanisms:

1. Secure FTP
2. Secure Web Services, or
3. Existing ABI MQ mechanism

Note: *Because EDI is supported by a modern, robust, guaranteed delivery and processing infrastructure, it is of greater value in a fully automated scenario for technically advanced, high-volume trade partners.*

Email: DIS allows certain documents to be transmitted via email to support Export Manifest and Simplified Entry.

- Only certain pre-approved documents can be submitted as email attachments
- Associated meta-data is sent in the Subject Line and Body of the email

Note: *Email is more suitable in scenarios that are “Quick-Easy-and-Interim,” Semi-Automated, and low-volume (total email size including all attachments may not exceed 10 MB)*



DIS Meta-Data

Meta-data is associated data submitted by the trade along with a transmitted document.

Meta-data elements can be common header-level elements (i.e. *Message Sender*, *Sent Date*, etc.) or transaction-specific (i.e. *Entry Summary Number*, etc.) sent via EDI SML or in the email subject line and body, where approved.

Meta-data elements are used to:

- Link the document to supporting contextual data
- Search for specific documents within DIS
- Further describe a transmitted document
- Provide specific transactional references for that document (Entry Summary, Bill, etc.)



Requests for Documents

Request for entry summary package after ACE entry summary has been filed (ABI Message UC2; commonly referred to as “documents required.”)

- The filer may choose to respond to the request for the entry summary package via the ACE Portal or DIS. Once the filer receives the action number (via ABI message), the filer may upload the requested documents in the portal or transmit to DIS. Documents not provided via the ACE Portal or DIS must be presented to CBP in paper form.

Request for specific documents after ACE entry summary has be filed (ABI Message UC3)

- This is a request for one or more specific documents, indicated by the CBP user in the “remarks” field. Trade must present these documents to CBP **within two business days from the request date**, either in electronic form via the ACE Secure Data Portal, via DIS, or in paper form.

Once CBP receives the required documents, the CBP users should update ACE accordingly by marking the “Documents Received” box in the “Actions” section. This generates a document receipt acknowledgement message (ABI Message UC7) to the filer. This electronic receipt does not constitute a statement regarding the accuracy, completeness, or compliance of the requested documentation.



Forms Supported by DIS: CBP & PGA

Documents transmitted via EDI:

- Animal and Plant Health Inspection Service (APHIS) STAT Supporting Statement
- APHIS Import Permit
- APHIS PPQ Form 368
- APHIS PPQ Form 203
- APHIS PPQ Form 586
- APHIS PPQ Form 587
- APHIS Transit Permit
- Foreign Gov't Sanitary Certificate (Veterinary Health Certificate)
- Ingredients List
- Phytosanitary Certificate
- Proof of Origin
- Center for Disease Control and Prevention (CDC) Importation Permission Letter
- CDC Permit Exemption Letter
- CDC Form 0728
- Commercial Invoice
- Invoice Worksheet
- Packing List
- Pro-Forma Invoice
- Defense Contract Management Agency (DCMA) Certificate of Duty Free Entry
- Environmental Protection Agency (EPA) Form 3520-21
- EPA Form 3520-1
- EPA Form 3540-1

Documents transmitted via EDI:

- EPA Pesticide Label
- EPA Pre-approved Vehicle/Engine Exemption Letter
- Food Safety and Inspection Service (FSIS) Form 9010-1
- FSIS Form 9060-5
- FSIS Form 9540-4
- FSIS Form 9540-5
- National Highway Traffic Safety Administration (NHTSA) HS-7, Declaration
- NHTSA HS-474
- National Oceanic and Atmospheric Administration (NOAA) Form 370
- NOAA Toothfish Pre-Approval
- Toxic Substances Control Act (TSCA) Import Certification Form

Supported for SE/Cargo Release:

- Packing List
- Commercial Invoice
- Other
- Passport, D/L, Govt Issued ID
- CBP-CF3299
- CBP-CF4455
- CBP-CF4457
- CBP-CF3229
- Vehicle title, certificates
- Permit

NOTE: Only documents announced via a Federal Register Notice can be transmitted via EDI.

DIS Pilots

Documents transmitted via email in specific formats:

- ACE Cargo Release (<http://www.cbp.gov/document/guidance/instructions-submitting-docs-cbp-support-ace-cargo-entries>)
- APHIS Veterinary Services – Federal Register / Vol. 80, No. 20 / Friday, January 30, 2015; further instructions from APHIS will be issued soon.
- IPR Pilot – CSMS# 14-000500
- NMFS Pilot – POC: Dale Jones at dale.jones@noaa.gov (note: interested participants must be certified to file ACR)
- MX Sugar Export License – CSMS# 15-000065
- Export Manifest (<http://www.cbp.gov/document/guidance/technical-requirements-ocean-export-manifest-submission-dis-email>)
- CEE Pilot – participants should contact their assigned CEE for further instructions



DIS Access

PGA participants may contact ITDS for Participating Government Agency on boarding procedures or view the procedures on the ITDS secure website.

Trade participants may contact their local Client Representatives Branch for trade on boarding procedures for transmitting documents to DIS via ABI.



eBond Processing in ACE

John Everett, ACE Business Office

Randy Slusher, Cargo Systems Program Directorate

Colleen Clarke, Roanoke Insurance Group, Inc.



U.S. Customs and
Border Protection



What is eBond?

- eBond is an electronic mechanism for the submission of Customs Bonds from a Surety to ACE via EDI to be stored and used for various downstream processes for which a bond is required.
- eBond allows for Single Transaction Bonds and Continuous Bonds will be accepted electronically
- eBond provides a single, centralized repository for all customs bonds within CBP
- eBond was successfully deployed to ACE production on 1/3/15



Why build eBond?

By building eBond, CBP hopes to realize the following benefits for CBP and Trade stakeholders:

- *Provide a single mechanism for the centralization of bonds, including a single place to locate any bond starting after eBond deployment.*
- *Reduction of paper processing*
- *Expedited release of cargo*
- *Increase traceability of bonds for audit purposes*
- *Expansion of bond issuance to beyond regular business hours.*

eBond Functionality

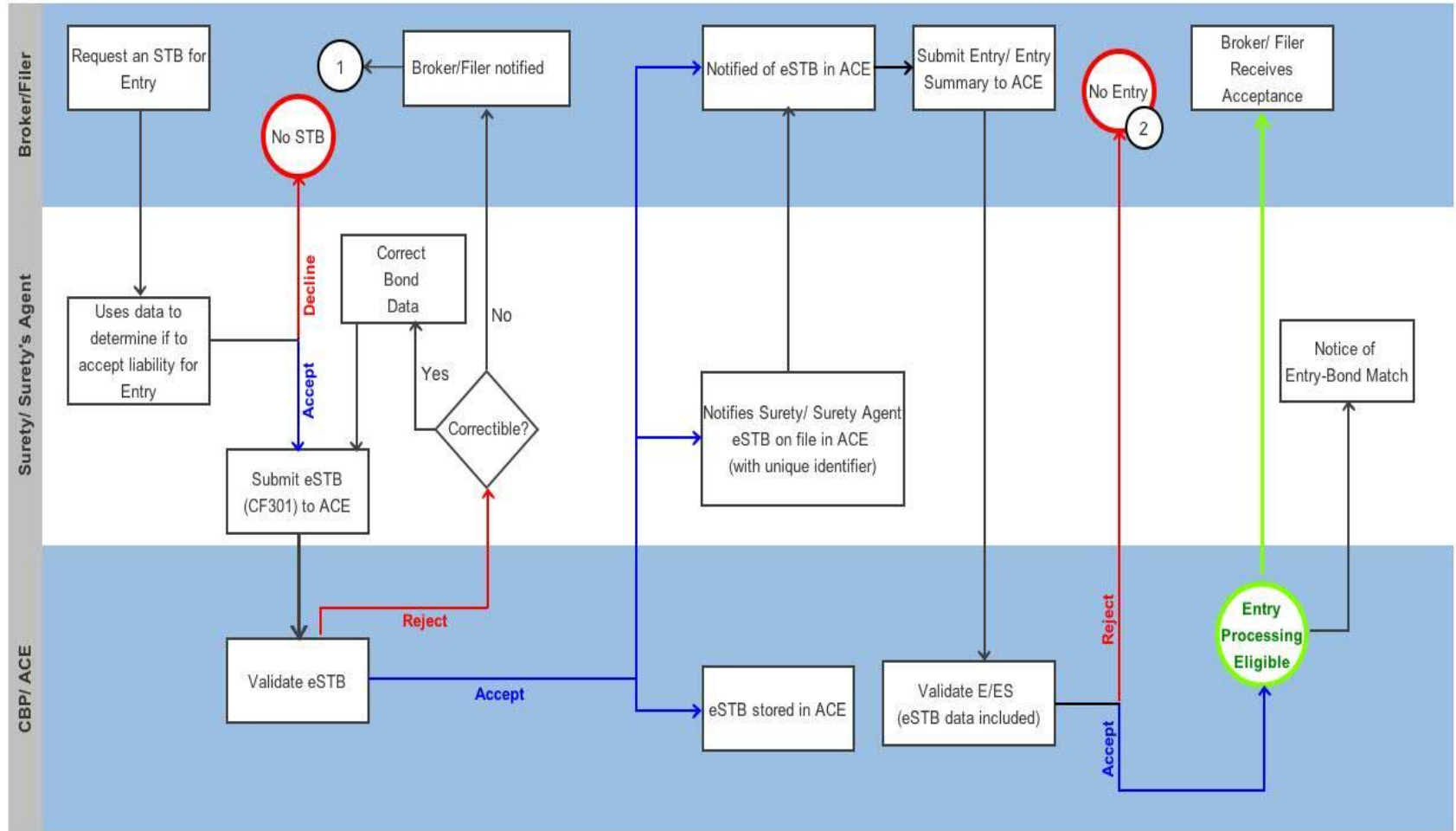
The following functionality is current available in eBond for ACE production:

- Ability to receive and process Single Transaction Bonds, Continuous Bonds, and Bond Riders electronically from a Surety or Surety Agent.
- Ability to provide bond status updates electronically to sureties and secondary notify parties.
- A new bond user interface for CBP users.
 - View capabilities for general CBP users, add/edit capabilities for the Office of Administration
- Bond validations for Simplified Entry (ACE Cargo Release) and ACE Entry Summary



eSTB Process Flow

e-Single Transaction Bond : High Level 'To-Be' Data Flow Concept



1 If the Broker/Filer opts to continue the eSTB process, the process would start again from "Request an STB for Entry".

2 If the rejection of the entry filed is due to the inability to match an Entry and Bond, the fier should contact the surety to determine what corrective actions should be taken.

eBond Stats

As of February 19, 2015:

- **25,893** New Bonds Created by eBond (via ACE Portal & EDI)
 - **14,061** Single Transaction Bonds (13 Activity Type 1 Matched to Entries)
 - **11,877** Continuous Bond
- **14,331** Updates to Bonds that existed prior to eBond deployment
- **8** Surety Filer Agents have submitted bonds via eBond
- **30,698** CB messages processed
- **299,781** BS status messages generated



eBond Rules

eBond Submission Requirements

Bonds may be input into ACE's eBond system in one of two ways:

1. Electronic submission of a bond from a surety or surety agent to ACE using the newly developed CB/CX message.
2. Submitted via email by a surety or surety agent to the Office of Administration to be input manually into ACE. Bonds submitted in this fashion are subject to policy and procedure issued by the Office of Administration for the manual input of bonds.



eBond via EDI

- Authorized Submitters:
 - Only Surety / Surety Agents will have the ability to file bonds in ACE. (B-Record)
 - As with all CBP EDI, the use of a service center to transmit the eBond is permitted. (A-Record)
- EDI Format:
 - Customs and Trade Automated Interface Requirements (**CATAIR**)
 - Referred to as the Implementation Guide or 'IG' by CBP
 - Fixed-width (positional) data elements
 - Multiple records used for data groupings
 - Each record is 80 characters in length.
- ACE CATAIR IG eBond Specific Chapters Now Available on CBP.gov
 - Customs eBond Create/Update ACE CATAIR Chapter (CB / CX)
 - Customs eBond Status Notification ACE CATAIR Chapter (BS)



Continuous Bond Rules

- Continuous Bonds may be submitted by a surety or surety agent electronically or via paper to the Office of Administration's Bond Team.
- All Continuous Bond Activity types should be submitted to eBond (using one of the two input methods).
- All Continuous Bonds entered into ACE eBond will be valid for both ACE and ACS transactions.
- All Continuous Bonds existing in ACE before the deployment remain valid, usable bonds.



Single Transaction Bond Rules

- Single Transaction Bonds used to secure Cargo Release (Activity Type 1) should only be submitted to eBond when filing ACE Cargo Release.
 - *This includes ACE Entry Summary Certified for ACE Cargo Release*
- Single Transaction Bonds used to secure Cargo Release filed in ACS should utilize current filing processes
 - ***This includes ACE Entry Summary Certified for ACS Cargo Release***



Single Transaction Bond Rules (Con't)

- Activity Type 16 Single Transaction Bonds should be filed to be input into eBond, operating under the current procedures in place for ISF.
 - *Further integration with ISF will be completed in future development*
- Activity Type 1A (Drawback) Single Transaction Bonds should be filed using existing paper processes, until such a time Drawback development is completed in ACE
- All other Single Transaction Bond Activity types should be filed in eBond.
- If a Single Transaction Bond is filed incorrectly in eBond (filed for an instance not allowed in eBond), that Single Transaction Bond should be voided, and the filer should obtain a paper bond for their transaction



Resources

- Information posted at <http://www.cbp.gov/trade/bonds> is intended to keep all interested parties up to date on the continuous and single transaction bond business process, and applicable changes or clarifications to that process.
- Any general questions about continuous or single transaction bond transmissions should be directed to (317) 614-4880 or via email to: cbp.bondquestions@dhs.gov



Post Deployment Update: Surety Perspective

In this Presentation...

- CBP Statistics: eSTB
- Challenges
 - eSTB vs. paper STB
- Secondary Notify Party
 - Transmission in eBond and Existing Bonds



eSTBs as of February 19, 2015

Statistics:

- 1,150 Activity Code 1 eSTBs
- 13 eSTB/ACE Entry matches
- 1,137 eSTBs that should be paper

What to do?

- If eSTB was not applicable to transaction:
 1. Void eSTB
 2. Submit paper STB



eSTBs as of February 19, 2015

eSTB

- ACE Cargo Release followed by ACE Entry Summary (2-step process)
- ACE Entry Summary Certified for ACE Cargo Release

Paper STB

- ACE Entry Summary Certified for ACS Cargo Release
- ACS Entry followed by ACE Entry Summary (2 step process)
- ACS Entry followed by ACS Entry Summary (2 step process)
- ACS Entry Summary Certified for Cargo Release



Challenges for Brokers

- Some ABI systems may indicate ACE, but the entry data/cargo release may really be ACS
- Limited functionality for ACE Cargo Release
 - Certain ports
 - Only entry types 01, 03, 11
 - No PGAs



Preventing Improper eSTBs

- Until the software vendors program for eBond, sureties/surety agents work with clients
- Bond Issuing Systems accommodate eSTB and paper STBs
 - System should warn if eSTB is chosen

Submitting eSTBS – Warning!

- System default to ACS STB
- If changed to ACE STB:
 - A warning message appears before the user can submit:

ATTENTION: You are about to submit an eSTB which is only for an ACE cargo release entry. If you intend to file any portion of the entry in ACS, you must file a paper bond.

Secondary Notify Party (SNP)

- Same as ABI routing # (port code + filer code)
- Receive notice on any bond where SNP is designated
- CBP allows up to 4 SNP's on a bond record
- We requested CBP add a transaction type to change SNP if there is a broker of record change
 - This is on the backlog for development
 - RDBT can update SNPs at request of broker (as importer POA) or surety/surety agent



Questions?

askace@cbp.dhs.gov



www.cbp.gov/trade/automated/ace-faq

May 1, 2015

Mandated use of ACE for all electronic manifest filings.

November 1, 2015

Mandated use of ACE for electronic Cargo Release and associated Entry Summary.

October 1, 2016

Mandated use of ACE for all remaining electronic portions of the CBP cargo process.

Arrival: Cargo Release

Vincent Annunziato, Director, Cargo Control & Release, ACE Business Office

Evan Johnson, Capability Owner, Cargo Release, ACE Business Office



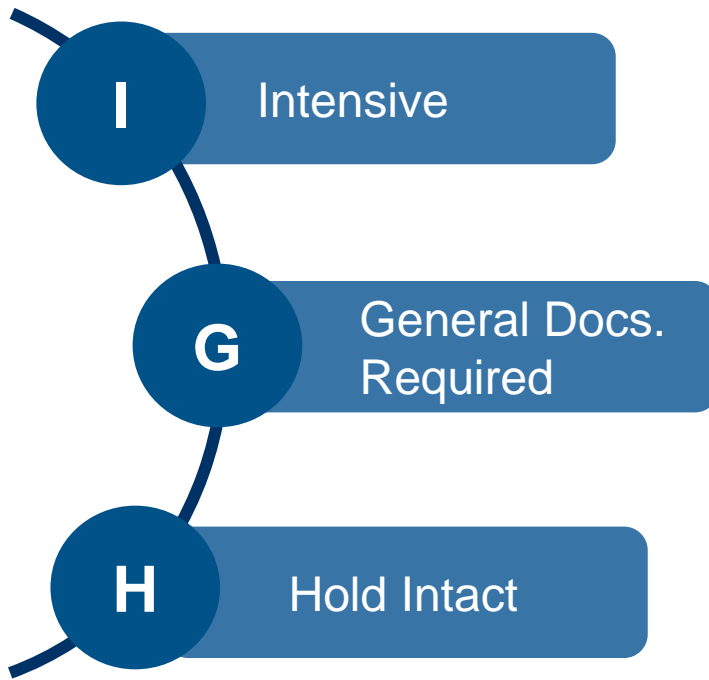
U.S. Customs and
Border Protection



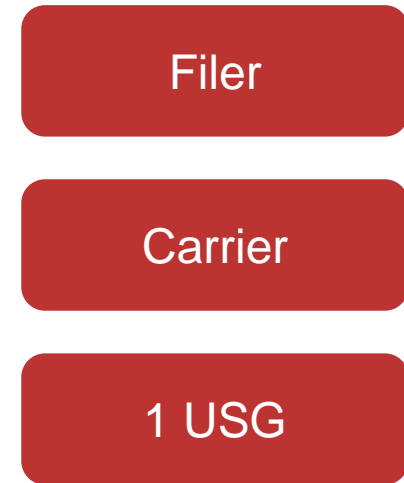
New Hold Technology for Cargo Release

Setting the hold: CBP vs. PGA

Types of Holds

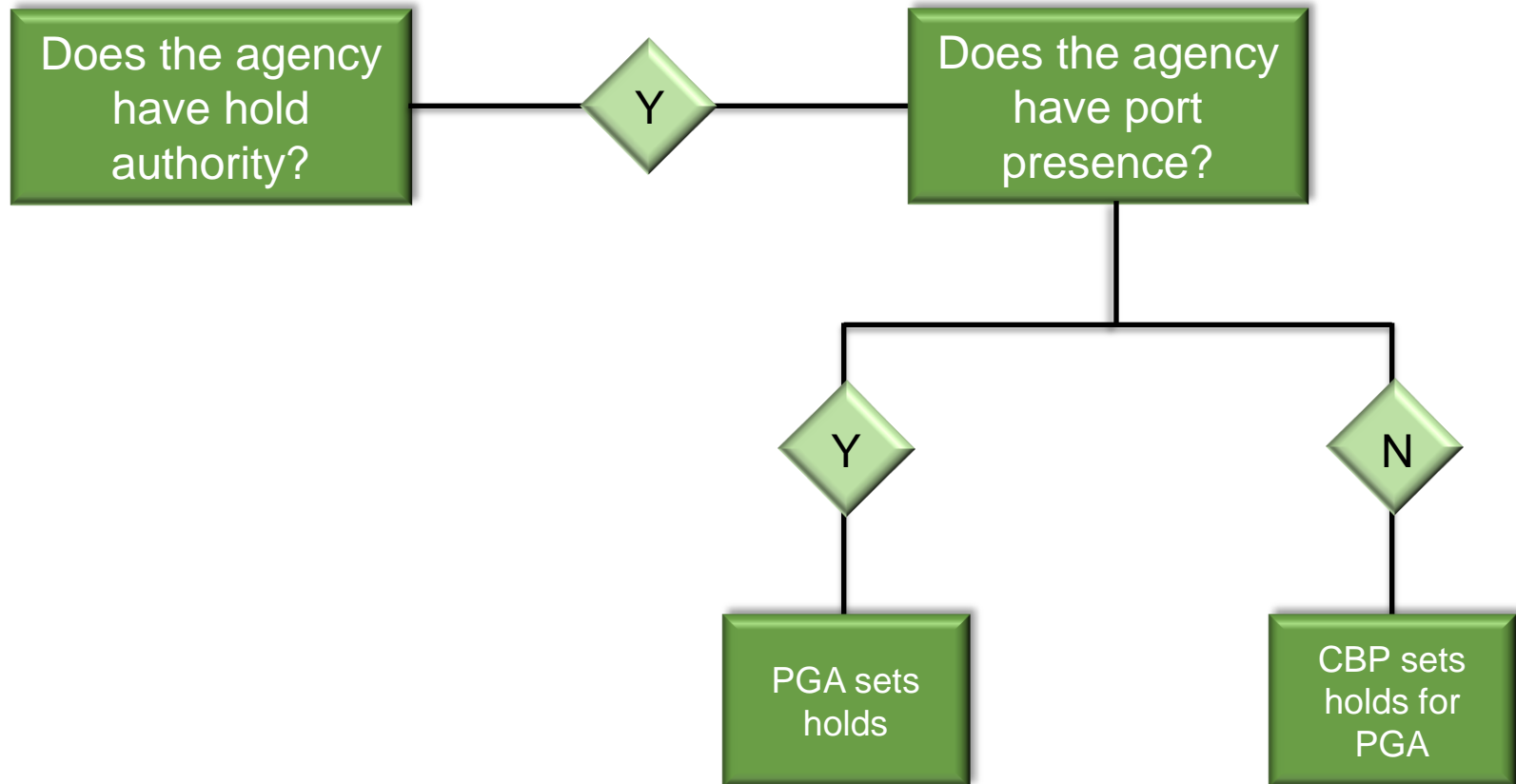


Messaging to Trade



ACE Hold Technology

Entry Holds based on Authority



Entry Hold Types

I

Intensive

- Set by CBP or PGA
- Entry-level hold
- Carrier does not get release

G

General Docs. Required

- Set by CBP or PGA
- Entry-level hold
- Carrier does not get release

H

Hold Intact

- Set by PGA
- Entry or entry line-level hold
- Carrier receives release
- Importer is notified

I

Intensive

G

General Docs.
Required

H

Hold Intact



Who Sets Holds?

PGAs with authority and port presence stop the release

Intensive / Document Review: carrier does not receive release

CBP sets holds for PGA and stops release

CBP receives automated requests from PGAs for holds

Approved holds act like CBP-initiated holds

Intensive / Document Review: CBP only sets intensive/doc. review

Hold Intact

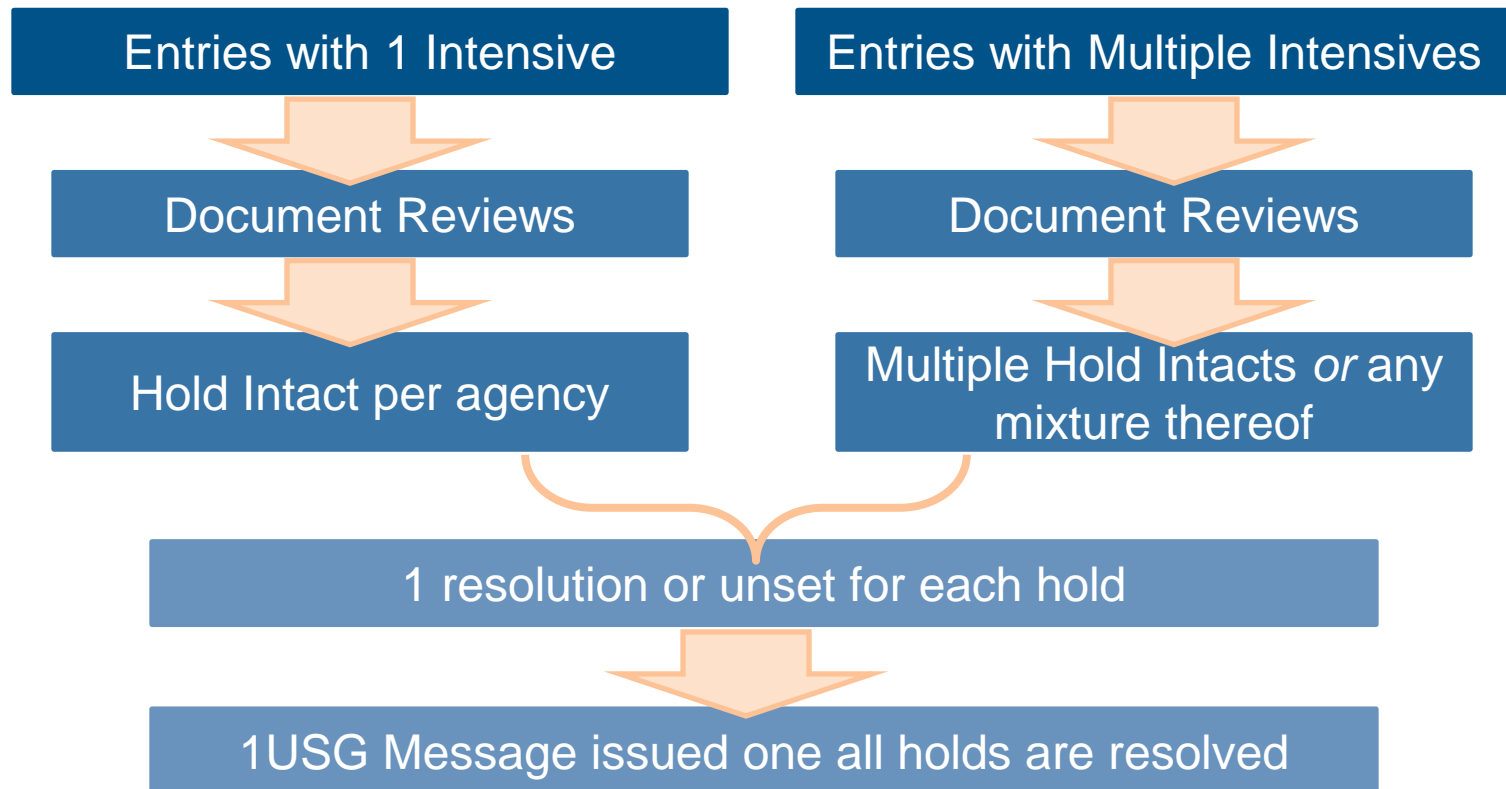
Any agency with requirements outside of the port can use hold intact

Hold Intact: carrier releases, but may not move into commerce



Downstream Effects of New Hold Technology

Hold technology was agreed to by the COAC Committee



Scenario 1: PGA/CBP does not set any holds

May Proceed		May Proceed		May Proceed		May Proceed		May Proceed	
Conditional Release		Conditional Release		Conditional Release		Conditional Release		Conditional Release	
1 USG Message		1 USG Message		1 USG Message		1 USG Message		1 USG Message	
Steps	Entity	Action	Messaging	to Hold	to Hold	to Hold	to Hold	to Hold	Comments
1	Trade	Sends Transaction	Trade Submission Successful	YES	YES	YES	YES	YES	Single May Proceed Message Single Message – Trade May Move to Destination Post Arrival/Release
2	Trade	Sends Transaction	Trade Submission Successful	NO	NO	NO	NO	NO	
3	CBP	System Validation	Passes Validations	YES	YES	YES	YES	YES	
4	PGA	Third Party System Validation	Passes Validations	YES	YES	YES	YES	YES	Single May Proceed Message Single Message - Trade May Move to Destination Post Arrival/Release
5	PGA	Returns Status to CBP	Passes Review Processes w/out Hits	May Proceed	May Proceed	May Proceed	May Proceed	May Proceed	
6	CBP	Bill Match	Release	Conditional Release	Conditional Release	Conditional Release	Conditional Release	Conditional Release	
7	CBP	System Validates no holds	1 USG Message	1 USG Message	1 USG Message	1 USG Message	1 USG Message	1 USG Message	Post Arrival/Release

Scenario 2: CBP sets Intensive due to PGA requirements. Border Crossing stops.

N/A	N/A
Manifest Hold	Manifest Hold
May Proceed	N/A
N/A	May Proceed
Conditional Release	Conditional Release
1 USG Message	1 USG Message

No Status received until exam or doc review performed
Carrier does not receive release. Goods held
PGA w/Authority Unsets Hold
CBP Unsets Hold on behalf of PGA w/out hold authority
Post Arrival/Release. Upon unset of hold

Steps	Entity	Action	Messaging	PGA w/Authority to Hold	Author to Hold				
1	Trade	Sends Transaction	Trade Submission Successful	YES	YES				
2	Trade	Sends Transaction	Trade Submission Successful	NO	NO				
3	CBP	System Validation	Passes Validations	No Override to Intensive	No Override to Intensive	N/A	N/A	System stops Release	Bucket 2 Validation
4	PGA	Third Party System Validation	Passes Validations	YES	YES	N/A	N/A	PGA Notified of CBP System Hit	Bucket 3 PGA Validations
5	PGA	Returns Status to CBP	Passes Review Processes w/out Hits	N/A	N/A	N/A	N/A	No Status received until exam or doc review performed	
6	CBP	Bill Match	Hold Messaging	Manifest Hold	Manifest Hold	N/A	N/A	Carrier does not receive release. Goods held	
7	PGA	Exam/Override	Unset Messaging	May Proceed	N/A	N/A	N/A	PGA w/Authority Unsets Hold	
8	CBP	Exam/Override	Unset Messaging	N/A	May Proceed	N/A	N/A	CBP Unsets Hold on behalf of PGA w/out hold authority	
9	CBP	Override to General	Release Messaging	Conditional Release	Conditional Release	Conditional Release	Conditional Release		
10	CBP	System Validates no holds	1 USG Message	1 USG Message	1 USG Message	1 USG Message	1 USG Message	Post Arrival/Release. Upon unset of hold	

Scenario 3: CBP system sets (Automated) Hold Intact for PGA. Requirements for examination outside of port jurisdiction

[illegible]

Implication of Holds Coordination & Outliers

Implication of Holds Coordination

- Multiple Intensives
- PGAs are agreeing to provide holds before arrival
- If holds have not been set in the proper time, then PGAs will have to utilize the re-delivery process to call freight back
- If the entry is not received within a reasonable amount of time before arrival, PGAs will receive an “Under Review” until the agency can respond
- Some agencies will have automatic holds
- 1USG Message will be sent after all of the holds have been unset, or all of the requirements are met

Outliers

Functionality	Inc.
<ul style="list-style-type: none"> • Queries: <ul style="list-style-type: none"> • Encryption capability – KN/KS • Firms Code – FI/FR • Ultimate Consignee – IJ • Manufacturer Query 	10 (at the earliest)
<ul style="list-style-type: none"> • Type 51 Entries – Government-to-Government entries 	
<ul style="list-style-type: none"> • BRASS, Line Release, FAST (Including FAST PAPS) 	10
<ul style="list-style-type: none"> • E-214 – Refactor on schedule for Increment 11 and 12; current system operational for November 2015 	11 & 12



ACE Cargo Release

Modes of Transportation

- Air [Deployment A: Basic | Deployment B: Advanced]
- Ocean [Deployment A: Basic | Deployment D: Advanced]
- Rail [Deployment A: Basic | Deployment D: Advanced]
- Truck [Deployment C: MOT 30 and 31 only; Basic]
[Deployment D: Advanced]

Entry Types

- 01 Consumption
- 03 AD/CVD
- 11 Informal

Complex Scenarios

- Split Shipments
- In-Bonds
- Partial

Use of eBond

- Electronic Single Transaction Bonds

Unified Entry / ISFfiling

Cancellations and Corrections

- Request Correction
- Request Cancellation



Locating Key CATAIR IGs

How to locate Key CATAIR IGs on cbp.gov:

ACE ABI CATAIR Batch & Block Control Chapter

- <http://www.cbp.gov/document/guidance/ace-abi-catair-batch-block-control-chapter>

ACE Cargo Release

- <http://www.cbp.gov/document/guidance/cargo-release-ace-catair-chapter>

ACE Cargo Release Status Notification

- <http://www.cbp.gov/document/guidance/cargo-release-status-notification-ace-catair-chapter>

ACE Cargo Release Error Codes (Input Validation Rules)

- <http://www.cbp.gov/document/guidance/cargo-release-error-codes>

****Contains stand-alone instructions for certifying for ACE Cargo Release from ACE Entry Summary****

ACE ABI CATAIR Entry Summary Create/Update

- <http://www.cbp.gov/document/guidance/ace-abi-catair-entry-summary-createupdate>



Split Shipments - Air

What is a split shipment?

- The shipment is tendered to the carrier as a single shipment.
- The carrier has for its own convenience split a shipment between two or more conveyances for transportation to the intended U.S. [CBP] port of destination.

What options does an importer have?

- The Importer still has the right to file a single entry for the shipment even though it arrives in the U.S. on multiple conveyances

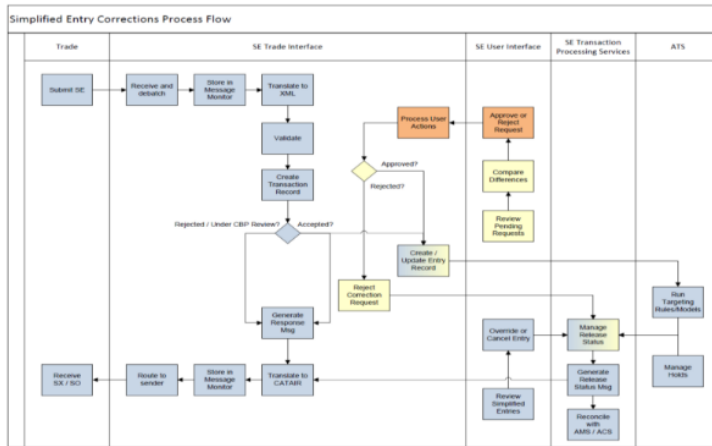
Election of Release Options via EDI

- Hold All
- Incremental Release under Immediate Delivery Procedures
- Results in automated posting to bill in the CBP manifest system



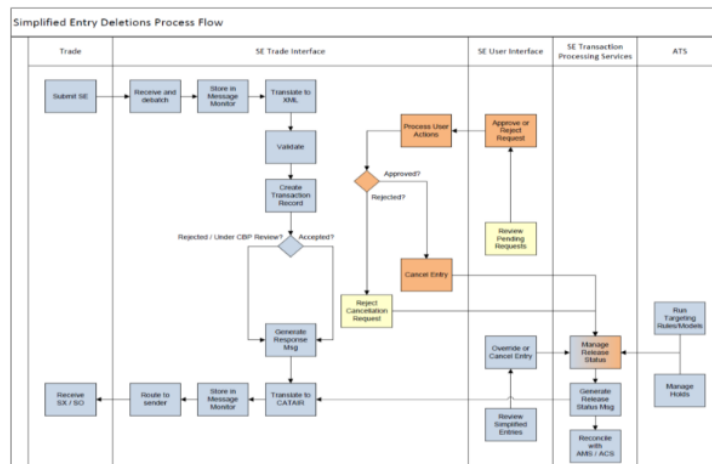
Corrections and Cancellations - Air

Process Flow – Corrections



- Ability for the Trade to apply for the Correction and Cancellation of existing ACE Entries (SE) via EDI
 - Updated Implementation Guide (IG) documentation
 - Integration of DIS
 - Updated Status Notification IG
 - New Business Rules added in for transaction processing.

Process Flow - Cancellations



- Ability for CBP Officer to process these EDI requests
 - New User Interface screens for CBPO
 - Hot Lists (filtered by port for the CBPO)
 - Ability to send Request adjudication results to the Trade with both standard messages and customized comments

Cancellation Request

Trade submits SE transaction with “D” (Delete/Cancel) Action in **SE10 Record**

- Submission must include filer contact name and contact phone number.

If the “D” action is submitted *before* any bill match, then the SE will be deleted from the SE system and the filer may reuse the entry number for another entry submission.

If the “D” action is submitted *after* bill match, then this becomes a Cancellation Request, and will be reviewed by CBP personnel prior to accepting or rejecting the request.

CBP Officer processes Cancellation requests

- New User Interface screens for CBPO
- CBPO can **Accept** or **Reject** the submission
- Ability to send request adjudication results to the Trade with both standard messages and customized comments



Cancellation Request (Con't)

CBPO has a selection of standard **reasons for Rejecting** a Cancellation request which may include:

Code	Description
------	-------------

- | | |
|----|--|
| 01 | Provided replacement entry is in cancelled status. |
| 02 | Provided replacement entry is in open status. |
| 03 | Provided replacement in-bond is in deleted status. |
| 04 | Requested document is not in DIS. |
| 05 | Additional information required via DIS. |
| 06 | Unable to verify CBP disposition for full bill quantity on original entry. |
| 07 | Provided replacement FTZ Admission is in deleted status. |
| 08 | Provided replacement FTZ Admission is in open status. |
| 09 | Original entry is on hold. Hold must be resolved prior to correction request. |
| 10 | Original entry is on hold. Hold must be resolved prior to cancellation request. |
| 11 | Original entry is on PGA hold. Hold must be resolved by PGA prior to correction request. |
| 12 | Original entry is on PGA hold. Hold must be resolved by PGA prior to cancellation request. |
| 13 | Other (See comments). |
| 14 | Original entry and replacement entry must contain identical bill number. |
| 15 | Original entry and replacement in-bond must contain identical bill number. |
| 16 | Provided replacement entry is not on file. |
| 17 | Provided replacement FTZ Admission is not on file. |



Cancellation Request (Con't)

If upon review of the Cancellation request, the CBPO Rejects the Cancellation, then the SE filer will be notified via the SO message.

Note: If a Request is Rejected, then a new Request must be submitted to pursue Cancellation action. *Each Request submission stands on its on.*

*(Please refer to the ACE Cargo Release Status Notification Implementation **SO** Guide)



ACE Cargo Release

Unified Entry / Importer Security Filing (ISF)

- Who is eligible to file?
- Filing be required to be submitted no later than 24 hours prior to the loading of the vessel.
- How will this work?
- Will all ACE Cargo Release (SE) software code have to be updated to accommodate this unified filing?



Certify from Summary for ACE Cargo Release

This is NOT the same as the code straight from the ACE Cargo Release CATAIR Chapter. You must review and code for it according to the *ACE ABI CATAIR Entry Summary Create/Update* Chapter.



Certify for ACE Cargo Release from ACE Entry Summary

Entry Summary Header Grouping

ES Transaction Input Structure Map

Control ID	Name	Designation	Loop Repeat (ACS/ACE) ¹
	Entry Summary TRANSACTION Grouping		
	Entry Summary HEADER Grouping	M	1
	Entry Summary Header Control	M	
10	Entry Summary Header Content	C	
20	Cargo Reference Information	C	
21	Identifying Trip Information	C	
	Cargo Manifest Grouping	C	999 / 9,999
22	Cargo Manifest Detail	M	
	Bill of Lading/In-bond Grouping	M	4
23	Bill of Lading/In-bond Detail	M	
	Conveyance Grouping	C	99
SE16	Conveyance Detail	M	(max use = 1)
	Equipment Grouping	O	99
SE17	Equipment Detail	M	(max use = 1)
30	Warehouse Withdrawal Information	C	
	Bond Grouping	C	2
31	Bond Detail	M	
	Consolidated Release Grouping	C	999 / 9,999
32	Release Detail	M	
33	Missing Document Information	C	
34	Entry Summary Header Fees	C	
35	PSC Header Reasons	C	
	PSC Filing Explanation Grouping	C	99
36	PSC Filing Explanation	M	
	PGA Header Level Substitution Grouping	C	9,999
PG00	PGA Substitution <start>	M	
	<See 'Partner Government Agencies' Chapter>	C	
PG00	PGA Substitution <end>	M	

Cargo Release Reference Data Grouping

ES Transaction Input Structure Map

Control ID	Name	Designation	Loop Repeat (ACS/ACE) ¹
	Entry Summary TRANSACTION Grouping		
	Cargo Release Reference Data Grouping	C	3
SE20	Cargo Release Reference Data	M	
	Header Level Cargo Entity Grouping	C	5
SE30	Entity Name and Type	M	
	Entity Street Address Grouping	C	3
SE35	Entity Street Address	M	
	Entity Geographic Area Grouping	C	1
SE36	Entity Geographic Area	M	
	Entry Summary LINE ITEM Grouping	C	998 / 99,999
	(...documented below...)	M	
	Entry Summary TOTALS Grouping	C	1
88	AD/CVD Duty Totals	C	
	Fee Total Grouping	C	9
89	Fee Total Detail	M	
90	Grand Totals	C	



Certify for ACE Cargo Release from ACE Entry Summary

Entry Summary Line Grouping



REMEMBER: The input structure, the format, business rules, etc. for certifying for ACE Cargo Release from ACE Entry Summary are unique, and are found only in the Create/Update ACE Entry Summary Chapter of the CATAIR.

ES Line Grouping Input Structure Map

Control ID	Name	Designation	Loop Repeat (ACS/ACE) ¹
	Entry Summary LINE ITEM Grouping	C	998 / 99,999
40	Line Item Header	M	
41	FTZ Status Information	C	
	Invoice/Ruling/Description Configurations	C	
	-EITHER-		
	EIP Invoice Grouping	C	999 / 9,999
42	Invoice Line Reference Detail	M	
43	Rulings Detail	C	
	Commercial Description Grouping	C	999
44	Commercial Description	M	
	-OR-		
	Non-EIP Rulings/Description Grouping	C	1
43	Rulings Detail	C	
	Commercial Description Grouping	C	999
44	Commercial Description	M	
	Article Party Grouping	C	6
47	Article Party	C	
	Line Level Cargo Entity Grouping	C	7
SE50	Entity Name and Type	M	
	Entity Street Address Grouping		
SE55	Entity Street Address	M	3
SE56	Entity City and Country	M	
	PGA Line Level Substitution Grouping	C	9,999
PG00	PGA Substitution <start>	M	
	<See 'Partner Government Agencies' Chapter>	C	
PG00	PGA Substitution <end>	M	

ACE Cargo Release – What's Next?

Modes of Transportation

- 50, 60, 70 (Pipeline)

Entry Types

- 21, 22, 23, 07, 12, 02, 06
- 06 FTZ

Use of Non-Automated Bills of Lading on the Cargo Release.



Questions?

askace@cbp.dhs.gov



www.cbp.gov/trade/automated/ace-faq

May 1, 2015

Mandated use of ACE for all electronic manifest filings.

November 1, 2015

Mandated use of ACE for electronic Cargo Release and associated Entry Summary.

October 1, 2016

Mandated use of ACE for all remaining electronic portions of the CBP cargo process.

Manifest: Import & Export

Bill Delansky, Director & Product Owner, Exports & Manifest, ACE Business Office

Jim Swanson, Director, Cargo Security & Controls, Office of Field Operations (OFO)



U.S. Customs and
Border Protection



ACE Air Import Manifest



U.S. Customs and
Border Protection



Air Import Manifest Changes with Transition to ACE

What will change when Air Manifest functionality is transitioned from Air AMS to ACE?

- Manifest data submitted to CBP will be subject to increased system validations that ensure compliance with published requirements
- Key data elements that will be subject to increased validation include:
 - Header format must comply with published Implementation Guide in Appendix D of the CAMIR
 - Consignee country codes must be entered and valid
 - Shipment weight values must be numeric and greater than zero
 - Bonds must be on file and valid
- Some system validations will be updated to provide more descriptive language for error codes
- Duplicate In-bond number edit in ACE MMM will cause duplicate 9 digit in-bond numbers to reject in ACE.

A complete list of changes can be found on the CBP website

<http://www.cbp.gov/trade/update-air-manifest-changes-ace-deployment-d-january-release>



ACE Air Import Manifest

- Deployment**
- January 3, 2015 – Air Import Manifest capabilities were deployed in ACE for a testing period of dual processing of air import manifest in both ACE and Air AMS.
-

- Impact**
- There was no trade impact with the deployment on January 3, 2015 as the system of record will remain Air AMS and all messaging back to the filers will be from Air AMS.
-

- Testing**
- The ACE Certification environment will be ready for trade testing in March 2015
 - Once the ACE certification environment is deployed there will be no Air AMS certification region.

ACE Air Import Manifest

Training

- CBP field training on the ACE system will be in March and April 2015 and field User Acceptance Testing (UAT) will occur during this time.

Dual Processing Period (January to May 2015)

- CBP will be monitoring the message processing (input and output) during the dual processing period of January to May 2015 for any discrepancies between Air AMS processing and ACE Air Manifest.
- Any issues with the ACE code discovered will be corrected during this period and any trade-identified issues will be communicated to the trade partner.
- Air QX/WX ABI In-bond processing will be converted to QP/WP processing by May 2015 operational deployment of ACE Air Manifest (updated IGs will be posted December 2014)

Air Import Manifest Information on CBP.gov

The full Air Import Manifest information notice on CBP.gov includes more details on the January 3, 2015 deployment.

<http://www.cbp.gov/trade/update-air-manifest-changes-ace-deployment-d-january-release>

Additional resources related to air manifest are also available for reference:

- For details on the updated header format, please access the published [Appendix D](#) posted to CBP.gov.
- For Air CAMIR: <http://www.cbp.gov/trade/acs/ams/camir>



ACE Truck Import Manifest



U.S. Customs and
Border Protection



Truck Manifest Changes and ACE Portal Changes

- ACE will be transitioning the ACE Truck application from the current legacy application onto the ACE Multi-Modal Manifest (MMM) platform.
- The transition will consist of **three increments** of work of which the first increment has been completed and deployed to production.

First increment	<ul style="list-style-type: none">• Provides the ability for carrier to arrive and export their in-bonds through the ACE portal for ocean, rail and truck carriers.• Air carriers will have this functionality available to them in May 2015
Second increment	<ul style="list-style-type: none">• Provide for ACE MMM to be the system of record for all truck filings.• This increment will resolve remaining in-bond issues and provide for consistent in-bond messaging from ACE.
Third increment	<ul style="list-style-type: none">• Resolve remaining coding and enhancements to truck to allow retirement of the ACE legacy truck application.



Truck Manifest: In-Bond Arrival and Export Enhancement

Background

- The ACE Portal currently provides truck carriers the ability to arrive and export in-bonds through a truck e-manifest shipment submitted via the Portal.
- To reduce in-bond arrival and export processing for ocean rail and truck in-bond transactions CBP has enhanced the in-bond arrival and in-bond export capabilities in the ACE Portal to allow all carriers to arrive, export, and cancel in-bond transactions associated to Bills of Lading (BOL) with the carriers Standard Carrier Alpha Code (SCAC)



Truck Manifest: In-Bond Arrival and Export Enhancement - continued

Inside the “tools” tab of the ACE Portal the “In-Bond arrival” and “In-Bond export” links have been redesigned to allow users to designate an “arrive by” level. The ACE Portal will display four (4) In-Bond action types: 1) In-Bond Arrival; 2) In-Bond Cancel Arrival; 3) In-Bond Export; and 4) In-Bond Cancel Export

Task Selector ?

- [User Account Administration](#)
- [Manifest Tools](#)
 - [Manifest](#)
 - [Manifest - Search](#)
 - [In-Bond Arrival](#)**
 - [In-Bond Cancel Arrival](#)
 - [In-Bond Export](#)
 - [In-Bond Cancel Export](#)

Account Selector List ? = □

[View Settings](#)

View By:

☐ Acct Name ☐ SCAC

In-Bond Arrival

* Indicates Field is Required

Search In-Bonds

Find In-Bonds where **In-Bond #** ▼ is

Destination Port is [Lookup Port Code](#)

Filing Date Range is to (45 day default)

* Arrive By: **In-Bond #** ▼

ACE Export Manifest



U.S. Customs and
Border Protection



ACE Export Manifest

Overview

- CBP is building an electronic export manifest process for the various modes of transportation (Air, Ocean, Rail, Truck)
 - ACE export manifest will provide the ability for trade to file and CBP to process electronic export manifests.
 - These export manifest developments will be rolled out as pilots over the next year pending publication of a final regulation change removing paper filing as an option and allowing for filing electronically by the trade.
-

Benefits

- Electronic manifest filing will eliminate costly and time consuming paper processes in place today.
- ACE will provide advance validation of the Internal Transaction Number (ITN) that will link the manifest and commodity filings.
- ACE will provide advance notice of holds prior to loading.
- ACE will automate the closing out of the in-bond transaction with one departure message.



ACE Export Manifest

Pilot Strategy

- Air export manifest is currently being coded for a tentative 2015 pilot which will be announced as part of a Federal Register Notice (FRN). Roll out will begin with limited carriers, limited ports.
 - Federal Register Notice (FRN) will be published soliciting trade participants for export manifest pilots for all modes.
-

Pilot Schedule

- Air export manifest pilot – Target: Early 2015
 - Ocean export manifest pilot – Target: Early 2015
 - Rail export manifest pilot – Target: Early 2015
 - Truck export manifest pilot – Target: TBD
-

PGA Integration

- Export PGA processing under the single window initiative will be mainly on the AES commodity filing by the export.
- The initial list of export PGAs that are working on ACE/AES are: Census, BIS, DDTC, EPA, AMS, OFAC, DEA, NMFS, FWS, ATF and additional agencies.
- TSA and export manifest automation for carriers



ACE Export Manifest Technical Information

- ACE export manifest has been coded in the industry standard message sets of Cargo-IMP 32nd Edition.
- CBP will code for XML IATA 2nd Edition, AIR CAMIR and for a CBP XML Unified Multi-Modal Manifest version.
- Currently a draft version of a possible Air CAMIR export manifest is published on the website and this will be updated as soon as possible with additional guidance on the additional message sets above (Cargo-IMP, IATA 2 and XML Unified Multi-Modal Manifest Message Set)

Draft Export Manifest Implementation Guidelines Posted to cbp.gov at the following address: <http://www.cbp.gov/trade/ace/export-manifest>



ACE Resources

- Public information, including Implementation Guides, available on CBP.gov/ACE:
<http://www.cbp.gov/ace>
- ACE outreach – calendar of events for public ACE outreach sessions
<http://www.cbp.gov/aceoutreach>
- Trade Subscriptions for Cargo Systems Messaging Service (CSMS):
<https://public.govdelivery.com/accounts/USDHSCBP/subscribe/new?qsp=938>
- Contact your assigned Client Representative



Technical Support?

Contact the CBP Help Desk for support and troubleshooting



1-866-530-4172

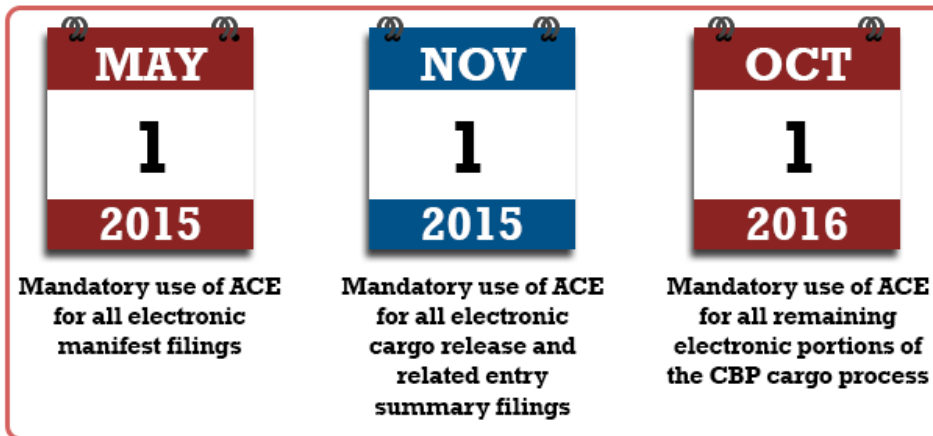


ACE.Support@cbp.dhs.gov



Questions?

askace@cbp.dhs.gov



May 1, 2015

Mandated use of ACE for all electronic manifest filings.

November 1, 2015

Mandated use of ACE for electronic Cargo Release and associated Entry Summary.

October 1, 2016

Mandated use of ACE for all remaining electronic portions of the CBP cargo process.