

APPENDIX A
SUPPORTING TECHNICAL INFORMATION

Location: User-specified point center at [REDACTED]

Ring (buffer): 1-miles radius

Description: SWB-CNB-001a

Summary of ACS Estimates		2013 - 2017	
Population			477
Population Density (per sq. mile)			190
Minority Population			14
% Minority			3%
Households			204
Housing Units			224
Housing Units Built Before 1950			96
Per Capita Income			21,067
Land Area (sq. miles) (Source: SF1)			2.50
% Land Area			99%
Water Area (sq. miles) (Source: SF1)			0.02
% Water Area			1%

	2013 - 2017 ACS Estimates	Percent	MOE (±)
Population by Race			
Total	477	100%	287
Population Reporting One Race	464	97%	342
White	462	97%	287
Black	2	0%	11
American Indian	0	0%	11
Asian	0	0%	11
Pacific Islander	0	0%	11
Some Other Race	0	0%	11
Population Reporting Two or More Races	12	3%	64
Total Hispanic Population	0	0%	13
Total Non-Hispanic Population	476		
White Alone	462	97%	286
Black Alone	2	0%	11
American Indian Alone	0	0%	11
Non-Hispanic Asian Alone	0	0%	11
Pacific Islander Alone	0	0%	11
Other Race Alone	0	0%	11
Two or More Races Alone	12	3%	64
Population by Sex			
Male	241	51%	139
Female	236	49%	177
Population by Age			
Age 0-4	25	5%	79
Age 0-17	108	23%	120
Age 18+	369	77%	230
Age 65+	58	12%	79

Data Note: Detail may not sum to totals due to rounding. Hispanic population can be of any race.

N/A means not available. **Source:** U.S. Census Bureau, American Community Survey (ACS) 2013 - 2017

Location: User-specified point center at
 Ring (buffer): 1-miles radius
 Description: SWB-CNB-001a

	2013 - 2017 ACS Estimates	Percent	MOE (±)
Population 25+ by Educational Attainment			
Total	331	100%	159
Less than 9th Grade	12	4%	69
9th - 12th Grade, No Diploma	46	14%	86
High School Graduate	121	37%	123
Some College, No Degree	89	27%	122
Associate Degree	25	7%	51
Bachelor's Degree or more	63	19%	48
Population Age 5+ Years by Ability to Speak English			
Total	452	100%	260
Speak only English	433	96%	238
Non-English at Home ¹⁺²⁺³⁺⁴	19	4%	40
¹ Speak English "very well"	19	4%	40
² Speak English "well"	0	0%	21
³ Speak English "not well"	0	0%	11
⁴ Speak English "not at all"	0	0%	11
³⁺⁴ Speak English "less than well"	0	0%	11
²⁺³⁺⁴ Speak English "less than very well"	0	0%	21
Linguistically Isolated Households*			
Total	0	100%	12
Speak Spanish	0	0%	11
Speak Other Indo-European Languages	0	100%	11
Speak Asian-Pacific Island Languages	0	0%	11
Speak Other Languages	0	0%	11
Households by Household Income			
Household Income Base	204	100%	97
< \$15,000	43	21%	70
\$15,000 - \$25,000	34	16%	68
\$25,000 - \$50,000	41	20%	104
\$50,000 - \$75,000	34	17%	83
\$75,000 +	53	26%	67
Occupied Housing Units by Tenure			
Total	204	100%	97
Owner Occupied	144	71%	105
Renter Occupied	60	29%	58
Employed Population Age 16+ Years			
Total	374	100%	249
In Labor Force	191	51%	169
Civilian Unemployed in Labor Force	13	3%	76
Not In Labor Force	183	49%	139

Data Note: Detail may not sum to totals due to rounding. Hispanic population can be of anyrace.

N/A means not available. **Source:** U.S. Census Bureau, American Community Survey (ACS)

*Households in which no one 14 and over speaks English "very well" or speaks English only.

Location: User-specified point center at
 Ring (buffer): 1-miles radius
 Description: SWB-CNB-001a

	2013 - 2017 ACS Estimates	Percent	MOE (±)
Population by Language Spoken at Home*			
Total (persons age 5 and above)	N/A	N/A	N/A
English	N/A	N/A	N/A
Spanish	N/A	N/A	N/A
French	N/A	N/A	N/A
French Creole	N/A	N/A	N/A
Italian	N/A	N/A	N/A
Portuguese	N/A	N/A	N/A
German	N/A	N/A	N/A
Yiddish	N/A	N/A	N/A
Other West Germanic	N/A	N/A	N/A
Scandinavian	N/A	N/A	N/A
Greek	N/A	N/A	N/A
Russian	N/A	N/A	N/A
Polish	N/A	N/A	N/A
Serbo-Croatian	N/A	N/A	N/A
Other Slavic	N/A	N/A	N/A
Armenian	N/A	N/A	N/A
Persian	N/A	N/A	N/A
Gujarathi	N/A	N/A	N/A
Hindi	N/A	N/A	N/A
Urdu	N/A	N/A	N/A
Other Indic	N/A	N/A	N/A
Other Indo-European	N/A	N/A	N/A
Chinese	N/A	N/A	N/A
Japanese	N/A	N/A	N/A
Korean	N/A	N/A	N/A
Mon-Khmer, Cambodian	N/A	N/A	N/A
Hmong	N/A	N/A	N/A
Thai	N/A	N/A	N/A
Laotian	N/A	N/A	N/A
Vietnamese	N/A	N/A	N/A
Other Asian	N/A	N/A	N/A
Tagalog	N/A	N/A	N/A
Other Pacific Island	N/A	N/A	N/A
Navajo	N/A	N/A	N/A
Other Native American	N/A	N/A	N/A
Hungarian	N/A	N/A	N/A
Arabic	N/A	N/A	N/A
Hebrew	N/A	N/A	N/A
African	N/A	N/A	N/A
Other and non-specified	N/A	N/A	N/A
Total Non-English	N/A	N/A	N/A

Data Note: Detail may not sum to totals due to rounding. Hispanic population can be of any race.

N/A means not available. **Source:** U.S. Census Bureau, American Community Survey (ACS) 2013 - 2017.

*Population by Language Spoken at Home is available at the census tract summary level and up.

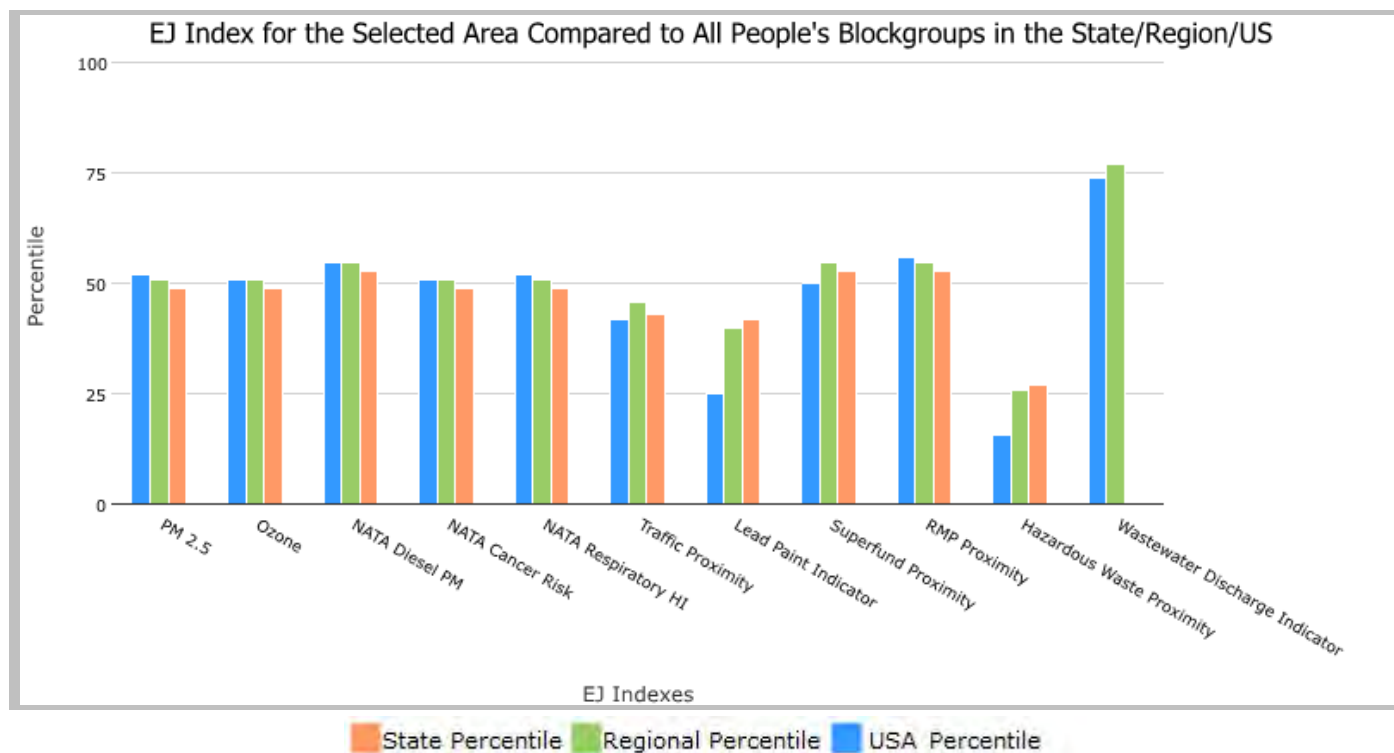
1 miles Ring Centered at [REDACTED], NEW YORK, EPA Region 2

Approximate Population: 477

Input Area (sq. miles): 3.14

SWB-CNB-001a

Selected Variables	State Percentile	EPA Region Percentile	USA Percentile
EJ Indexes			
EJ Index for PM2.5	49	51	52
EJ Index for Ozone	49	51	51
EJ Index for NATA* Diesel PM	53	55	55
EJ Index for NATA* Air Toxics Cancer Risk	49	51	51
EJ Index for NATA* Respiratory Hazard Index	49	51	52
EJ Index for Traffic Proximity and Volume	43	46	42
EJ Index for Lead Paint Indicator	42	40	25
EJ Index for Superfund Proximity	53	55	50
EJ Index for RMP Proximity	53	55	56
EJ Index for Hazardous Waste Proximity	27	26	16
EJ Index for Wastewater Discharge Indicator	N/A	77	74



This report shows the values for environmental and demographic indicators and EJSCREEN indexes. It shows environmental and demographic raw data (e.g., the estimated concentration of ozone in the air), and also shows what percentile each raw data value represents. These percentiles provide perspective on how the selected block group or buffer area compares to the entire state, EPA region, or nation. For example, if a given location is at the 95th percentile nationwide, this means that only 5 percent of the US population has a higher block group value than the average person in the location being analyzed. The years for which the data are available, and the methods used, vary across these indicators. Important caveats and uncertainties apply to this screening-level information, so it is essential to understand the limitations on appropriate interpretations and applications of these indicators. Please see EJSCREEN documentation for discussion of these issues before using reports.

1 miles Ring Centered at [REDACTED] NEW YORK, EPA Region 2

Approximate Population: 477

Input Area (sq. miles): 3.14

SWB-CNB-001a

No map available

Sites reporting to EPA	
Superfund NPL	0
Hazardous Waste Treatment, Storage, and Disposal Facilities (TSDF)	2

EJSCREEN Report (Version 2019)



1 miles Ring Centered at [REDACTED] NEW YORK, EPA Region 2

Approximate Population: 477

Input Area (sq. miles): 3.14

SWB-CNB-001a

Selected Variables	Value	State Avg.	%ile in State	EPA Region Avg.	%ile in EPA Region	USA Avg.	%ile in USA
Environmental Indicators							
Particulate Matter (PM 2.5 in $\mu\text{g}/\text{m}^3$)	5.88	7.61	4	7.88	2	8.3	6
Ozone (ppb)	35.1	44	0	44.4	0	43	11
NATA* Diesel PM ($\mu\text{g}/\text{m}^3$)	0.0847	1.05	1	0.941	<50th	0.479	<50th
NATA* Cancer Risk (lifetime risk per million)	21	32	16	32	<50th	32	<50th
NATA* Respiratory Hazard Index	0.24	0.49	13	0.47	<50th	0.44	<50th
Traffic Proximity and Volume (daily traffic count/distance to road)	79	1700	18	1400	18	750	31
Lead Paint Indicator (% Pre-1960 Housing)	0.5	0.56	41	0.51	46	0.28	77
Superfund Proximity (site count/km distance)	0.027	0.22	3	0.29	2	0.13	24
RMP Proximity (facility count/km distance)	0.033	0.5	1	0.58	2	0.74	2
Hazardous Waste Proximity (facility count/km distance)	2.3	42	43	30	49	4	80
Wastewater Discharge Indicator (toxicity-weighted concentration/m distance)	0	1.2	N/A	0.92	43	14	37
Demographic Indicators							
Demographic Index	24%	38%	41	37%	42	36%	39
Minority Population	3%	44%	7	44%	6	39%	7
Low Income Population	45%	31%	75	29%	78	33%	73
Linguistically Isolated Population	0%	8%	34	8%	33	4%	45
Population With Less Than High School Education	18%	14%	69	13%	72	13%	73
Population Under 5 years of age	5%	6%	48	6%	48	6%	43
Population over 64 years of age	12%	15%	39	15%	41	15%	43

* The National-Scale Air Toxics Assessment (NATA) is EPA's ongoing, comprehensive evaluation of air toxics in the United States. EPA developed the NATA to prioritize air toxics, emission sources, and locations of interest for further study. It is important to remember that NATA provides broad estimates of health risks over geographic areas of the country, not definitive risks to specific individuals or locations. More information on the NATA analysis can be found at: <https://www.epa.gov/national-air-toxics-assessment>.

For additional information, see: www.epa.gov/environmentaljustice

EJSCREEN is a screening tool for pre-decisional use only. It can help identify areas that may warrant additional consideration, analysis, or outreach. It does not provide a basis for decision-making, but it may help identify potential areas of EJ concern. Users should keep in mind that screening tools are subject to substantial uncertainty in their demographic and environmental data, particularly when looking at small geographic areas. Important caveats and uncertainties apply to this screening-level information, so it is essential to understand the limitations on appropriate interpretations and applications of these indicators. Please see EJSCREEN documentation for discussion of these issues before using reports. This screening tool does not provide data on every environmental impact and demographic factor that may be relevant to a particular location. EJSCREEN outputs should be supplemented with additional information and local knowledge before taking any action to address potential EJ concerns.

EJSCREEN ACS Summary Report



Location: User-specified point center at 45.007759, -73.483519
 Ring (buffer): 1-miles radius
 Description: SWB-CNB-002a

Summary of ACS Estimates		2013 - 2017		
Population				146
Population Density (per sq. mile)				66
Minority Population				10
% Minority				7%
Households				57
Housing Units				60
Housing Units Built Before 1950				14
Per Capita Income				20,994
Land Area (sq. miles) (Source: SF1)				2.22
% Land Area				99%
Water Area (sq. miles) (Source: SF1)				0.02
% Water Area				1%
		2013 - 2017 ACS Estimates	Percent	MOE (±)
Population by Race				
Total		146	100%	252
Population Reporting One Race		136	93%	323
White		136	93%	268
Black		0	0%	11
American Indian		0	0%	11
Asian		0	0%	11
Pacific Islander		0	0%	11
Some Other Race		0	0%	11
Population Reporting Two or More Races		10	7%	64
Total Hispanic Population		0	0%	11
Total Non-Hispanic Population		146		
White Alone		136	93%	268
Black Alone		0	0%	11
American Indian Alone		0	0%	11
Non-Hispanic Asian Alone		0	0%	11
Pacific Islander Alone		0	0%	11
Other Race Alone		0	0%	11
Two or More Races Alone		10	7%	64
Population by Sex				
Male		67	46%	115
Female		80	54%	177
Population by Age				
Age 0-4		8	6%	44
Age 0-17		42	29%	120
Age 18+		104	71%	182
Age 65+		18	12%	79

Data Note: Detail may not sum to totals due to rounding. Hispanic population can be of any race.

N/A means not available. Source: U.S. Census Bureau, American Community Survey (ACS) 2013 - 2017.

Location: User-specified point center at 45.007759, -73.483519
 Ring (buffer): 1-miles radius
 Description: SWB-CNB-002a

	2013 - 2017 ACS Estimates	Percent	MOE (±)
Population 25+ by Educational Attainment			
Total	96	100%	159
Less than 9th Grade	11	12%	69
9th - 12th Grade, No Diploma	12	13%	71
High School Graduate	30	32%	87
Some College, No Degree	38	40%	122
Associate Degree	14	15%	51
Bachelor's Degree or more	4	4%	25
Population Age 5+ Years by Ability to Speak English			
Total	138	100%	237
Speak only English	138	100%	204
Non-English at Home ¹⁺²⁺³⁺⁴	0	0%	11
¹ Speak English "very well"	0	0%	11
² Speak English "well"	0	0%	11
³ Speak English "not well"	0	0%	11
⁴ Speak English "not at all"	0	0%	11
³⁺⁴ Speak English "less than well"	0	0%	11
²⁺³⁺⁴ Speak English "less than very well"	0	0%	11
Linguistically Isolated Households*			
Total	0	0%	11
Speak Spanish	0	0%	11
Speak Other Indo-European Languages	0	0%	11
Speak Asian-Pacific Island Languages	0	0%	11
Speak Other Languages	0	0%	11
Households by Household Income			
Household Income Base	57	100%	97
< \$15,000	13	23%	70
\$15,000 - \$25,000	13	23%	68
\$25,000 - \$50,000	10	17%	92
\$50,000 - \$75,000	0	0%	11
\$75,000 +	21	37%	67
Occupied Housing Units by Tenure			
Total	57	100%	97
Owner Occupied	53	94%	105
Renter Occupied	3	6%	27
Employed Population Age 16+ Years			
Total	108	100%	170
In Labor Force	63	58%	134
Civilian Unemployed in Labor Force	2	2%	20
Not In Labor Force	45	42%	139

Data Note: Detail may not sum to totals due to rounding. Hispanic population can be of any race.

N/A means not available. **Source:** U.S. Census Bureau, American Community Survey (ACS)

*Households in which no one 14 and over speaks English "very well" or speaks English only.

EJSCREEN ACS Summary Report



Location: User-specified point center at 45.007759, -73.483519
 Ring (buffer): 1-miles radius
 Description: SWB-CNB-002a

	2013 - 2017 ACS Estimates	Percent	MOE (±)
Population by Language Spoken at Home*			
Total (persons age 5 and above)	N/A	N/A	N/A
English	N/A	N/A	N/A
Spanish	N/A	N/A	N/A
French	N/A	N/A	N/A
French Creole	N/A	N/A	N/A
Italian	N/A	N/A	N/A
Portuguese	N/A	N/A	N/A
German	N/A	N/A	N/A
Yiddish	N/A	N/A	N/A
Other West Germanic	N/A	N/A	N/A
Scandinavian	N/A	N/A	N/A
Greek	N/A	N/A	N/A
Russian	N/A	N/A	N/A
Polish	N/A	N/A	N/A
Serbo-Croatian	N/A	N/A	N/A
Other Slavic	N/A	N/A	N/A
Armenian	N/A	N/A	N/A
Persian	N/A	N/A	N/A
Gujarathi	N/A	N/A	N/A
Hindi	N/A	N/A	N/A
Urdu	N/A	N/A	N/A
Other Indic	N/A	N/A	N/A
Other Indo-European	N/A	N/A	N/A
Chinese	N/A	N/A	N/A
Japanese	N/A	N/A	N/A
Korean	N/A	N/A	N/A
Mon-Khmer, Cambodian	N/A	N/A	N/A
Hmong	N/A	N/A	N/A
Thai	N/A	N/A	N/A
Laotian	N/A	N/A	N/A
Vietnamese	N/A	N/A	N/A
Other Asian	N/A	N/A	N/A
Tagalog	N/A	N/A	N/A
Other Pacific Island	N/A	N/A	N/A
Navajo	N/A	N/A	N/A
Other Native American	N/A	N/A	N/A
Hungarian	N/A	N/A	N/A
Arabic	N/A	N/A	N/A
Hebrew	N/A	N/A	N/A
African	N/A	N/A	N/A
Other and non-specified	N/A	N/A	N/A
Total Non-English	N/A	N/A	N/A

Data Note: Detail may not sum to totals due to rounding. Hispanic population can be of any race.

N/A means not available. **Source:** U.S. Census Bureau, American Community Survey (ACS) 2013 - 2017.

*Population by Language Spoken at Home is available at the census tract summary level and up.

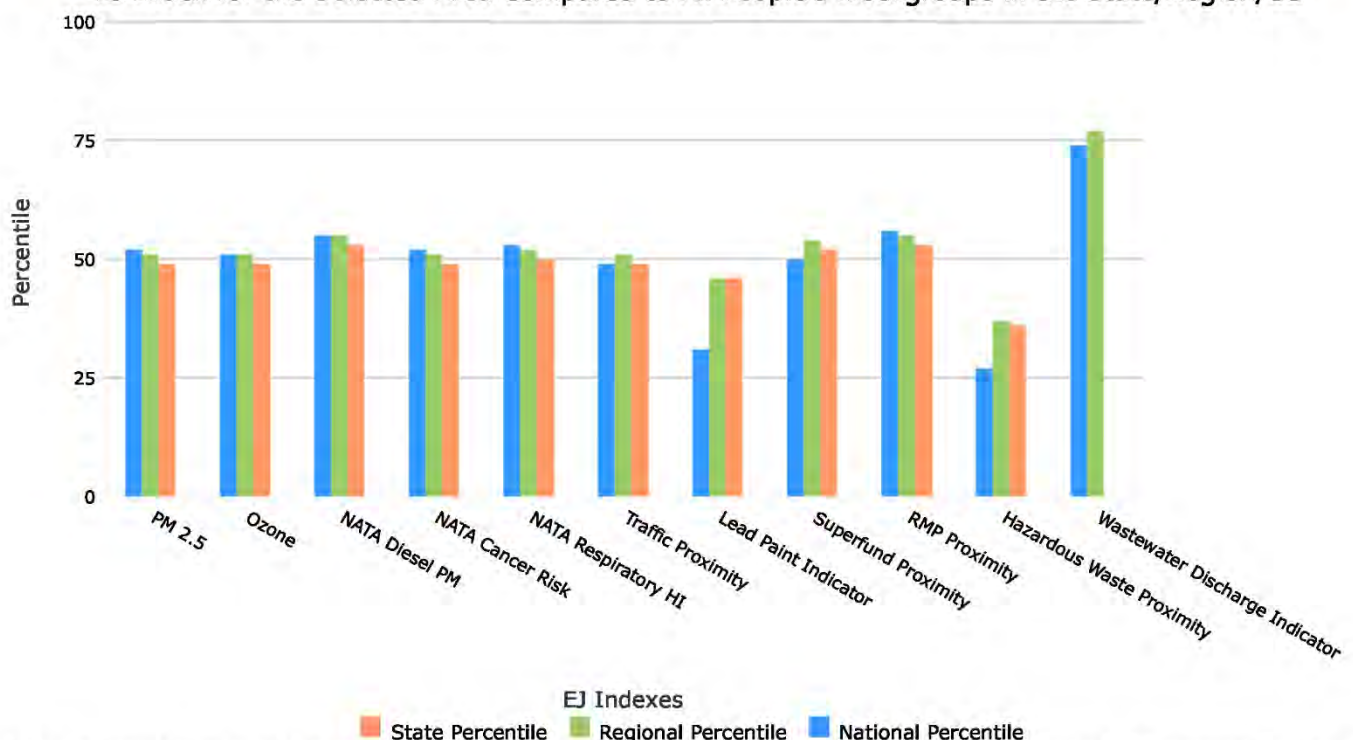
Save as PDF



EJSCREEN Report (Version 2019)
1 miles Ring Centered at 45.007759,-73.483519
NEW YORK, EPA Region 2
Approximate Population: 146
Input Area (sq. miles): 3.14
SWB-CNB-002a

Selected Variables	Percentile in State	Percentile in EPA Region	Percentile in USA
EJ Indexes			
EJ Index for Particulate Matter (PM 2.5)	49	51	52
EJ Index for Ozone	49	51	51
EJ Index for NATA* Diesel PM	53	55	55
EJ Index for NATA* Air Toxics Cancer Risk	49	51	52
EJ Index for NATA* Respiratory Hazard Index	50	52	53
EJ Index for Traffic Proximity and Volume	49	51	49
EJ Index for Lead Paint Indicator	46	46	31
EJ Index for Superfund Proximity	52	54	50
EJ Index for RMP Proximity	53	55	56
EJ Index for Hazardous Waste Proximity	36	37	27
EJ Index for Wastewater Discharge Indicator	N/A	77	74

EJ Index for the Selected Area Compared to All People's Blockgroups in the State/Region/US



This report shows the values for environmental and demographic indicators and EJSCREEN indexes. It shows environmental and demographic raw data (e.g., the estimated concentration of ozone in the air), and also shows what percentile each raw data value represents. These percentiles provide perspective on how the selected block group or buffer area compares to the entire state, EPA region, or nation. For example, if a given location is at the 95th percentile nationwide, this means that only 5 percent of the US population has a higher block group value than the average person in the location being analyzed. The years for which the data are available, and the methods used, vary across these indicators. Important caveats and uncertainties apply to this screening-level information, so it is essential to understand the limitations on appropriate interpretations and applications of these indicators. Please see EJSCREEN documentation for discussion of these issues before using reports.

Sites reporting to EPA	
Superfund NPL	0
Hazardous Waste Treatment, Storage, and Disposal Facilities (TSDF)	0

Selected Variables	Value	State		EPA Region		USA	
		Avg.	%tile	Avg.	%tile	Avg.	%tile
Environmental Indicators							
Particulate Matter (PM 2.5 in $\mu\text{g}/\text{m}^3$)	5.88	7.61	4	7.88	2	8.3	6
Ozone (ppb)	35.1	44	0	44.4	0	43	11
NATA* Diesel PM ($\mu\text{g}/\text{m}^3$)	0.0847	1.05	1	0.941	<50th	0.479	<50th
NATA* Air Toxics Cancer Risk (risk per MM)	21	32	16	32	<50th	32	<50th
NATA* Respiratory Hazard Index	0.24	0.49	13	0.47	<50th	0.44	<50th
Traffic Proximity and Volume (daily traffic count/distance to road)	19	1700	9	1400	8	750	15
Lead Paint Indicator (% pre-1960s housing)	0.33	0.56	24	0.51	29	0.28	64
Superfund Proximity (site count/km distance)	0.029	0.22	4	0.29	2	0.13	26
RMP Proximity (facility count/km distance)	0.035	0.5	2	0.58	2	0.74	2
Hazardous Waste Proximity (facility count/km distance)	0.94	42	31	30	34	4	63
Wastewater Discharge Indicator (toxicity-weighted concentration/m distance)	0	1.2	N/A	0.92	43	14	37
Demographic Indicators							
Demographic Index	27%	38%	45	37%	46	36%	45

Minority Population	7%	44%	16	44%	14	39%	16
Low Income Population	47%	31%	77	29%	80	33%	75
Linguistically Isolated Population	0%	8%	34	8%	33	4%	45
Population with Less Than High School Education	24%	14%	80	13%	82	13%	84
Population under Age 5	6%	6%	54	6%	54	6%	49
Population over Age 64	12%	15%	40	15%	41	15%	44

*The National-Scale Air Toxics Assessment (NATA) is EPA's ongoing, comprehensive evaluation of air toxics in the United States. EPA developed the NATA to prioritize air toxics, emission sources, and locations of interest for further study. It is important to remember that NATA provides broad estimates of health risks over geographic areas of the country, not definitive risks to specific individuals or locations. More information on the NATA analysis can be found at: <https://www.epa.gov/national-air-toxics-assessment>.

For additional information, see: www.epa.gov/environmentaljustice (<http://www.epa.gov/environmentaljustice>)

EJSCREEN is a screening tool for pre-decisional use only. It can help identify areas that may warrant additional consideration, analysis, or outreach. It does not provide a basis for decision-making, but it may help identify potential areas of EJ concern. Users should keep in mind that screening tools are subject to substantial uncertainty in their demographic and environmental data, particularly when looking at small geographic areas. Important caveats and uncertainties apply to this screening-level information, so it is essential to understand the limitations on appropriate interpretations and applications of these indicators. Please see EJSCREEN documentation for discussion of these issues before using reports. This screening tool does not provide data on every environmental impact and demographic factor that may be relevant to a particular location. EJSCREEN outputs should be supplemented with additional information and local knowledge before taking any action to address potential EJ concerns.

Location: User-specified point center at [REDACTED]

Ring (buffer): 1-miles radius

Description: SWB-SWS_001b

Summary of ACS Estimates		2013 - 2017		
Population				40
Population Density (per sq. mile)				15
Minority Population				1
% Minority				3%
Households				19
Housing Units				26
Housing Units Built Before 1950				7
Per Capita Income				27,666
Land Area (sq. miles) (Source: SF1)				2.57
% Land Area				99%
Water Area (sq. miles) (Source: SF1)				0.04
% Water Area				1%
		2013 - 2017 ACS Estimates	Percent	MOE (±)
Population by Race				
Total		40	100%	280
Population Reporting One Race		39	100%	349
White		38	97%	274
Black		0	0%	9
American Indian		1	2%	36
Asian		0	0%	9
Pacific Islander		0	0%	9
Some Other Race		0	0%	12
Population Reporting Two or More Races		0	0%	29
Total Hispanic Population		0	0%	12
Total Non-Hispanic Population		40		
White Alone		38	97%	274
Black Alone		0	0%	9
American Indian Alone		1	2%	36
Non-Hispanic Asian Alone		0	0%	9
Pacific Islander Alone		0	0%	9
Other Race Alone		0	0%	9
Two or More Races Alone		0	0%	29
Population by Sex				
Male		15	38%	130
Female		24	62%	213
Population by Age				
Age 0-4		1	4%	36
Age 0-17		5	12%	74
Age 18+		35	88%	230
Age 65+		11	29%	155

Data Note: Detail may not sum to totals due to rounding. Hispanic population can be of any race.

N/A means not available. **Source:** U.S. Census Bureau, American Community Survey (ACS) 2013 - 2017

Location: User-specified point center at [REDACTED]

Ring (buffer): 1-miles radius

Description: SWB-SWS_001b

	2013 - 2017 ACS Estimates	Percent	MOE (±)
Population 25+ by Educational Attainment			
Total	32	100%	253
Less than 9th Grade	1	3%	28
9th - 12th Grade, No Diploma	3	8%	64
High School Graduate	14	43%	150
Some College, No Degree	8	24%	106
Associate Degree	2	5%	58
Bachelor's Degree or more	7	22%	112
Population Age 5+ Years by Ability to Speak English			
Total	38	100%	272
Speak only English	35	92%	265
Non-English at Home ¹⁺²⁺³⁺⁴	3	8%	53
¹ Speak English "very well"	2	6%	47
² Speak English "well"	1	1%	20
³ Speak English "not well"	0	0%	11
⁴ Speak English "not at all"	0	0%	9
³⁺⁴ Speak English "less than well"	0	0%	11
²⁺³⁺⁴ Speak English "less than very well"	1	1%	21
Linguistically Isolated Households*			
Total	0	100%	13
Speak Spanish	0	0%	9
Speak Other Indo-European Languages	0	100%	9
Speak Asian-Pacific Island Languages	0	0%	9
Speak Other Languages	0	0%	9
Households by Household Income			
Household Income Base	19	100%	156
< \$15,000	4	19%	105
\$15,000 - \$25,000	2	10%	72
\$25,000 - \$50,000	5	28%	82
\$50,000 - \$75,000	4	19%	57
\$75,000 +	5	25%	82
Occupied Housing Units by Tenure			
Total	19	100%	156
Owner Occupied	14	71%	130
Renter Occupied	6	29%	116
Employed Population Age 16+ Years			
Total	35	100%	257
In Labor Force	25	71%	200
Civilian Unemployed in Labor Force	1	3%	36
Not In Labor Force	10	29%	176

Data Note: Detail may not sum to totals due to rounding. Hispanic population can be of anyrace.

N/A means not available. **Source:** U.S. Census Bureau, American Community Survey (ACS)

*Households in which no one 14 and over speaks English "very well" or speaks English only.

EJSCREEN ACS Summary Report



Location: User-specified point center at [REDACTED]

Ring (buffer): 1-miles radius

Description: SWB-SWS_001b

	2013 - 2017 ACS Estimates	Percent	MOE (±)
Population by Language Spoken at Home*			
Total (persons age 5 and above)	N/A	N/A	N/A
English	N/A	N/A	N/A
Spanish	N/A	N/A	N/A
French	N/A	N/A	N/A
French Creole	N/A	N/A	N/A
Italian	N/A	N/A	N/A
Portuguese	N/A	N/A	N/A
German	N/A	N/A	N/A
Yiddish	N/A	N/A	N/A
Other West Germanic	N/A	N/A	N/A
Scandinavian	N/A	N/A	N/A
Greek	N/A	N/A	N/A
Russian	N/A	N/A	N/A
Polish	N/A	N/A	N/A
Serbo-Croatian	N/A	N/A	N/A
Other Slavic	N/A	N/A	N/A
Armenian	N/A	N/A	N/A
Persian	N/A	N/A	N/A
Gujarathi	N/A	N/A	N/A
Hindi	N/A	N/A	N/A
Urdu	N/A	N/A	N/A
Other Indic	N/A	N/A	N/A
Other Indo-European	N/A	N/A	N/A
Chinese	N/A	N/A	N/A
Japanese	N/A	N/A	N/A
Korean	N/A	N/A	N/A
Mon-Khmer, Cambodian	N/A	N/A	N/A
Hmong	N/A	N/A	N/A
Thai	N/A	N/A	N/A
Laotian	N/A	N/A	N/A
Vietnamese	N/A	N/A	N/A
Other Asian	N/A	N/A	N/A
Tagalog	N/A	N/A	N/A
Other Pacific Island	N/A	N/A	N/A
Navajo	N/A	N/A	N/A
Other Native American	N/A	N/A	N/A
Hungarian	N/A	N/A	N/A
Arabic	N/A	N/A	N/A
Hebrew	N/A	N/A	N/A
African	N/A	N/A	N/A
Other and non-specified	N/A	N/A	N/A
Total Non-English	N/A	N/A	N/A

Data Note: Detail may not sum to totals due to rounding. Hispanic population can be of any race.

N/A means not available. **Source:** U.S. Census Bureau, American Community Survey (ACS) 2013 - 2017.

*Population by Language Spoken at Home is available at the census tract summary level and up.

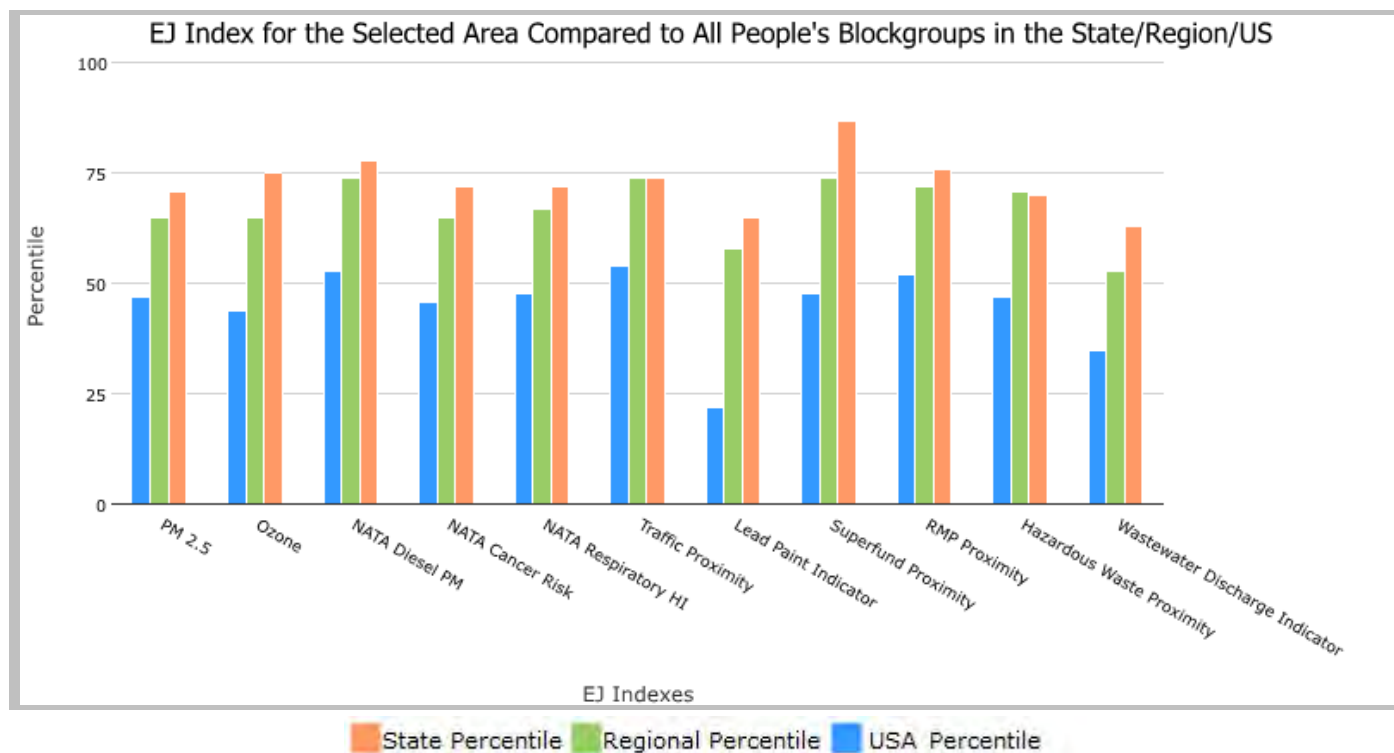
1 miles Ring Centered at [REDACTED], VERMONT, EPA Region 1

Approximate Population: 40

Input Area (sq. miles): 3.14

SWB-SWS_001b

Selected Variables	State Percentile	EPA Region Percentile	USA Percentile
EJ Indexes			
EJ Index for PM2.5	71	65	47
EJ Index for Ozone	75	65	44
EJ Index for NATA* Diesel PM	78	74	53
EJ Index for NATA* Air Toxics Cancer Risk	72	65	46
EJ Index for NATA* Respiratory Hazard Index	72	67	48
EJ Index for Traffic Proximity and Volume	74	74	54
EJ Index for Lead Paint Indicator	65	58	22
EJ Index for Superfund Proximity	87	74	48
EJ Index for RMP Proximity	76	72	52
EJ Index for Hazardous Waste Proximity	70	71	47
EJ Index for Wastewater Discharge Indicator	63	53	35



This report shows the values for environmental and demographic indicators and EJSCREEN indexes. It shows environmental and demographic raw data (e.g., the estimated concentration of ozone in the air), and also shows what percentile each raw data value represents. These percentiles provide perspective on how the selected block group or buffer area compares to the entire state, EPA region, or nation. For example, if a given location is at the 95th percentile nationwide, this means that only 5 percent of the US population has a higher block group value than the average person in the location being analyzed. The years for which the data are available, and the methods used, vary across these indicators. Important caveats and uncertainties apply to this screening-level information, so it is essential to understand the limitations on appropriate interpretations and applications of these indicators. Please see EJSCREEN documentation for discussion of these issues before using reports.

1 miles Ring Centered at [REDACTED], VERMONT, EPA Region 1

Approximate Population: 40

Input Area (sq. miles): 3.14

SWB-SWS_001b

No map available

Sites reporting to EPA	
Superfund NPL	0
Hazardous Waste Treatment, Storage, and Disposal Facilities (TSDF)	0

EJSCREEN Report (Version 2019)



1 miles Ring Centered at [REDACTED], VERMONT, EPA Region 1

Approximate Population: 40

Input Area (sq. miles): 3.14

SWB-SWS_001b

Selected Variables	Value	State Avg.	%ile in State	EPA Region Avg.	%ile in EPA Region	USA Avg.	%ile in USA
Environmental Indicators							
Particulate Matter (PM 2.5 in $\mu\text{g}/\text{m}^3$)	5.48	5.06	84	6.34	11	8.3	3
Ozone (ppb)	35.2	36.4	27	41.1	9	43	11
NATA* Diesel PM ($\mu\text{g}/\text{m}^3$)	0.0689	0.103	23	0.344	<50th	0.479	<50th
NATA* Cancer Risk (lifetime risk per million)	20	20	60	25	<50th	32	<50th
NATA* Respiratory Hazard Index	0.23	0.23	57	0.31	<50th	0.44	<50th
Traffic Proximity and Volume (daily traffic count/distance to road)	0.015	170	21	930	4	750	4
Lead Paint Indicator (% Pre-1960 Housing)	0.33	0.35	54	0.45	39	0.28	65
Superfund Proximity (site count/km distance)	0.02	0.14	11	0.15	1	0.13	17
RMP Proximity (facility count/km distance)	0.063	0.17	31	0.57	10	0.74	7
Hazardous Waste Proximity (facility count/km distance)	0.11	0.62	45	2.4	13	4	20
Wastewater Discharge Indicator (toxicity-weighted concentration/m distance)	6.6E-07	0.011	35	0.24	30	14	41
Demographic Indicators							
Demographic Index	21%	18%	71	24%	59	36%	32
Minority Population	3%	7%	26	24%	11	39%	6
Low Income Population	39%	28%	79	25%	79	33%	65
Linguistically Isolated Population	0%	1%	73	5%	46	4%	45
Population With Less Than High School Education	12%	8%	78	9%	71	13%	57
Population Under 5 years of age	4%	5%	33	5%	35	6%	25
Population over 64 years of age	29%	18%	93	16%	93	15%	93

* The National-Scale Air Toxics Assessment (NATA) is EPA's ongoing, comprehensive evaluation of air toxics in the United States. EPA developed the NATA to prioritize air toxics, emission sources, and locations of interest for further study. It is important to remember that NATA provides broad estimates of health risks over geographic areas of the country, not definitive risks to specific individuals or locations. More information on the NATA analysis can be found at: <https://www.epa.gov/national-air-toxics-assessment>.

For additional information, see: www.epa.gov/environmentaljustice

EJSCREEN is a screening tool for pre-decisional use only. It can help identify areas that may warrant additional consideration, analysis, or outreach. It does not provide a basis for decision-making, but it may help identify potential areas of EJ concern. Users should keep in mind that screening tools are subject to substantial uncertainty in their demographic and environmental data, particularly when looking at small geographic areas. Important caveats and uncertainties apply to this screening-level information, so it is essential to understand the limitations on appropriate interpretations and applications of these indicators. Please see EJSCREEN documentation for discussion of these issues before using reports. This screening tool does not provide data on every environmental impact and demographic factor that may be relevant to a particular location. EJSCREEN outputs should be supplemented with additional information and local knowledge before taking any action to address potential EJ concerns.

Location: User-specified point center at [REDACTED]

Ring (buffer): 1-miles radius

Description: SWB-RIB-001

Summary of ACS Estimates		2013 - 2017		
Population				10
Population Density (per sq. mile)				20
Minority Population				0
% Minority				3%
Households				4
Housing Units				6
Housing Units Built Before 1950				2
Per Capita Income				27,666
Land Area (sq. miles) (Source: SF1)				0.53
% Land Area				96%
Water Area (sq. miles) (Source: SF1)				0.02
% Water Area				4%
		2013 - 2017 ACS Estimates	Percent	MOE (±)
Population by Race				
Total		10	100%	280
Population Reporting One Race		10	99%	349
White		10	97%	274
Black		0	0%	9
American Indian		0	1%	36
Asian		0	0%	9
Pacific Islander		0	0%	9
Some Other Race		0	0%	12
Population Reporting Two or More Races		0	1%	29
Total Hispanic Population		0	0%	12
Total Non-Hispanic Population		10		
White Alone		10	97%	274
Black Alone		0	0%	9
American Indian Alone		0	1%	36
Non-Hispanic Asian Alone		0	0%	9
Pacific Islander Alone		0	0%	9
Other Race Alone		0	0%	9
Two or More Races Alone		0	1%	29
Population by Sex				
Male		5	45%	130
Female		6	55%	213
Population by Age				
Age 0-4		0	5%	36
Age 0-17		2	18%	74
Age 18+		8	82%	230
Age 65+		2	20%	155

Data Note: Detail may not sum to totals due to rounding. Hispanic population can be of any race.

N/A means not available. **Source:** U.S. Census Bureau, American Community Survey (ACS) 2013 - 2017

EJSCREEN ACS Summary Report



Location: User-specified point center at [REDACTED]
 Ring (buffer): 1-miles radius
 Description: SWB-RIB-001

	2013 - 2017 ACS Estimates	Percent	MOE (±)
Population 25+ by Educational Attainment			
Total	8	100%	253
Less than 9th Grade	0	3%	28
9th - 12th Grade, No Diploma	1	8%	64
High School Graduate	3	43%	150
Some College, No Degree	2	26%	106
Associate Degree	1	10%	58
Bachelor's Degree or more	2	20%	112
Population Age 5+ Years by Ability to Speak English			
Total	10	100%	272
Speak only English	9	94%	265
Non-English at Home ¹⁺²⁺³⁺⁴	1	6%	53
¹ Speak English "very well"	0	5%	47
² Speak English "well"	0	1%	20
³ Speak English "not well"	0	0%	11
⁴ Speak English "not at all"	0	0%	9
³⁺⁴ Speak English "less than well"	0	0%	11
²⁺³⁺⁴ Speak English "less than very well"	0	2%	21
Linguistically Isolated Households*			
Total	0	100%	13
Speak Spanish	0	0%	9
Speak Other Indo-European Languages	0	100%	9
Speak Asian-Pacific Island Languages	0	0%	9
Speak Other Languages	0	0%	9
Households by Household Income			
Household Income Base	4	100%	156
< \$15,000	0	11%	105
\$15,000 - \$25,000	0	10%	72
\$25,000 - \$50,000	1	24%	82
\$50,000 - \$75,000	1	21%	57
\$75,000 +	1	34%	82
Occupied Housing Units by Tenure			
Total	4	100%	156
Owner Occupied	3	81%	130
Renter Occupied	1	19%	116
Employed Population Age 16+ Years			
Total	9	100%	257
In Labor Force	6	72%	200
Civilian Unemployed in Labor Force	0	3%	36
Not In Labor Force	2	28%	176

Data Note: Detail may not sum to totals due to rounding. Hispanic population can be of anyrace.

N/A means not available. **Source:** U.S. Census Bureau, American Community Survey (ACS)

*Households in which no one 14 and over speaks English "very well" or speaks English only.

EJSCREEN ACS Summary Report



Location: User-specified point center at [REDACTED]

Ring (buffer): 1-miles radius

Description: SWB-RIB-001

	2013 - 2017 ACS Estimates	Percent	MOE (±)
Population by Language Spoken at Home*			
Total (persons age 5 and above)	N/A	N/A	N/A
English	N/A	N/A	N/A
Spanish	N/A	N/A	N/A
French	N/A	N/A	N/A
French Creole	N/A	N/A	N/A
Italian	N/A	N/A	N/A
Portuguese	N/A	N/A	N/A
German	N/A	N/A	N/A
Yiddish	N/A	N/A	N/A
Other West Germanic	N/A	N/A	N/A
Scandinavian	N/A	N/A	N/A
Greek	N/A	N/A	N/A
Russian	N/A	N/A	N/A
Polish	N/A	N/A	N/A
Serbo-Croatian	N/A	N/A	N/A
Other Slavic	N/A	N/A	N/A
Armenian	N/A	N/A	N/A
Persian	N/A	N/A	N/A
Gujarathi	N/A	N/A	N/A
Hindi	N/A	N/A	N/A
Urdu	N/A	N/A	N/A
Other Indic	N/A	N/A	N/A
Other Indo-European	N/A	N/A	N/A
Chinese	N/A	N/A	N/A
Japanese	N/A	N/A	N/A
Korean	N/A	N/A	N/A
Mon-Khmer, Cambodian	N/A	N/A	N/A
Hmong	N/A	N/A	N/A
Thai	N/A	N/A	N/A
Laotian	N/A	N/A	N/A
Vietnamese	N/A	N/A	N/A
Other Asian	N/A	N/A	N/A
Tagalog	N/A	N/A	N/A
Other Pacific Island	N/A	N/A	N/A
Navajo	N/A	N/A	N/A
Other Native American	N/A	N/A	N/A
Hungarian	N/A	N/A	N/A
Arabic	N/A	N/A	N/A
Hebrew	N/A	N/A	N/A
African	N/A	N/A	N/A
Other and non-specified	N/A	N/A	N/A
Total Non-English	N/A	N/A	N/A

Data Note: Detail may not sum to totals due to rounding. Hispanic population can be of any race.

N/A means not available. **Source:** U.S. Census Bureau, American Community Survey (ACS) 2013 - 2017.

*Population by Language Spoken at Home is available at the census tract summary level and up.

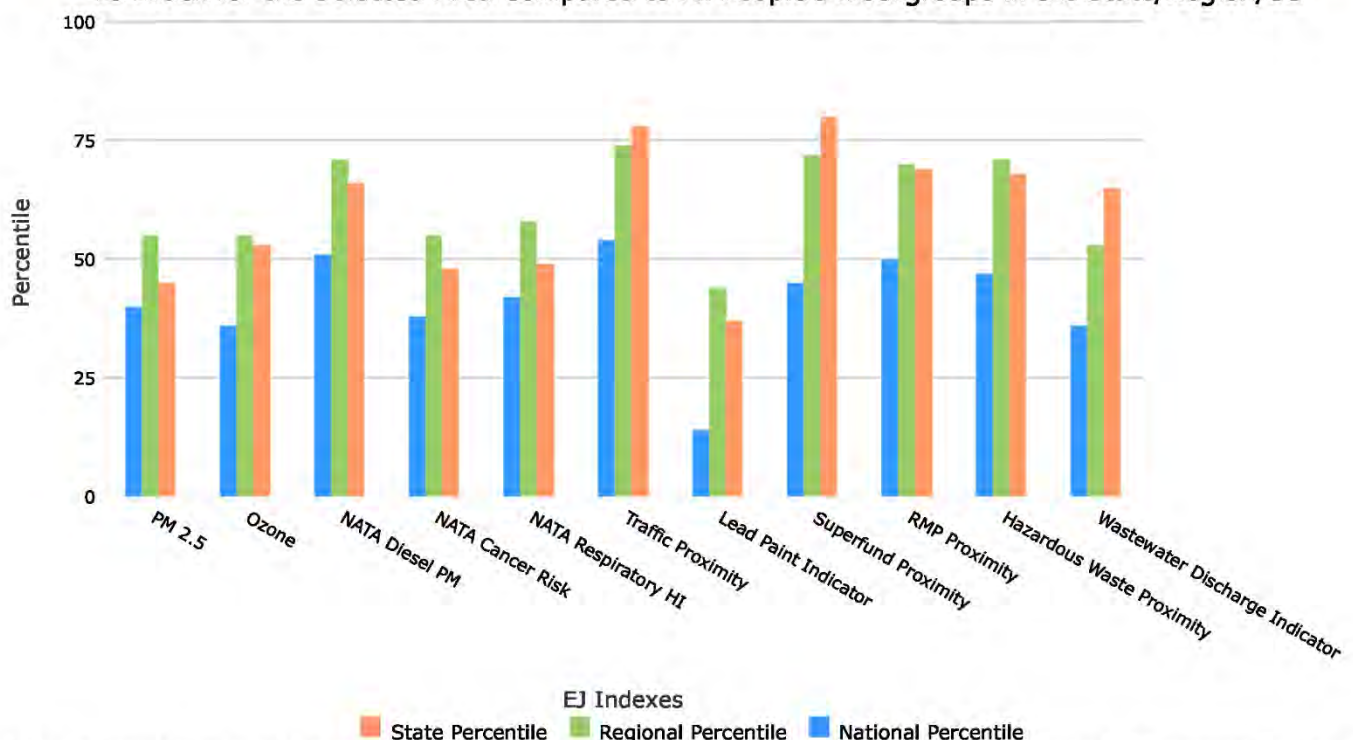
Save as PDF



EJSCREEN Report (Version 2019)
1 miles Ring Centered at 45.014136,-72.977281
VERMONT, EPA Region 1
Approximate Population: 10
Input Area (sq. miles): 3.14
SWB-RIB-001

Selected Variables	Percentile in State	Percentile in EPA Region	Percentile in USA
EJ Indexes			
EJ Index for Particulate Matter (PM 2.5)	45	55	40
EJ Index for Ozone	53	55	36
EJ Index for NATA* Diesel PM	66	71	51
EJ Index for NATA* Air Toxics Cancer Risk	48	55	38
EJ Index for NATA* Respiratory Hazard Index	49	58	42
EJ Index for Traffic Proximity and Volume	78	74	54
EJ Index for Lead Paint Indicator	37	44	14
EJ Index for Superfund Proximity	80	72	45
EJ Index for RMP Proximity	69	70	50
EJ Index for Hazardous Waste Proximity	68	71	47
EJ Index for Wastewater Discharge Indicator	65	53	36

EJ Index for the Selected Area Compared to All People's Blockgroups in the State/Region/US



This report shows the values for environmental and demographic indicators and EJSCREEN indexes. It shows environmental and demographic raw data (e.g., the estimated concentration of ozone in the air), and also shows what percentile each raw data value represents. These percentiles provide perspective on how the selected block group or buffer area compares to the entire state, EPA region, or nation. For example, if a given location is at the 95th percentile nationwide, this means that only 5 percent of the US population has a higher block group value than the average person in the location being analyzed. The years for which the data are available, and the methods used, vary across these indicators. Important caveats and uncertainties apply to this screening-level information, so it is essential to understand the limitations on appropriate interpretations and applications of these indicators. Please see EJSCREEN documentation for discussion of these issues before using reports.

Sites reporting to EPA

Superfund NPL	0
Hazardous Waste Treatment, Storage, and Disposal Facilities (TSDF)	0

Selected Variables	Value	State		EPA Region		USA	
		Avg.	%tile	Avg.	%tile	Avg.	%tile
Environmental Indicators							
Particulate Matter (PM 2.5 in $\mu\text{g}/\text{m}^3$)	5.48	5.06	84	6.34	11	8.3	3
Ozone (ppb)	35.2	36.4	27	41.1	9	43	11
NATA* Diesel PM ($\mu\text{g}/\text{m}^3$)	0.0689	0.103	23	0.344	<50th	0.479	<50th
NATA* Air Toxics Cancer Risk (risk per MM)	20	20	60	25	<50th	32	<50th
NATA* Respiratory Hazard Index	0.23	0.23	57	0.31	<50th	0.44	<50th
Traffic Proximity and Volume (daily traffic count/distance to road)	0.0072	170	20	930	4	750	4
Lead Paint Indicator (% pre-1960s housing)	0.36	0.35	58	0.45	43	0.28	67
Superfund Proximity (site count/km distance)	0.019	0.14	9	0.15	1	0.13	16
RMP Proximity (facility count/km distance)	0.054	0.17	25	0.57	7	0.74	5
Hazardous Waste Proximity (facility count/km distance)	0.084	0.62	35	2.4	8	4	15
Wastewater Discharge Indicator (toxicity-weighted concentration/m distance)	3.2E-07	0.011	22	0.24	24	14	37
Demographic Indicators							
Demographic Index	18%	18%	55	24%	51	36%	25

Minority Population	3%	7%	30	24%	13	39%	7
Low Income Population	33%	28%	65	25%	72	33%	55
Linguistically Isolated Population	1%	1%	76	5%	47	4%	46
Population with Less Than High School Education	11%	8%	76	9%	70	13%	56
Population under Age 5	5%	5%	50	5%	49	6%	36
Population over Age 64	20%	18%	69	16%	74	15%	78

*The National-Scale Air Toxics Assessment (NATA) is EPA's ongoing, comprehensive evaluation of air toxics in the United States. EPA developed the NATA to prioritize air toxics, emission sources, and locations of interest for further study. It is important to remember that NATA provides broad estimates of health risks over geographic areas of the country, not definitive risks to specific individuals or locations. More information on the NATA analysis can be found at: <https://www.epa.gov/national-air-toxics-assessment>.

For additional information, see: www.epa.gov/environmentaljustice (<http://www.epa.gov/environmentaljustice>)

EJSCREEN is a screening tool for pre-decisional use only. It can help identify areas that may warrant additional consideration, analysis, or outreach. It does not provide a basis for decision-making, but it may help identify potential areas of EJ concern. Users should keep in mind that screening tools are subject to substantial uncertainty in their demographic and environmental data, particularly when looking at small geographic areas. Important caveats and uncertainties apply to this screening-level information, so it is essential to understand the limitations on appropriate interpretations and applications of these indicators. Please see EJSCREEN documentation for discussion of these issues before using reports. This screening tool does not provide data on every environmental impact and demographic factor that may be relevant to a particular location. EJSCREEN outputs should be supplemented with additional information and local knowledge before taking any action to address potential EJ concerns.

Location: User-specified point center at [REDACTED]
Ring (buffer): 1-miles radius
Description: TBD

Summary of ACS Estimates		2013 - 2017	
Population			138
Population Density (per sq. mile)			58
Minority Population			32
% Minority			23%
Households			39
Housing Units			50
Housing Units Built Before 1950			13
Per Capita Income			26,201
Land Area (sq. miles) (Source: SF1)			2.37
% Land Area			69%
Water Area (sq. miles) (Source: SF1)			1.07
% Water Area			31%

	2013 - 2017 ACS Estimates	Percent	MOE (±)
Population by Race			
Total	138	100%	497
Population Reporting One Race	108	78%	469
White	107	77%	399
Black	0	0%	9
American Indian	2	1%	34
Asian	0	0%	9
Pacific Islander	0	0%	9
Some Other Race	0	0%	9
Population Reporting Two or More Races	30	22%	331
Total Hispanic Population	0	0%	9
Total Non-Hispanic Population	138		
White Alone	107	77%	399
Black Alone	0	0%	9
American Indian Alone	2	1%	34
Non-Hispanic Asian Alone	0	0%	9
Pacific Islander Alone	0	0%	9
Other Race Alone	0	0%	9
Two or More Races Alone	30	22%	331
Population by Sex			
Male	71	52%	246
Female	67	48%	277
Population by Age			
Age 0-4	2	2%	47
Age 0-17	38	27%	180
Age 18+	101	73%	260
Age 65+	17	12%	121

Data Note: Detail may not sum to totals due to rounding. Hispanic population can be of any race.

N/A means not available. **Source:** U.S. Census Bureau, American Community Survey (ACS) 2013 - 2017

Location: User-specified point center at [REDACTED]

Ring (buffer): 1-miles radius

Description: TBD

	2013 - 2017 ACS Estimates	Percent	MOE (±)
Population 25+ by Educational Attainment			
Total	83	100%	255
Less than 9th Grade	14	17%	90
9th - 12th Grade, No Diploma	3	3%	33
High School Graduate	23	27%	105
Some College, No Degree	34	41%	196
Associate Degree	7	9%	72
Bachelor's Degree or more	10	12%	89
Population Age 5+ Years by Ability to Speak English			
Total	136	100%	491
Speak only English	117	86%	407
Non-English at Home ¹⁺²⁺³⁺⁴	19	14%	137
¹ Speak English "very well"	15	11%	108
² Speak English "well"	4	3%	50
³ Speak English "not well"	0	0%	9
⁴ Speak English "not at all"	0	0%	9
³⁺⁴ Speak English "less than well"	0	0%	9
²⁺³⁺⁴ Speak English "less than very well"	4	3%	50
Linguistically Isolated Households*			
Total	0	0%	9
Speak Spanish	0	0%	9
Speak Other Indo-European Languages	0	0%	9
Speak Asian-Pacific Island Languages	0	0%	9
Speak Other Languages	0	0%	9
Households by Household Income			
Household Income Base	39	100%	92
< \$15,000	2	6%	28
\$15,000 - \$25,000	3	8%	36
\$25,000 - \$50,000	3	8%	34
\$50,000 - \$75,000	6	17%	73
\$75,000 +	24	62%	122
Occupied Housing Units by Tenure			
Total	39	100%	92
Owner Occupied	27	71%	109
Renter Occupied	11	29%	93
Employed Population Age 16+ Years			
Total	102	100%	335
In Labor Force	77	75%	204
Civilian Unemployed in Labor Force	0	0%	9
Not In Labor Force	26	25%	212

Data Note: Detail may not sum to totals due to rounding. Hispanic population can be of anyrace.

N/A means not available. **Source:** U.S. Census Bureau, American Community Survey (ACS)

*Households in which no one 14 and over speaks English "very well" or speaks English only.

EJSCREEN ACS Summary Report



Location: User-specified point center at [REDACTED]

Ring (buffer): 1-miles radius

Description: TBD

	2013 - 2017 ACS Estimates	Percent	MOE (±)
Population by Language Spoken at Home*			
Total (persons age 5 and above)	N/A	N/A	N/A
English	N/A	N/A	N/A
Spanish	N/A	N/A	N/A
French	N/A	N/A	N/A
French Creole	N/A	N/A	N/A
Italian	N/A	N/A	N/A
Portuguese	N/A	N/A	N/A
German	N/A	N/A	N/A
Yiddish	N/A	N/A	N/A
Other West Germanic	N/A	N/A	N/A
Scandinavian	N/A	N/A	N/A
Greek	N/A	N/A	N/A
Russian	N/A	N/A	N/A
Polish	N/A	N/A	N/A
Serbo-Croatian	N/A	N/A	N/A
Other Slavic	N/A	N/A	N/A
Armenian	N/A	N/A	N/A
Persian	N/A	N/A	N/A
Gujarathi	N/A	N/A	N/A
Hindi	N/A	N/A	N/A
Urdu	N/A	N/A	N/A
Other Indic	N/A	N/A	N/A
Other Indo-European	N/A	N/A	N/A
Chinese	N/A	N/A	N/A
Japanese	N/A	N/A	N/A
Korean	N/A	N/A	N/A
Mon-Khmer, Cambodian	N/A	N/A	N/A
Hmong	N/A	N/A	N/A
Thai	N/A	N/A	N/A
Laotian	N/A	N/A	N/A
Vietnamese	N/A	N/A	N/A
Other Asian	N/A	N/A	N/A
Tagalog	N/A	N/A	N/A
Other Pacific Island	N/A	N/A	N/A
Navajo	N/A	N/A	N/A
Other Native American	N/A	N/A	N/A
Hungarian	N/A	N/A	N/A
Arabic	N/A	N/A	N/A
Hebrew	N/A	N/A	N/A
African	N/A	N/A	N/A
Other and non-specified	N/A	N/A	N/A
Total Non-English	N/A	N/A	N/A

Data Note: Detail may not sum to totals due to rounding. Hispanic population can be of any race.

N/A means not available. **Source:** U.S. Census Bureau, American Community Survey (ACS) 2013 - 2017.

*Population by Language Spoken at Home is available at the census tract summary level and up.

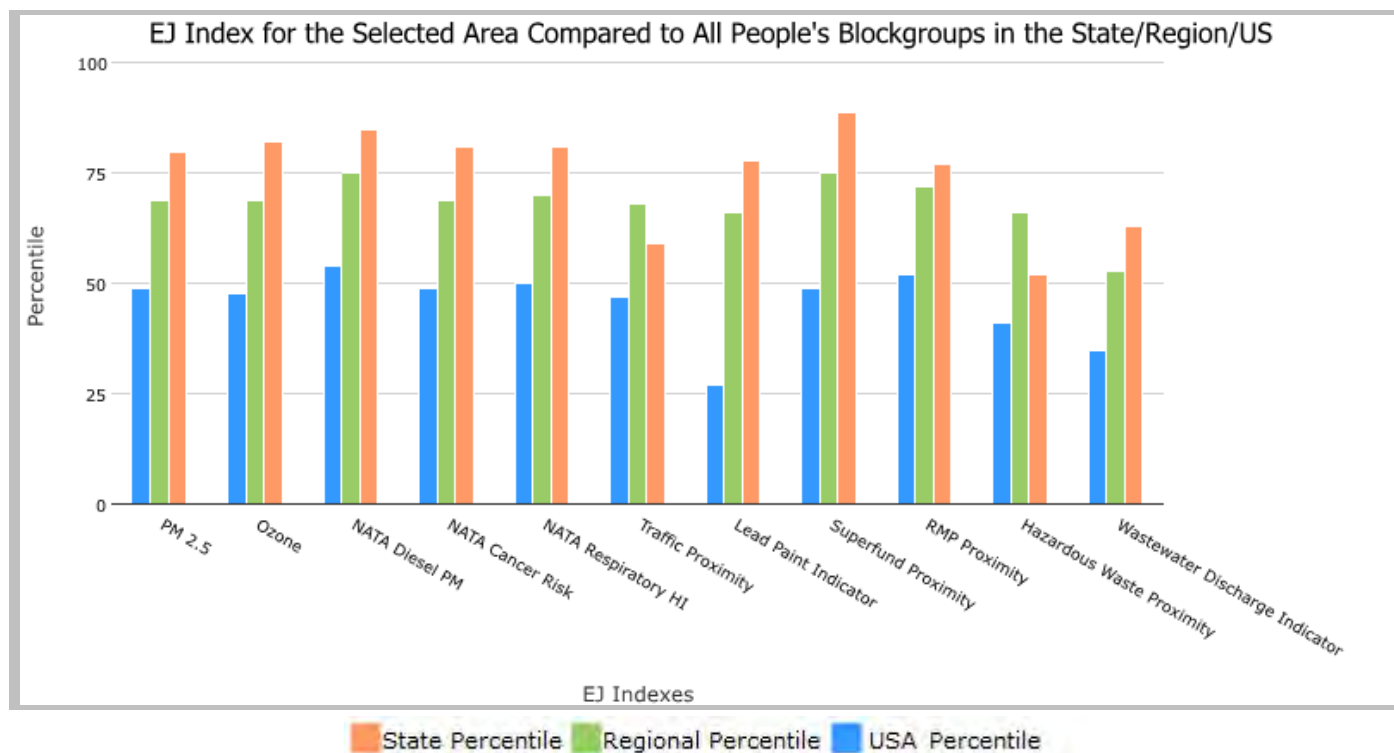
1 miles Ring Centered at [REDACTED], VERMONT, EPA Region 1

Approximate Population: 138

Input Area (sq. miles): 3.14

TBD

Selected Variables	State Percentile	EPA Region Percentile	USA Percentile
EJ Indexes			
EJ Index for PM2.5	80	69	49
EJ Index for Ozone	82	69	48
EJ Index for NATA* Diesel PM	85	75	54
EJ Index for NATA* Air Toxics Cancer Risk	81	69	49
EJ Index for NATA* Respiratory Hazard Index	81	70	50
EJ Index for Traffic Proximity and Volume	59	68	47
EJ Index for Lead Paint Indicator	78	66	27
EJ Index for Superfund Proximity	89	75	49
EJ Index for RMP Proximity	77	72	52
EJ Index for Hazardous Waste Proximity	52	66	41
EJ Index for Wastewater Discharge Indicator	63	53	35



This report shows the values for environmental and demographic indicators and EJSCREEN indexes. It shows environmental and demographic raw data (e.g., the estimated concentration of ozone in the air), and also shows what percentile each raw data value represents. These percentiles provide perspective on how the selected block group or buffer area compares to the entire state, EPA region, or nation. For example, if a given location is at the 95th percentile nationwide, this means that only 5 percent of the US population has a higher block group value than the average person in the location being analyzed. The years for which the data are available, and the methods used, vary across these indicators. Important caveats and uncertainties apply to this screening-level information, so it is essential to understand the limitations on appropriate interpretations and applications of these indicators. Please see EJSCREEN documentation for discussion of these issues before using reports.

EJSCREEN Report (Version 2019)



1 miles Ring Centered at [REDACTED], VERMONT, EPA Region 1

Approximate Population: 138

Input Area (sq. miles): 3.14

TBD



Sites reporting to EPA	
Superfund NPL	0
Hazardous Waste Treatment, Storage, and Disposal Facilities (TSDF)	0

EJSCREEN Report (Version 2019)



1 miles Ring Centered at [REDACTED], VERMONT, EPA Region 1

Approximate Population: 138

Input Area (sq. miles): 3.14

TBD

Selected Variables	Value	State Avg.	%ile in State	EPA Region Avg.	%ile in EPA Region	USA Avg.	%ile in USA
Environmental Indicators							
Particulate Matter (PM 2.5 in $\mu\text{g}/\text{m}^3$)	5.48	5.06	84	6.34	11	8.3	3
Ozone (ppb)	35.2	36.4	27	41.1	9	43	11
NATA* Diesel PM ($\mu\text{g}/\text{m}^3$)	0.0689	0.103	23	0.344	<50th	0.479	<50th
NATA* Cancer Risk (lifetime risk per million)	20	20	60	25	<50th	32	<50th
NATA* Respiratory Hazard Index	0.23	0.23	57	0.31	<50th	0.44	<50th
Traffic Proximity and Volume (daily traffic count/distance to road)	20	170	41	930	13	750	15
Lead Paint Indicator (% Pre-1960 Housing)	0.31	0.35	47	0.45	36	0.28	63
Superfund Proximity (site count/km distance)	0.023	0.14	17	0.15	2	0.13	20
RMP Proximity (facility count/km distance)	0.069	0.17	38	0.57	13	0.74	8
Hazardous Waste Proximity (facility count/km distance)	0.24	0.62	63	2.4	29	4	39
Wastewater Discharge Indicator (toxicity-weighted concentration/m distance)	6.6E-07	0.011	35	0.24	30	14	41
Demographic Indicators							
Demographic Index	28%	18%	87	24%	71	36%	46
Minority Population	23%	7%	96	24%	65	39%	41
Low Income Population	33%	28%	66	25%	73	33%	56
Linguistically Isolated Population	0%	1%	73	5%	46	4%	45
Population With Less Than High School Education	20%	8%	97	9%	87	13%	78
Population Under 5 years of age	2%	5%	11	5%	15	6%	10
Population over 64 years of age	12%	18%	20	16%	33	15%	42

* The National-Scale Air Toxics Assessment (NATA) is EPA's ongoing, comprehensive evaluation of air toxics in the United States. EPA developed the NATA to prioritize air toxics, emission sources, and locations of interest for further study. It is important to remember that NATA provides broad estimates of health risks over geographic areas of the country, not definitive risks to specific individuals or locations. More information on the NATA analysis can be found at: <https://www.epa.gov/national-air-toxics-assessment>.

For additional information, see: www.epa.gov/environmentaljustice

EJSCREEN is a screening tool for pre-decisional use only. It can help identify areas that may warrant additional consideration, analysis, or outreach. It does not provide a basis for decision-making, but it may help identify potential areas of EJ concern. Users should keep in mind that screening tools are subject to substantial uncertainty in their demographic and environmental data, particularly when looking at small geographic areas. Important caveats and uncertainties apply to this screening-level information, so it is essential to understand the limitations on appropriate interpretations and applications of these indicators. Please see EJSCREEN documentation for discussion of these issues before using reports. This screening tool does not provide data on every environmental impact and demographic factor that may be relevant to a particular location. EJSCREEN outputs should be supplemented with additional information and local knowledge before taking any action to address potential EJ concerns.

Location: User-specified point center at [REDACTED]

Ring (buffer): 1-miles radius

Description: SWB-NVB-001

Summary of ACS Estimates		2013 - 2017	
Population		117	
Population Density (per sq. mile)		52	
Minority Population		9	
% Minority		8%	
Households		73	
Housing Units		82	
Housing Units Built Before 1950		22	
Per Capita Income		28,202	
Land Area (sq. miles) (Source: SF1)		2.25	
% Land Area		97%	
Water Area (sq. miles) (Source: SF1)		0.06	
% Water Area		3%	

	2013 - 2017 ACS Estimates	Percent	MOE (±)
Population by Race			
Total	117	100%	202
Population Reporting One Race	117	100%	284
White	108	92%	201
Black	0	0%	9
American Indian	0	0%	9
Asian	0	0%	9
Pacific Islander	0	0%	9
Some Other Race	9	8%	47
Population Reporting Two or More Races	0	0%	23
Total Hispanic Population	4	3%	35
Total Non-Hispanic Population	114		
White Alone	108	92%	201
Black Alone	0	0%	9
American Indian Alone	0	0%	9
Non-Hispanic Asian Alone	0	0%	9
Pacific Islander Alone	0	0%	9
Other Race Alone	5	4%	34
Two or More Races Alone	0	0%	23
Population by Sex			
Male	62	53%	119
Female	55	47%	115
Population by Age			
Age 0-4	0	0%	24
Age 0-17	9	8%	57
Age 18+	108	92%	155
Age 65+	42	35%	80

Data Note: Detail may not sum to totals due to rounding. Hispanic population can be of any race.

N/A means not available. **Source:** U.S. Census Bureau, American Community Survey (ACS) 2013 - 2017

Location: User-specified point center at [REDACTED]

Ring (buffer): 1-miles radius

Description: SWB-NVB-001

	2013 - 2017 ACS Estimates	Percent	MOE (±)
Population 25+ by Educational Attainment			
Total	103	100%	147
Less than 9th Grade	4	4%	16
9th - 12th Grade, No Diploma	10	10%	38
High School Graduate	49	47%	106
Some College, No Degree	19	19%	83
Associate Degree	5	5%	44
Bachelor's Degree or more	21	21%	71
Population Age 5+ Years by Ability to Speak English			
Total	117	100%	197
Speak only English	112	95%	173
Non-English at Home ¹⁺²⁺³⁺⁴	5	5%	28
¹ Speak English "very well"	5	4%	27
² Speak English "well"	0	0%	11
³ Speak English "not well"	0	0%	9
⁴ Speak English "not at all"	0	0%	9
³⁺⁴ Speak English "less than well"	0	0%	9
²⁺³⁺⁴ Speak English "less than very well"	0	0%	11
Linguistically Isolated Households*			
Total	0	0%	9
Speak Spanish	0	0%	9
Speak Other Indo-European Languages	0	0%	9
Speak Asian-Pacific Island Languages	0	0%	9
Speak Other Languages	0	0%	9
Households by Household Income			
Household Income Base	73	100%	91
< \$15,000	14	19%	38
\$15,000 - \$25,000	8	11%	41
\$25,000 - \$50,000	23	31%	80
\$50,000 - \$75,000	14	19%	57
\$75,000 +	15	20%	49
Occupied Housing Units by Tenure			
Total	73	100%	91
Owner Occupied	56	76%	77
Renter Occupied	17	24%	49
Employed Population Age 16+ Years			
Total	111	100%	170
In Labor Force	41	37%	118
Civilian Unemployed in Labor Force	0	0%	15
Not In Labor Force	69	63%	118

Data Note: Detail may not sum to totals due to rounding. Hispanic population can be of anyrace.

N/A means not available. **Source:** U.S. Census Bureau, American Community Survey (ACS)

*Households in which no one 14 and over speaks English "very well" or speaks English only.

EJSCREEN ACS Summary Report



Location: User-specified point center at [REDACTED]

Ring (buffer): 1-miles radius

Description: SWB-NVB-001

	2013 - 2017 ACS Estimates	Percent	MOE (±)
Population by Language Spoken at Home*			
Total (persons age 5 and above)	N/A	N/A	N/A
English	N/A	N/A	N/A
Spanish	N/A	N/A	N/A
French	N/A	N/A	N/A
French Creole	N/A	N/A	N/A
Italian	N/A	N/A	N/A
Portuguese	N/A	N/A	N/A
German	N/A	N/A	N/A
Yiddish	N/A	N/A	N/A
Other West Germanic	N/A	N/A	N/A
Scandinavian	N/A	N/A	N/A
Greek	N/A	N/A	N/A
Russian	N/A	N/A	N/A
Polish	N/A	N/A	N/A
Serbo-Croatian	N/A	N/A	N/A
Other Slavic	N/A	N/A	N/A
Armenian	N/A	N/A	N/A
Persian	N/A	N/A	N/A
Gujarathi	N/A	N/A	N/A
Hindi	N/A	N/A	N/A
Urdu	N/A	N/A	N/A
Other Indic	N/A	N/A	N/A
Other Indo-European	N/A	N/A	N/A
Chinese	N/A	N/A	N/A
Japanese	N/A	N/A	N/A
Korean	N/A	N/A	N/A
Mon-Khmer, Cambodian	N/A	N/A	N/A
Hmong	N/A	N/A	N/A
Thai	N/A	N/A	N/A
Laotian	N/A	N/A	N/A
Vietnamese	N/A	N/A	N/A
Other Asian	N/A	N/A	N/A
Tagalog	N/A	N/A	N/A
Other Pacific Island	N/A	N/A	N/A
Navajo	N/A	N/A	N/A
Other Native American	N/A	N/A	N/A
Hungarian	N/A	N/A	N/A
Arabic	N/A	N/A	N/A
Hebrew	N/A	N/A	N/A
African	N/A	N/A	N/A
Other and non-specified	N/A	N/A	N/A
Total Non-English	N/A	N/A	N/A

Data Note: Detail may not sum to totals due to rounding. Hispanic population can be of any race.

N/A means not available. **Source:** U.S. Census Bureau, American Community Survey (ACS) 2013 - 2017.

*Population by Language Spoken at Home is available at the census tract summary level and up.

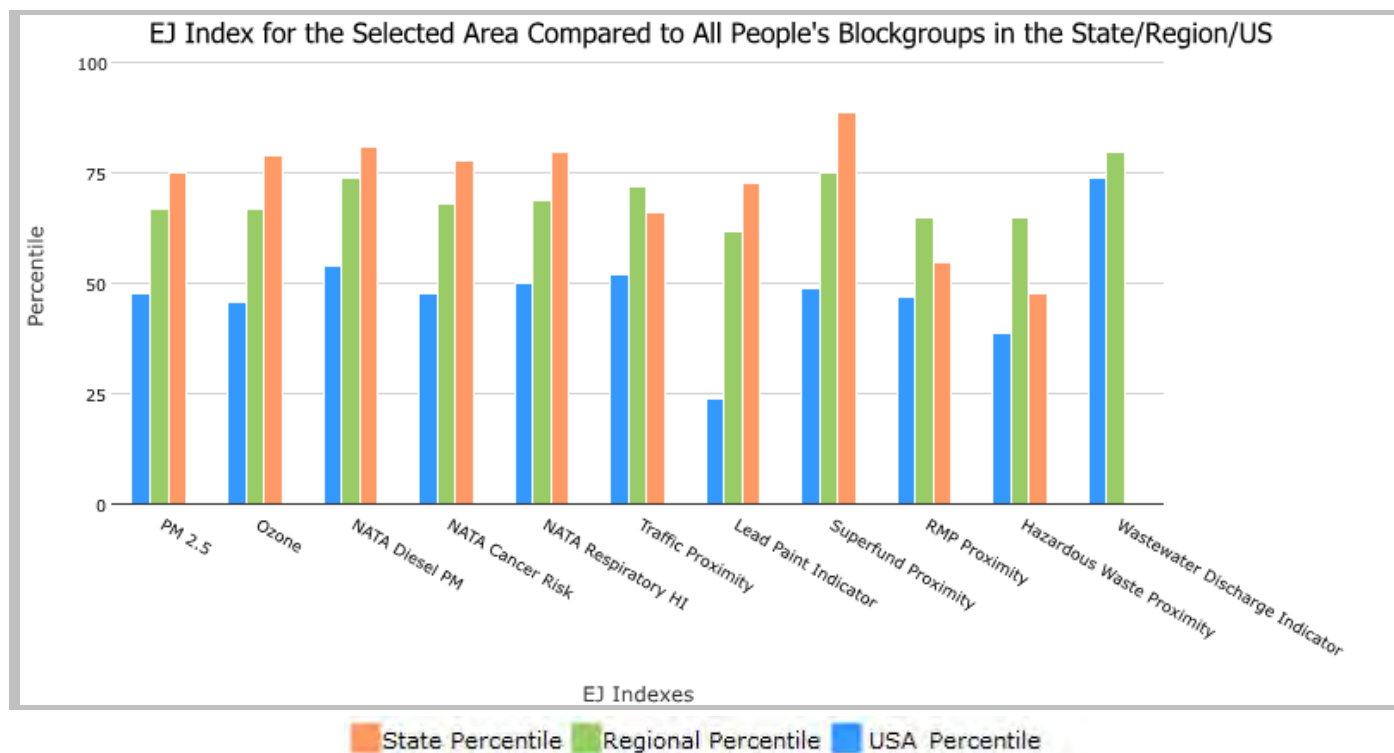
1 miles Ring Centered at [REDACTED], VERMONT, EPA Region 1

Approximate Population: 117

Input Area (sq. miles): 3.14

SWB-NVB-001

Selected Variables	State Percentile	EPA Region Percentile	USA Percentile
EJ Indexes			
EJ Index for PM2.5	75	67	48
EJ Index for Ozone	79	67	46
EJ Index for NATA* Diesel PM	81	74	54
EJ Index for NATA* Air Toxics Cancer Risk	78	68	48
EJ Index for NATA* Respiratory Hazard Index	80	69	50
EJ Index for Traffic Proximity and Volume	66	72	52
EJ Index for Lead Paint Indicator	73	62	24
EJ Index for Superfund Proximity	89	75	49
EJ Index for RMP Proximity	55	65	47
EJ Index for Hazardous Waste Proximity	48	65	39
EJ Index for Wastewater Discharge Indicator	N/A	80	74



This report shows the values for environmental and demographic indicators and EJSCREEN indexes. It shows environmental and demographic raw data (e.g., the estimated concentration of ozone in the air), and also shows what percentile each raw data value represents. These percentiles provide perspective on how the selected block group or buffer area compares to the entire state, EPA region, or nation. For example, if a given location is at the 95th percentile nationwide, this means that only 5 percent of the US population has a higher block group value than the average person in the location being analyzed. The years for which the data are available, and the methods used, vary across these indicators. Important caveats and uncertainties apply to this screening-level information, so it is essential to understand the limitations on appropriate interpretations and applications of these indicators. Please see EJSCREEN documentation for discussion of these issues before using reports.

EJSCREEN Report (Version 2019)



1 miles Ring Centered at [REDACTED] VERMONT, EPA Region 1

Approximate Population: 117

Input Area (sq. miles): 3.14

SWB-NVB-001



Sites reporting to EPA	
Superfund NPL	0
Hazardous Waste Treatment, Storage, and Disposal Facilities (TSDF)	0

EJSCREEN Report (Version 2019)



1 miles Ring Centered at [REDACTED] VERMONT, EPA Region 1

Approximate Population: 117

Input Area (sq. miles): 3.14

SWB-NVB-001

Selected Variables	Value	State Avg.	%ile in State	EPA Region Avg.	%ile in EPA Region	USA Avg.	%ile in USA
Environmental Indicators							
Particulate Matter (PM 2.5 in $\mu\text{g}/\text{m}^3$)	5.3	5.06	70	6.34	7	8.3	2
Ozone (ppb)	34.3	36.4	4	41.1	5	43	9
NATA* Diesel PM ($\mu\text{g}/\text{m}^3$)	0.0695	0.103	24	0.344	<50th	0.479	<50th
NATA* Cancer Risk (lifetime risk per million)	19	20	37	25	<50th	32	<50th
NATA* Respiratory Hazard Index	0.21	0.23	33	0.31	<50th	0.44	<50th
Traffic Proximity and Volume (daily traffic count/distance to road)	2.1	170	29	930	6	750	7
Lead Paint Indicator (% Pre-1960 Housing)	0.32	0.35	52	0.45	38	0.28	64
Superfund Proximity (site count/km distance)	0.02	0.14	10	0.15	1	0.13	17
RMP Proximity (facility count/km distance)	0.12	0.17	71	0.57	26	0.74	20
Hazardous Waste Proximity (facility count/km distance)	0.24	0.62	62	2.4	28	4	39
Wastewater Discharge Indicator (toxicity-weighted concentration/m distance)	0	0.011	N/A	0.24	24	14	37
Demographic Indicators							
Demographic Index	18%	18%	56	24%	51	36%	25
Minority Population	8%	7%	69	24%	33	39%	18
Low Income Population	28%	28%	50	25%	65	33%	46
Linguistically Isolated Population	0%	1%	73	5%	46	4%	45
Population With Less Than High School Education	13%	8%	85	9%	76	13%	63
Population Under 5 years of age	0%	5%	4	5%	6	6%	4
Population over 64 years of age	35%	18%	98	16%	97	15%	97

* The National-Scale Air Toxics Assessment (NATA) is EPA's ongoing, comprehensive evaluation of air toxics in the United States. EPA developed the NATA to prioritize air toxics, emission sources, and locations of interest for further study. It is important to remember that NATA provides broad estimates of health risks over geographic areas of the country, not definitive risks to specific individuals or locations. More information on the NATA analysis can be found at: <https://www.epa.gov/national-air-toxics-assessment>.

For additional information, see: www.epa.gov/environmentaljustice

EJSCREEN is a screening tool for pre-decisional use only. It can help identify areas that may warrant additional consideration, analysis, or outreach. It does not provide a basis for decision-making, but it may help identify potential areas of EJ concern. Users should keep in mind that screening tools are subject to substantial uncertainty in their demographic and environmental data, particularly when looking at small geographic areas. Important caveats and uncertainties apply to this screening-level information, so it is essential to understand the limitations on appropriate interpretations and applications of these indicators. Please see EJSCREEN documentation for discussion of these issues before using reports. This screening tool does not provide data on every environmental impact and demographic factor that may be relevant to a particular location. EJSCREEN outputs should be supplemented with additional information and local knowledge before taking any action to address potential EJ concerns.

Location: User-specified point center at
Ring (buffer): 1-miles radius
Description: SWB-NVB-002

Summary of ACS Estimates		2013 - 2017
Population		760
Population Density (per sq. mile)		416
Minority Population		26
% Minority		3%
Households		388
Housing Units		451
Housing Units Built Before 1950		189
Per Capita Income		28,202
Land Area (sq. miles) (Source: SF1)		1.83
% Land Area		98%
Water Area (sq. miles) (Source: SF1)		0.04
% Water Area		2%

	2013 - 2017 ACS Estimates	Percent	MOE (±)
Population by Race			
Total	760	100%	202
Population Reporting One Race	742	98%	284
White	734	97%	201
Black	0	0%	9
American Indian	0	0%	9
Asian	3	0%	9
Pacific Islander	0	0%	9
Some Other Race	5	1%	47
Population Reporting Two or More Races	18	2%	23
Total Hispanic Population	2	0%	35
Total Non-Hispanic Population	758		
White Alone	734	97%	201
Black Alone	0	0%	9
American Indian Alone	0	0%	9
Non-Hispanic Asian Alone	3	0%	9
Pacific Islander Alone	0	0%	9
Other Race Alone	3	0%	34
Two or More Races Alone	18	2%	23
Population by Sex			
Male	355	47%	119
Female	406	53%	115
Population by Age			
Age 0-4	23	3%	24
Age 0-17	150	20%	57
Age 18+	611	80%	155
Age 65+	152	20%	80

Data Note: Detail may not sum to totals due to rounding. Hispanic population can be of any race.

N/A means not available. **Source:** U.S. Census Bureau, American Community Survey (ACS) 2013 - 2017

EJSCREEN ACS Summary Report



Location: User-specified point center at [REDACTED]

Ring (buffer): 1-miles radius

Description: SWB-NVB-002

	2013 - 2017 ACS Estimates	Percent	MOE (±)
Population 25+ by Educational Attainment			
Total	551	100%	147
Less than 9th Grade	7	1%	16
9th - 12th Grade, No Diploma	28	5%	38
High School Graduate	173	31%	106
Some College, No Degree	177	32%	83
Associate Degree	51	9%	44
Bachelor's Degree or more	167	30%	71
Population Age 5+ Years by Ability to Speak English			
Total	737	100%	197
Speak only English	705	96%	173
Non-English at Home ¹⁺²⁺³⁺⁴	32	4%	28
¹ Speak English "very well"	29	4%	27
² Speak English "well"	4	0%	11
³ Speak English "not well"	0	0%	9
⁴ Speak English "not at all"	0	0%	9
³⁺⁴ Speak English "less than well"	0	0%	9
²⁺³⁺⁴ Speak English "less than very well"	4	0%	11
Linguistically Isolated Households*			
Total	0	0%	9
Speak Spanish	0	0%	9
Speak Other Indo-European Languages	0	0%	9
Speak Asian-Pacific Island Languages	0	0%	9
Speak Other Languages	0	0%	9
Households by Household Income			
Household Income Base	388	100%	91
< \$15,000	44	11%	38
\$15,000 - \$25,000	45	12%	41
\$25,000 - \$50,000	90	23%	80
\$50,000 - \$75,000	85	22%	57
\$75,000 +	123	32%	49
Occupied Housing Units by Tenure			
Total	388	100%	91
Owner Occupied	278	72%	77
Renter Occupied	110	28%	49
Employed Population Age 16+ Years			
Total	637	100%	170
In Labor Force	405	64%	118
Civilian Unemployed in Labor Force	8	1%	15
Not In Labor Force	232	36%	118

Data Note: Detail may not sum to totals due to rounding. Hispanic population can be of anyrace.

N/A means not available. **Source:** U.S. Census Bureau, American Community Survey (ACS)

*Households in which no one 14 and over speaks English "very well" or speaks English only.

EJSCREEN ACS Summary Report



Location: User-specified point center at [REDACTED]

Ring (buffer): 1-miles radius

Description: SWB-NVB-002

	2013 - 2017 ACS Estimates	Percent	MOE (±)
Population by Language Spoken at Home*			
Total (persons age 5 and above)	N/A	N/A	N/A
English	N/A	N/A	N/A
Spanish	N/A	N/A	N/A
French	N/A	N/A	N/A
French Creole	N/A	N/A	N/A
Italian	N/A	N/A	N/A
Portuguese	N/A	N/A	N/A
German	N/A	N/A	N/A
Yiddish	N/A	N/A	N/A
Other West Germanic	N/A	N/A	N/A
Scandinavian	N/A	N/A	N/A
Greek	N/A	N/A	N/A
Russian	N/A	N/A	N/A
Polish	N/A	N/A	N/A
Serbo-Croatian	N/A	N/A	N/A
Other Slavic	N/A	N/A	N/A
Armenian	N/A	N/A	N/A
Persian	N/A	N/A	N/A
Gujarathi	N/A	N/A	N/A
Hindi	N/A	N/A	N/A
Urdu	N/A	N/A	N/A
Other Indic	N/A	N/A	N/A
Other Indo-European	N/A	N/A	N/A
Chinese	N/A	N/A	N/A
Japanese	N/A	N/A	N/A
Korean	N/A	N/A	N/A
Mon-Khmer, Cambodian	N/A	N/A	N/A
Hmong	N/A	N/A	N/A
Thai	N/A	N/A	N/A
Laotian	N/A	N/A	N/A
Vietnamese	N/A	N/A	N/A
Other Asian	N/A	N/A	N/A
Tagalog	N/A	N/A	N/A
Other Pacific Island	N/A	N/A	N/A
Navajo	N/A	N/A	N/A
Other Native American	N/A	N/A	N/A
Hungarian	N/A	N/A	N/A
Arabic	N/A	N/A	N/A
Hebrew	N/A	N/A	N/A
African	N/A	N/A	N/A
Other and non-specified	N/A	N/A	N/A
Total Non-English	N/A	N/A	N/A

Data Note: Detail may not sum to totals due to rounding. Hispanic population can be of any race.

N/A means not available. **Source:** U.S. Census Bureau, American Community Survey (ACS) 2013 - 2017.

*Population by Language Spoken at Home is available at the census tract summary level and up.

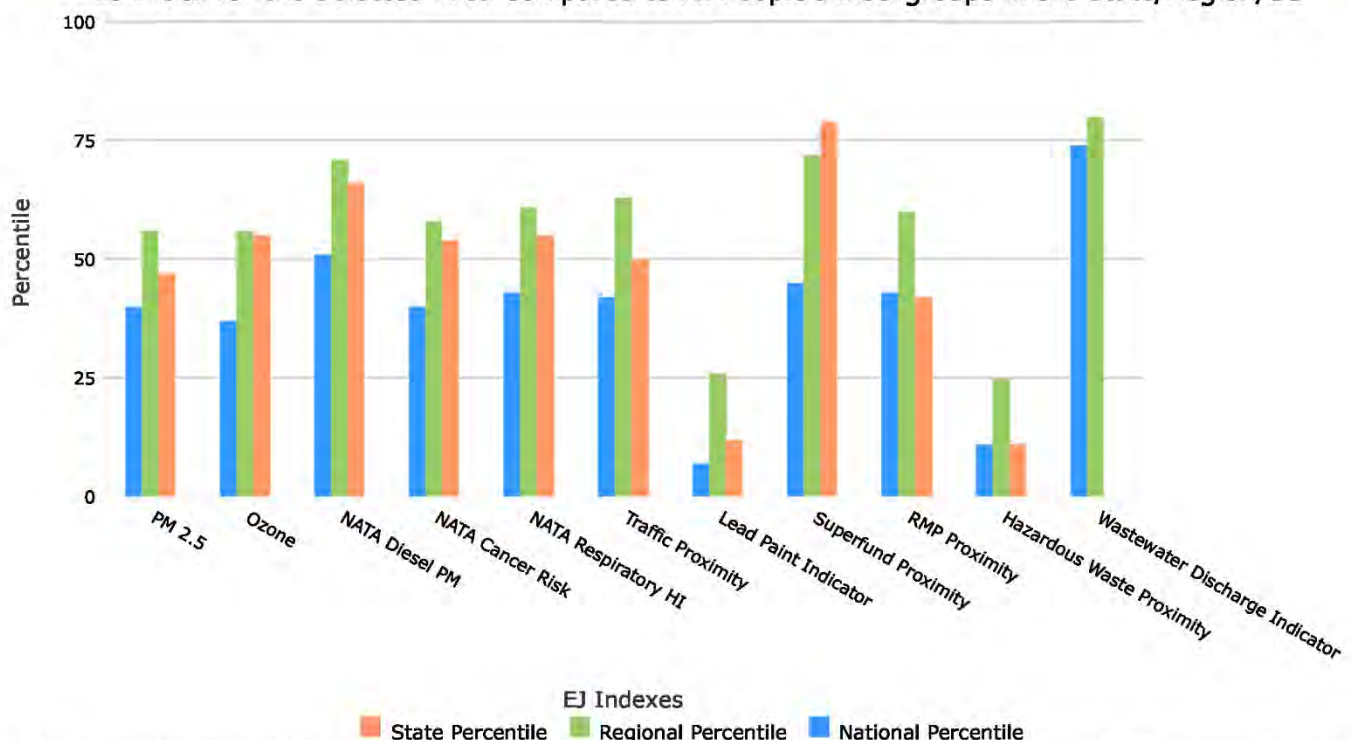
Save as PDF



EJSCREEN Report (Version 2019)
1 miles Ring Centered at 45.004142,-72.089661
VERMONT, EPA Region 1
Approximate Population: 760
Input Area (sq. miles): 3.14
SWB-NVB-002

Selected Variables	Percentile in State	Percentile in EPA Region	Percentile in USA
EJ Indexes			
EJ Index for Particulate Matter (PM 2.5)	47	56	40
EJ Index for Ozone	55	56	37
EJ Index for NATA* Diesel PM	66	71	51
EJ Index for NATA* Air Toxics Cancer Risk	54	58	40
EJ Index for NATA* Respiratory Hazard Index	55	61	43
EJ Index for Traffic Proximity and Volume	50	63	42
EJ Index for Lead Paint Indicator	12	26	7
EJ Index for Superfund Proximity	79	72	45
EJ Index for RMP Proximity	42	60	43
EJ Index for Hazardous Waste Proximity	11	25	11
EJ Index for Wastewater Discharge Indicator	N/A	80	74

EJ Index for the Selected Area Compared to All People's Blockgroups in the State/Region/US



This report shows the values for environmental and demographic indicators and EJSCREEN indexes. It shows environmental and demographic raw data (e.g., the estimated concentration of ozone in the air), and also shows what percentile each raw data value represents. These percentiles provide perspective on how the selected block group or buffer area compares to the entire state, EPA region, or nation. For example, if a given location is at the 95th percentile nationwide, this means that only 5 percent of the US population has a higher block group value than the average person in the location being analyzed. The years for which the data are available, and the methods used, vary across these indicators. Important caveats and uncertainties apply to this screening-level information, so it is essential to understand the limitations on appropriate interpretations and applications of these indicators. Please see EJSCREEN documentation for discussion of these issues before using reports.

Sites reporting to EPA	
Superfund NPL	0
Hazardous Waste Treatment, Storage, and Disposal Facilities (TSDF)	1

Selected Variables	Value	State		EPA Region		USA	
		Avg.	%tile	Avg.	%tile	Avg.	%tile
Environmental Indicators							
Particulate Matter (PM 2.5 in $\mu\text{g}/\text{m}^3$)	5.3	5.06	70	6.34	7	8.3	2
Ozone (ppb)	34.3	36.4	4	41.1	5	43	9
NATA* Diesel PM ($\mu\text{g}/\text{m}^3$)	0.0695	0.103	24	0.344	<50th	0.479	<50th
NATA* Air Toxics Cancer Risk (risk per MM)	19	20	37	25	<50th	32	<50th
NATA* Respiratory Hazard Index	0.21	0.23	33	0.31	<50th	0.44	<50th
Traffic Proximity and Volume (daily traffic count/distance to road)	27	170	45	930	15	750	18
Lead Paint Indicator (% pre-1960s housing)	0.59	0.35	83	0.45	67	0.28	82
Superfund Proximity (site count/km distance)	0.019	0.14	8	0.15	1	0.13	16
RMP Proximity (facility count/km distance)	0.1	0.17	67	0.57	22	0.74	16
Hazardous Waste Proximity (facility count/km distance)	1.4	0.62	85	2.4	60	4	70
Wastewater Discharge Indicator (toxicity-weighted concentration/m distance)	0	0.011	N/A	0.24	24	14	37
Demographic Indicators							
Demographic Index	14%	18%	38	24%	39	36%	17

Minority Population	3%	7%	35	24%	14	39%	8
Low Income Population	25%	28%	43	25%	60	33%	42
Linguistically Isolated Population	0%	1%	73	5%	46	4%	45
Population with Less Than High School Education	6%	8%	43	9%	47	13%	35
Population under Age 5	3%	5%	25	5%	28	6%	20
Population over Age 64	20%	18%	67	16%	73	15%	77

*The National-Scale Air Toxics Assessment (NATA) is EPA's ongoing, comprehensive evaluation of air toxics in the United States. EPA developed the NATA to prioritize air toxics, emission sources, and locations of interest for further study. It is important to remember that NATA provides broad estimates of health risks over geographic areas of the country, not definitive risks to specific individuals or locations. More information on the NATA analysis can be found at: <https://www.epa.gov/national-air-toxics-assessment>.

For additional information, see: www.epa.gov/environmentaljustice (<http://www.epa.gov/environmentaljustice>)

EJSCREEN is a screening tool for pre-decisional use only. It can help identify areas that may warrant additional consideration, analysis, or outreach. It does not provide a basis for decision-making, but it may help identify potential areas of EJ concern. Users should keep in mind that screening tools are subject to substantial uncertainty in their demographic and environmental data, particularly when looking at small geographic areas. Important caveats and uncertainties apply to this screening-level information, so it is essential to understand the limitations on appropriate interpretations and applications of these indicators. Please see EJSCREEN documentation for discussion of these issues before using reports. This screening tool does not provide data on every environmental impact and demographic factor that may be relevant to a particular location. EJSCREEN outputs should be supplemented with additional information and local knowledge before taking any action to address potential EJ concerns.

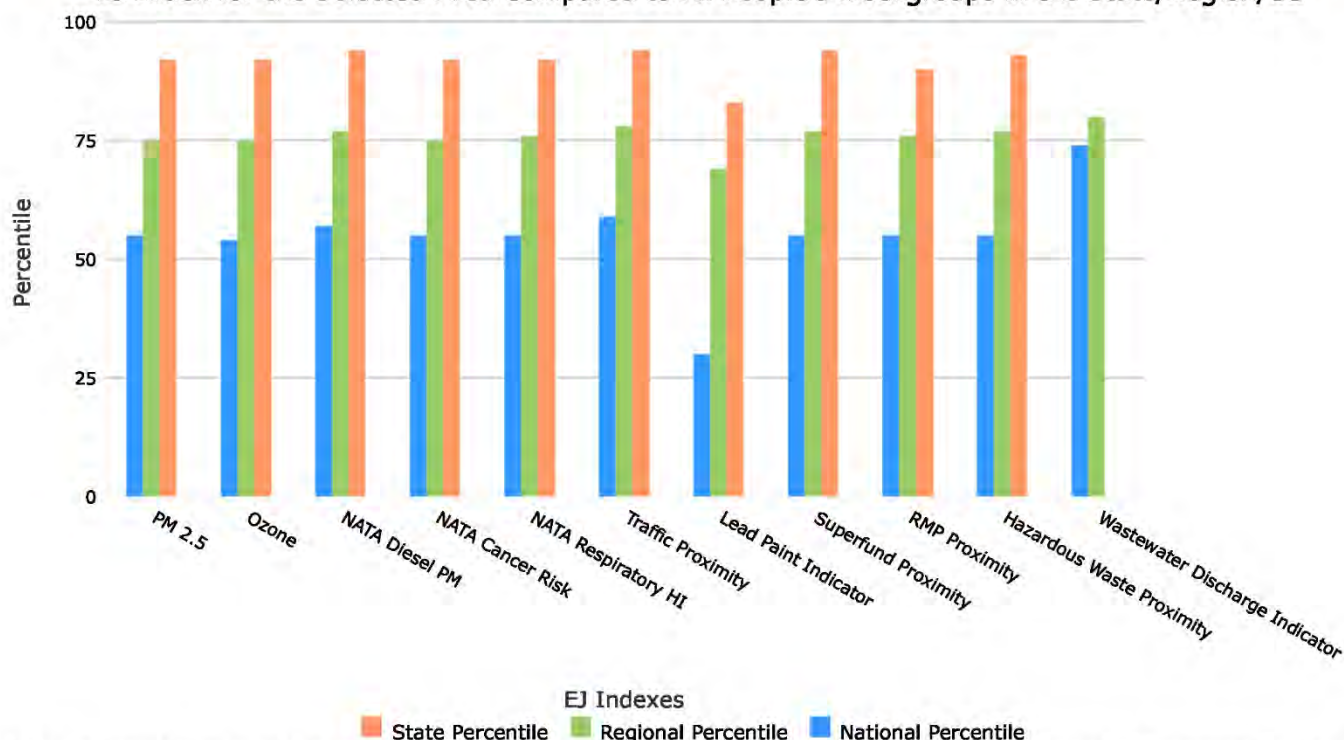
Save as PDF



EJSCREEN Report (Version 2019)
1 miles Ring Centered at 45.006981,-72.415823
VERMONT, EPA Region 1
Approximate Population: 262
Input Area (sq. miles): 3.14
SWB-NVB-003

Selected Variables	Percentile in State	Percentile in EPA Region	Percentile in USA
EJ Indexes			
EJ Index for Particulate Matter (PM 2.5)	92	75	55
EJ Index for Ozone	92	75	54
EJ Index for NATA* Diesel PM	94	77	57
EJ Index for NATA* Air Toxics Cancer Risk	92	75	55
EJ Index for NATA* Respiratory Hazard Index	92	76	55
EJ Index for Traffic Proximity and Volume	94	78	59
EJ Index for Lead Paint Indicator	83	69	30
EJ Index for Superfund Proximity	94	77	55
EJ Index for RMP Proximity	90	76	55
EJ Index for Hazardous Waste Proximity	93	77	55
EJ Index for Wastewater Discharge Indicator	N/A	80	74

EJ Index for the Selected Area Compared to All People's Blockgroups in the State/Region/US



This report shows the values for environmental and demographic indicators and EJSCREEN indexes. It shows environmental and demographic raw data (e.g., the estimated concentration of ozone in the air), and also shows what percentile each raw data value represents. These percentiles provide perspective on how the selected block group or buffer area compares to the entire state, EPA region, or nation. For example, if a given location is at the 95th percentile nationwide, this means that only 5 percent of the US population has a higher block group value than the average person in the location being analyzed. The years for which the data are available, and the methods used, vary across these indicators. Important caveats and uncertainties apply to this screening-level information, so it is essential to understand the limitations on appropriate interpretations and applications of these indicators. Please see EJSCREEN documentation for discussion of these issues before using reports.

Sites reporting to EPA	
Superfund NPL	0
Hazardous Waste Treatment, Storage, and Disposal Facilities (TSDF)	0

Selected Variables	Value	State		EPA Region		USA	
		Avg.	%tile	Avg.	%tile	Avg.	%tile
Environmental Indicators							
Particulate Matter (PM 2.5 in $\mu\text{g}/\text{m}^3$)	5.02	5.06	47	6.34	3	8.3	1
Ozone (ppb)	34.6	36.4	13	41.1	7	43	9
NATA* Diesel PM ($\mu\text{g}/\text{m}^3$)	0.0487	0.103	2	0.344	<50th	0.479	<50th
NATA* Air Toxics Cancer Risk (risk per MM)	18	20	16	25	<50th	32	<50th
NATA* Respiratory Hazard Index	0.19	0.23	14	0.31	<50th	0.44	<50th
Traffic Proximity and Volume (daily traffic count/distance to road)	0	170	20	930	4	750	4
Lead Paint Indicator (% pre-1960s housing)	0.51	0.35	78	0.45	59	0.28	77
Superfund Proximity (site count/km distance)	0.016	0.14	1	0.15	0	0.13	13
RMP Proximity (facility count/km distance)	0.063	0.17	30	0.57	10	0.74	7
Hazardous Waste Proximity (facility count/km distance)	0.06	0.62	23	2.4	4	4	9
Wastewater Discharge Indicator (toxicity-weighted concentration/m distance)	0	0.011	N/A	0.24	24	14	37
Demographic Indicators							
Demographic Index	30%	18%	91	24%	72	36%	49

Minority Population	6%	7%	60	24%	28	39%	14
Low Income Population	53%	28%	93	25%	89	33%	81
Linguistically Isolated Population	1%	1%	80	5%	50	4%	50
Population with Less Than High School Education	24%	8%	99	9%	90	13%	83
Population under Age 5	8%	5%	88	5%	83	6%	73
Population over Age 64	17%	18%	49	16%	61	15%	68

*The National-Scale Air Toxics Assessment (NATA) is EPA's ongoing, comprehensive evaluation of air toxics in the United States. EPA developed the NATA to prioritize air toxics, emission sources, and locations of interest for further study. It is important to remember that NATA provides broad estimates of health risks over geographic areas of the country, not definitive risks to specific individuals or locations. More information on the NATA analysis can be found at: <https://www.epa.gov/national-air-toxics-assessment>.

For additional information, see: www.epa.gov/environmentaljustice (<http://www.epa.gov/environmentaljustice>)

EJSCREEN is a screening tool for pre-decisional use only. It can help identify areas that may warrant additional consideration, analysis, or outreach. It does not provide a basis for decision-making, but it may help identify potential areas of EJ concern. Users should keep in mind that screening tools are subject to substantial uncertainty in their demographic and environmental data, particularly when looking at small geographic areas. Important caveats and uncertainties apply to this screening-level information, so it is essential to understand the limitations on appropriate interpretations and applications of these indicators. Please see EJSCREEN documentation for discussion of these issues before using reports. This screening tool does not provide data on every environmental impact and demographic factor that may be relevant to a particular location. EJSCREEN outputs should be supplemented with additional information and local knowledge before taking any action to address potential EJ concerns.

Location: User-specified point center at [REDACTED]

Ring (buffer): 1-miles radius

Description: SWB-RIB-002(b)

Summary of ACS Estimates		2013 - 2017		
Population				121
Population Density (per sq. mile)				85
Minority Population				9
% Minority				7%
Households				40
Housing Units				44
Housing Units Built Before 1950				22
Per Capita Income				21,820
Land Area (sq. miles) (Source: SF1)				1.44
% Land Area				99%
Water Area (sq. miles) (Source: SF1)				0.02
% Water Area				1%
		2013 - 2017 ACS Estimates	Percent	MOE (±)
Population by Race				
Total		121	100%	205
Population Reporting One Race		118	97%	297
White		114	94%	193
Black		0	0%	9
American Indian		4	3%	68
Asian		0	0%	9
Pacific Islander		0	0%	9
Some Other Race		0	0%	9
Population Reporting Two or More Races		4	3%	51
Total Hispanic Population		4	3%	66
Total Non-Hispanic Population		117		
White Alone		113	93%	193
Black Alone		0	0%	9
American Indian Alone		1	1%	24
Non-Hispanic Asian Alone		0	0%	9
Pacific Islander Alone		0	0%	9
Other Race Alone		0	0%	9
Two or More Races Alone		4	3%	51
Population by Sex				
Male		61	50%	134
Female		60	50%	116
Population by Age				
Age 0-4		13	11%	71
Age 0-17		30	25%	91
Age 18+		91	75%	138
Age 65+		16	13%	50

Data Note: Detail may not sum to totals due to rounding. Hispanic population can be of any race.

N/A means not available. **Source:** U.S. Census Bureau, American Community Survey (ACS) 2013 - 2017

Location: User-specified point center at [REDACTED]

Ring (buffer): 1-miles radius

Description: SWB-RIB-002(b)

	2013 - 2017 ACS Estimates	Percent	MOE (±)
Population 25+ by Educational Attainment			
Total	82	100%	143
Less than 9th Grade	4	4%	29
9th - 12th Grade, No Diploma	10	12%	55
High School Graduate	36	44%	94
Some College, No Degree	23	28%	74
Associate Degree	4	5%	28
Bachelor's Degree or more	9	11%	42
Population Age 5+ Years by Ability to Speak English			
Total	108	100%	186
Speak only English	103	95%	169
Non-English at Home ¹⁺²⁺³⁺⁴	5	5%	37
¹ Speak English "very well"	4	3%	28
² Speak English "well"	1	1%	14
³ Speak English "not well"	0	0%	24
⁴ Speak English "not at all"	0	0%	9
³⁺⁴ Speak English "less than well"	0	0%	24
²⁺³⁺⁴ Speak English "less than very well"	2	2%	26
Linguistically Isolated Households*			
Total	1	100%	25
Speak Spanish	0	36%	22
Speak Other Indo-European Languages	1	64%	11
Speak Asian-Pacific Island Languages	0	0%	9
Speak Other Languages	0	0%	9
Households by Household Income			
Household Income Base	40	100%	62
< \$15,000	5	12%	45
\$15,000 - \$25,000	7	16%	48
\$25,000 - \$50,000	9	22%	42
\$50,000 - \$75,000	8	19%	41
\$75,000 +	12	30%	50
Occupied Housing Units by Tenure			
Total	40	100%	62
Owner Occupied	29	73%	55
Renter Occupied	11	27%	62
Employed Population Age 16+ Years			
Total	93	100%	149
In Labor Force	59	63%	132
Civilian Unemployed in Labor Force	6	6%	54
Not In Labor Force	34	37%	114

Data Note: Detail may not sum to totals due to rounding. Hispanic population can be of anyrace.

N/A means not available. **Source:** U.S. Census Bureau, American Community Survey (ACS)

*Households in which no one 14 and over speaks English "very well" or speaks English only.

EJSCREEN ACS Summary Report



Location: User-specified point center at [REDACTED]

Ring (buffer): 1-miles radius

Description: SWB-RIB-002(b)

	2013 - 2017 ACS Estimates	Percent	MOE (±)
Population by Language Spoken at Home*			
Total (persons age 5 and above)	N/A	N/A	N/A
English	N/A	N/A	N/A
Spanish	N/A	N/A	N/A
French	N/A	N/A	N/A
French Creole	N/A	N/A	N/A
Italian	N/A	N/A	N/A
Portuguese	N/A	N/A	N/A
German	N/A	N/A	N/A
Yiddish	N/A	N/A	N/A
Other West Germanic	N/A	N/A	N/A
Scandinavian	N/A	N/A	N/A
Greek	N/A	N/A	N/A
Russian	N/A	N/A	N/A
Polish	N/A	N/A	N/A
Serbo-Croatian	N/A	N/A	N/A
Other Slavic	N/A	N/A	N/A
Armenian	N/A	N/A	N/A
Persian	N/A	N/A	N/A
Gujarathi	N/A	N/A	N/A
Hindi	N/A	N/A	N/A
Urdu	N/A	N/A	N/A
Other Indic	N/A	N/A	N/A
Other Indo-European	N/A	N/A	N/A
Chinese	N/A	N/A	N/A
Japanese	N/A	N/A	N/A
Korean	N/A	N/A	N/A
Mon-Khmer, Cambodian	N/A	N/A	N/A
Hmong	N/A	N/A	N/A
Thai	N/A	N/A	N/A
Laotian	N/A	N/A	N/A
Vietnamese	N/A	N/A	N/A
Other Asian	N/A	N/A	N/A
Tagalog	N/A	N/A	N/A
Other Pacific Island	N/A	N/A	N/A
Navajo	N/A	N/A	N/A
Other Native American	N/A	N/A	N/A
Hungarian	N/A	N/A	N/A
Arabic	N/A	N/A	N/A
Hebrew	N/A	N/A	N/A
African	N/A	N/A	N/A
Other and non-specified	N/A	N/A	N/A
Total Non-English	N/A	N/A	N/A

Data Note: Detail may not sum to totals due to rounding. Hispanic population can be of any race.

N/A means not available. **Source:** U.S. Census Bureau, American Community Survey (ACS) 2013 - 2017.

*Population by Language Spoken at Home is available at the census tract summary level and up.

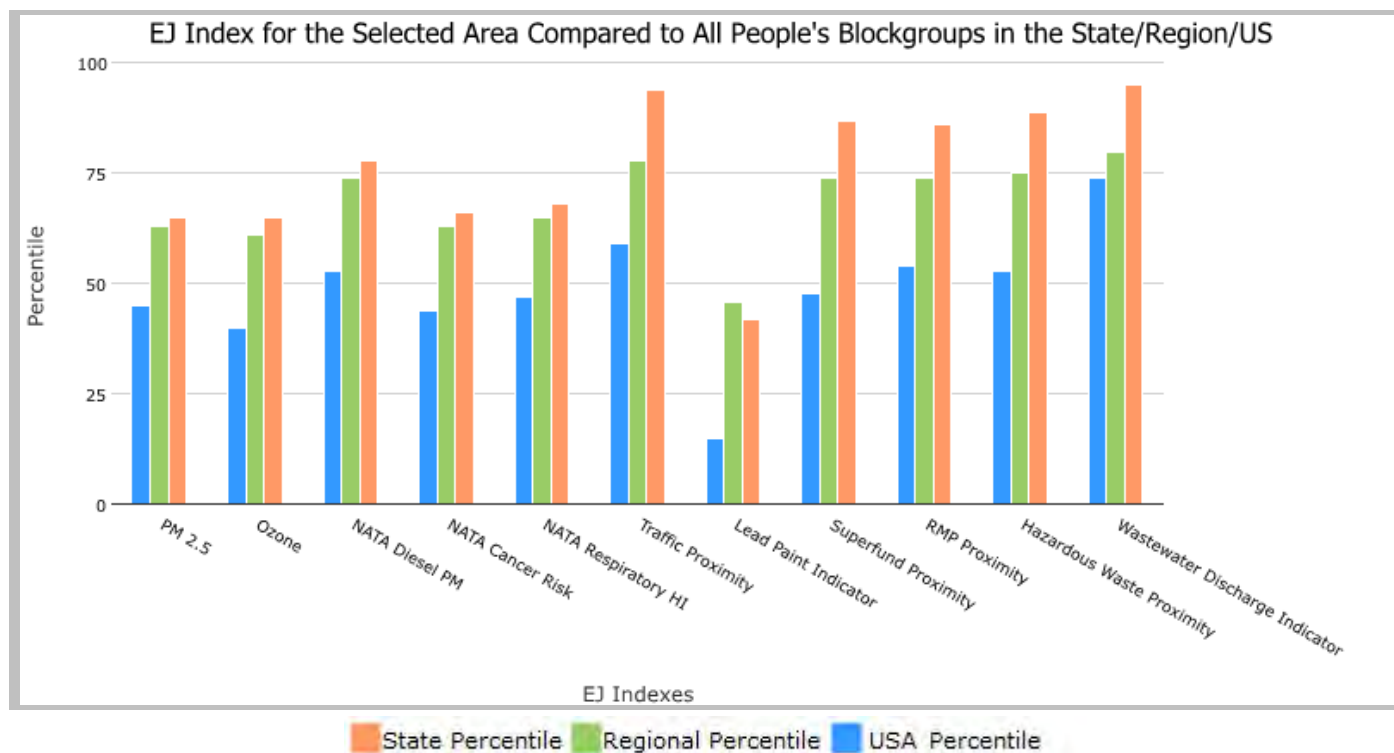
1 miles Ring Centered at [REDACTED], VERMONT, EPA Region 1

Approximate Population: 121

Input Area (sq. miles): 3.14

SWB-RIB-002(b)

Selected Variables	State Percentile	EPA Region Percentile	USA Percentile
EJ Indexes			
EJ Index for PM2.5	65	63	45
EJ Index for Ozone	65	61	40
EJ Index for NATA* Diesel PM	78	74	53
EJ Index for NATA* Air Toxics Cancer Risk	66	63	44
EJ Index for NATA* Respiratory Hazard Index	68	65	47
EJ Index for Traffic Proximity and Volume	94	78	59
EJ Index for Lead Paint Indicator	42	46	15
EJ Index for Superfund Proximity	87	74	48
EJ Index for RMP Proximity	86	74	54
EJ Index for Hazardous Waste Proximity	89	75	53
EJ Index for Wastewater Discharge Indicator	95	80	74



This report shows the values for environmental and demographic indicators and EJSCREEN indexes. It shows environmental and demographic raw data (e.g., the estimated concentration of ozone in the air), and also shows what percentile each raw data value represents. These percentiles provide perspective on how the selected block group or buffer area compares to the entire state, EPA region, or nation. For example, if a given location is at the 95th percentile nationwide, this means that only 5 percent of the US population has a higher block group value than the average person in the location being analyzed. The years for which the data are available, and the methods used, vary across these indicators. Important caveats and uncertainties apply to this screening-level information, so it is essential to understand the limitations on appropriate interpretations and applications of these indicators. Please see EJSCREEN documentation for discussion of these issues before using reports.

EJSCREEN Report (Version 2019)



1 miles Ring Centered at [REDACTED], VERMONT, EPA Region 1

Approximate Population: 121

Input Area (sq. miles): 3.14

SWB-RIB-002(b)

No map available

Sites reporting to EPA	
Superfund NPL	0
Hazardous Waste Treatment, Storage, and Disposal Facilities (TSDF)	0

EJSCREEN Report (Version 2019)



1 miles Ring Centered at [REDACTED], VERMONT, EPA Region 1

Approximate Population: 121

Input Area (sq. miles): 3.14

SWB-RIB-002(b)

Selected Variables	Value	State Avg.	%ile in State	EPA Region Avg.	%ile in EPA Region	USA Avg.	%ile in USA
Environmental Indicators							
Particulate Matter (PM 2.5 in $\mu\text{g}/\text{m}^3$)	4.93	5.06	38	6.34	2	8.3	1
Ozone (ppb)	35	36.4	21	41.1	8	43	10
NATA* Diesel PM ($\mu\text{g}/\text{m}^3$)	0.0535	0.103	4	0.344	<50th	0.479	<50th
NATA* Cancer Risk (lifetime risk per million)	18	20	27	25	<50th	32	<50th
NATA* Respiratory Hazard Index	0.2	0.23	16	0.31	<50th	0.44	<50th
Traffic Proximity and Volume (daily traffic count/distance to road)	0	170	20	930	4	750	4
Lead Paint Indicator (% Pre-1960 Housing)	0.53	0.35	80	0.45	61	0.28	78
Superfund Proximity (site count/km distance)	0.015	0.14	0	0.15	0	0.13	11
RMP Proximity (facility count/km distance)	0.03	0.17	1	0.57	1	0.74	1
Hazardous Waste Proximity (facility count/km distance)	0.031	0.62	2	2.4	1	4	3
Wastewater Discharge Indicator (toxicity-weighted concentration/m distance)	2E-10	0.011	22	0.24	24	14	37
Demographic Indicators							
Demographic Index	23%	18%	80	24%	63	36%	37
Minority Population	7%	7%	67	24%	31	39%	16
Low Income Population	39%	28%	78	25%	79	33%	65
Linguistically Isolated Population	3%	1%	91	5%	62	4%	62
Population With Less Than High School Education	17%	8%	93	9%	82	13%	72
Population Under 5 years of age	11%	5%	97	5%	93	6%	89
Population over 64 years of age	13%	18%	28	16%	40	15%	49

* The National-Scale Air Toxics Assessment (NATA) is EPA's ongoing, comprehensive evaluation of air toxics in the United States. EPA developed the NATA to prioritize air toxics, emission sources, and locations of interest for further study. It is important to remember that NATA provides broad estimates of health risks over geographic areas of the country, not definitive risks to specific individuals or locations. More information on the NATA analysis can be found at: <https://www.epa.gov/national-air-toxics-assessment>.

For additional information, see: www.epa.gov/environmentaljustice

EJSCREEN is a screening tool for pre-decisional use only. It can help identify areas that may warrant additional consideration, analysis, or outreach. It does not provide a basis for decision-making, but it may help identify potential areas of EJ concern. Users should keep in mind that screening tools are subject to substantial uncertainty in their demographic and environmental data, particularly when looking at small geographic areas. Important caveats and uncertainties apply to this screening-level information, so it is essential to understand the limitations on appropriate interpretations and applications of these indicators. Please see EJSCREEN documentation for discussion of these issues before using reports. This screening tool does not provide data on every environmental impact and demographic factor that may be relevant to a particular location. EJSCREEN outputs should be supplemented with additional information and local knowledge before taking any action to address potential EJ concerns.

Location: User-specified point center at [REDACTED]
Ring (buffer): 1-miles radius
Description: SWB-NVB-003

Summary of ACS Estimates		2013 - 2017
Population		262
Population Density (per sq. mile)		189
Minority Population		17
% Minority		6%
Households		129
Housing Units		163
Housing Units Built Before 1950		79
Per Capita Income		19,364
Land Area (sq. miles) (Source: SF1)		1.39
% Land Area		99%
Water Area (sq. miles) (Source: SF1)		0.01
% Water Area		1%

	2013 - 2017 ACS Estimates	Percent	MOE (±)
Population by Race			
Total	262	100%	164
Population Reporting One Race	259	99%	224
White	246	94%	164
Black	1	0%	5
American Indian	12	4%	32
Asian	1	0%	5
Pacific Islander	0	0%	9
Some Other Race	0	0%	9
Population Reporting Two or More Races	4	1%	18
Total Hispanic Population	0	0%	9
Total Non-Hispanic Population	262		
White Alone	246	94%	164
Black Alone	1	0%	5
American Indian Alone	12	4%	32
Non-Hispanic Asian Alone	1	0%	5
Pacific Islander Alone	0	0%	9
Other Race Alone	0	0%	9
Two or More Races Alone	4	1%	18
Population by Sex			
Male	129	49%	93
Female	133	51%	87
Population by Age			
Age 0-4	21	8%	39
Age 0-17	62	24%	64
Age 18+	200	76%	96
Age 65+	45	17%	40

Data Note: Detail may not sum to totals due to rounding. Hispanic population can be of any race.

N/A means not available. **Source:** U.S. Census Bureau, American Community Survey (ACS) 2013 - 2017

Location: User-specified point center at [REDACTED]

Ring (buffer): 1-miles radius

Description: SWB-NVB-003

	2013 - 2017 ACS Estimates	Percent	MOE (±)
Population 25+ by Educational Attainment			
Total	168	100%	82
Less than 9th Grade	12	7%	25
9th - 12th Grade, No Diploma	27	16%	37
High School Graduate	65	39%	50
Some College, No Degree	48	29%	46
Associate Degree	7	4%	14
Bachelor's Degree or more	15	9%	24
Population Age 5+ Years by Ability to Speak English			
Total	241	100%	144
Speak only English	232	96%	121
Non-English at Home ¹⁺²⁺³⁺⁴	9	4%	18
¹ Speak English "very well"	7	3%	15
² Speak English "well"	2	1%	11
³ Speak English "not well"	0	0%	9
⁴ Speak English "not at all"	0	0%	9
³⁺⁴ Speak English "less than well"	0	0%	9
²⁺³⁺⁴ Speak English "less than very well"	2	1%	11
Linguistically Isolated Households*			
Total	2	100%	11
Speak Spanish	0	0%	9
Speak Other Indo-European Languages	1	40%	3
Speak Asian-Pacific Island Languages	0	0%	9
Speak Other Languages	1	60%	5
Households by Household Income			
Household Income Base	129	100%	63
< \$15,000	24	18%	33
\$15,000 - \$25,000	22	17%	36
\$25,000 - \$50,000	39	30%	45
\$50,000 - \$75,000	24	18%	29
\$75,000 +	21	16%	25
Occupied Housing Units by Tenure			
Total	129	100%	63
Owner Occupied	93	72%	52
Renter Occupied	36	28%	44
Employed Population Age 16+ Years			
Total	209	100%	121
In Labor Force	126	60%	81
Civilian Unemployed in Labor Force	6	3%	19
Not In Labor Force	84	40%	73

Data Note: Detail may not sum to totals due to rounding. Hispanic population can be of anyrace.

N/A means not available. **Source:** U.S. Census Bureau, American Community Survey (ACS)

*Households in which no one 14 and over speaks English "very well" or speaks English only.

EJSCREEN ACS Summary Report



Location: User-specified point center at [REDACTED]

Ring (buffer): 1-miles radius

Description: SWB-NVB-003

	2013 - 2017 ACS Estimates	Percent	MOE (±)
Population by Language Spoken at Home*			
Total (persons age 5 and above)	N/A	N/A	N/A
English	N/A	N/A	N/A
Spanish	N/A	N/A	N/A
French	N/A	N/A	N/A
French Creole	N/A	N/A	N/A
Italian	N/A	N/A	N/A
Portuguese	N/A	N/A	N/A
German	N/A	N/A	N/A
Yiddish	N/A	N/A	N/A
Other West Germanic	N/A	N/A	N/A
Scandinavian	N/A	N/A	N/A
Greek	N/A	N/A	N/A
Russian	N/A	N/A	N/A
Polish	N/A	N/A	N/A
Serbo-Croatian	N/A	N/A	N/A
Other Slavic	N/A	N/A	N/A
Armenian	N/A	N/A	N/A
Persian	N/A	N/A	N/A
Gujarathi	N/A	N/A	N/A
Hindi	N/A	N/A	N/A
Urdu	N/A	N/A	N/A
Other Indic	N/A	N/A	N/A
Other Indo-European	N/A	N/A	N/A
Chinese	N/A	N/A	N/A
Japanese	N/A	N/A	N/A
Korean	N/A	N/A	N/A
Mon-Khmer, Cambodian	N/A	N/A	N/A
Hmong	N/A	N/A	N/A
Thai	N/A	N/A	N/A
Laotian	N/A	N/A	N/A
Vietnamese	N/A	N/A	N/A
Other Asian	N/A	N/A	N/A
Tagalog	N/A	N/A	N/A
Other Pacific Island	N/A	N/A	N/A
Navajo	N/A	N/A	N/A
Other Native American	N/A	N/A	N/A
Hungarian	N/A	N/A	N/A
Arabic	N/A	N/A	N/A
Hebrew	N/A	N/A	N/A
African	N/A	N/A	N/A
Other and non-specified	N/A	N/A	N/A
Total Non-English	N/A	N/A	N/A

Data Note: Detail may not sum to totals due to rounding. Hispanic population can be of any race.

N/A means not available. **Source:** U.S. Census Bureau, American Community Survey (ACS) 2013 - 2017.

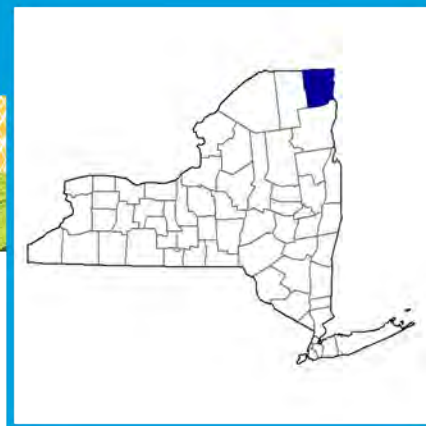
*Population by Language Spoken at Home is available at the census tract summary level and up.

Table 1 Proposed RVSS Sites within the ROI, USBP Swanton Sector

Site Name	Land Use	Real Property/Zoning
SWB-CNB-001a	Rangeland; Undeveloped	classified by the New York State Office of Real Property Services as 484 - One Story Small Structure
SWB-CNB-002a	Forestland; Undeveloped	classified by the New York State Office of Real Property Services as 314 - Rural Vacant Lots of 10 Acres or Less
SWB-SWS-001b	Rangeland; Undeveloped	NA
SWB-RIB-001	Agriculture; Undeveloped	NA
SWB-NVB-001	Rangeland; Undeveloped	NA
SWB-NVB-002	Government; Developed	NA
SWB-NVB-003	Vacant; Developed	NA
Site TBD	Existing Tower; Developed	NA
SWB-RIB-002 (a)	Agriculture; Undeveloped	NA
SWB-RIB-002 (b)	Government; Undeveloped	NA



Clinton County New York



Total and Per Farm Overview, 2017 and change since 2012

	2017	% change since 2012
Number of farms	588	-2
Land in farms (acres)	161,605	+10
Average size of farm (acres)	275	+13
Total	(\$)	
Market value of products sold	167,789,000	+13
Government payments	127,000	-92
Farm-related income	4,063,000	+64
Total farm production expenses	122,577,000	+5
Net cash farm income	49,402,000	+35
Per farm average	(\$)	
Market value of products sold	285,356	+15
Government payments (average per farm receiving)	3,099	-72
Farm-related income	20,113	+97
Total farm production expenses	208,465	+8
Net cash farm income	84,016	+39

3 Percent of state agriculture sales

Share of Sales by Type (%)

Crops	27
Livestock, poultry, and products	73

Land in Farms by Use (%) ^a

Cropland	53
Pastureland	7
Woodland	32
Other	7

Acres irrigated: 771

(Z)% of land in farms

Land Use Practices (% of farms)

No till	10
Reduced till	6
Intensive till	17
Cover crop	5

Farms by Value of Sales

	Number	Percent of Total ^a
Less than \$2,500	196	33
\$2,500 to \$4,999	41	7
\$5,000 to \$9,999	83	14
\$10,000 to \$24,999	85	14
\$25,000 to \$49,999	47	8
\$50,000 to \$99,999	30	5
\$100,000 or more	106	18

Farms by Size

	Number	Percent of Total ^a
1 to 9 acres	70	12
10 to 49 acres	93	16
50 to 179 acres	207	35
180 to 499 acres	138	23
500 to 999 acres	46	8
1,000 + acres	34	6

Market Value of Agricultural Products Sold

	Sales (\$1,000)	Rank in State ^b	Counties Producing Item	Rank in U.S. ^b	Counties Producing Item
Total	167,789	11	61	661	3,077
Crops	44,559	19	61	1,167	3,073
Grains, oilseeds, dry beans, dry peas	7,957	21	55	1,460	2,916
Tobacco	-	-	-	-	323
Cotton and cottonseed	-	-	-	-	647
Vegetables, melons, potatoes, sweet potatoes	1,637	34	60	609	2,821
Fruits, tree nuts, berries	24,207	6	60	97	2,748
Nursery, greenhouse, floriculture, sod	450	46	60	1,070	2,601
Cultivated Christmas trees, short rotation woody crops	97	30	53	268	1,384
Other crops and hay	10,211	8	55	244	3,040
Livestock, poultry, and products	123,230	11	58	401	3,073
Poultry and eggs	(D)	1	57	(D)	3,007
Cattle and calves	(D)	(D)	55	(D)	3,055
Milk from cows	69,077	14	51	124	1,892
Hogs and pigs	47	40	55	1,127	2,856
Sheep, goats, wool, mohair, milk	19	54	54	2,207	2,984
Horses, ponies, mules, burros, donkeys	221	31	55	887	2,970
Aquaculture	-	-	34	-	1,251
Other animals and animal products	84	37	58	803	2,878

Total Producers ^c	976	Percent of farms that:	Top Crops in Acres ^d	
Sex				
Male	655	Have internet access	Forage (hay/haylage), all	37,445
Female	321		Corn for silage or greenchop	13,355
			Corn for grain	10,163
Age			Apples	3,283
<35	77	Farm organically	Oats for grain	826
35 – 64	647			
65 and older	252			
Race				
American Indian/Alaska Native	12	Sell directly to consumers		
Asian	1			
Black or African American	1			
Native Hawaiian/Pacific Islander	-			
White	962	Hire farm labor		
More than one race	-			
Other characteristics				
Hispanic, Latino, Spanish origin	4	Are family farms		
With military service	87			
New and beginning farmers	276			
			Livestock Inventory (Dec 31, 2017)	
			Broilers and other meat-type chickens	1,040
			Cattle and calves	33,373
			Goats	254
			Hogs and pigs	149
			Horses and ponies	946
			Layers	(D)
			Pullets	(D)
			Sheep and lambs	297
			Turkeys	48

See 2017 Census of Agriculture, U.S. Summary and State Data, for complete footnotes, explanations, definitions, commodity descriptions, and methodology.

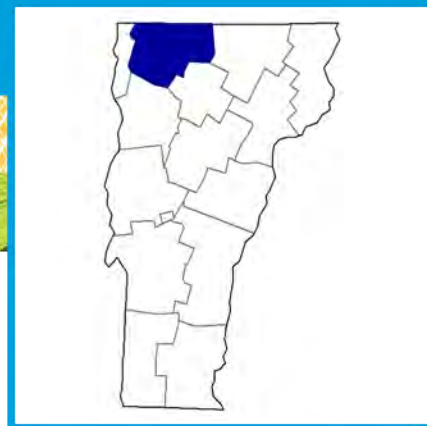
^a May not add to 100% due to rounding. ^b Among counties whose rank can be displayed. ^c Data collected for a maximum of four producers per farm.

^d Crop commodity names may be shortened; see full names at www.nass.usda.gov/go/croptnames.pdf. ^e Position below the line does not indicate rank.

(D) Withheld to avoid disclosing data for individual operations. (NA) Not available. (Z) Less than half of the unit shown. (-) Represents zero.



Franklin County Vermont



Total and Per Farm Overview, 2017 and change since 2012

	2017	% change since 2012
Number of farms	729	-1
Land in farms (acres)	189,699	+2
Average size of farm (acres)	260	+3
Total	(\$)	
Market value of products sold	185,613,000	+1
Government payments	965,000	-67
Farm-related income	7,201,000	+22
Total farm production expenses	142,623,000	-6
Net cash farm income	51,156,000	+22
Per farm average	(\$)	
Market value of products sold	254,614	+2
Government payments (average per farm receiving)	11,350	-3
Farm-related income	19,676	+26
Total farm production expenses	195,642	-5
Net cash farm income	70,173	+24

24 Percent of state agriculture sales

Share of Sales by Type (%)

Crops	21
Livestock, poultry, and products	79

Land in Farms by Use (%) ^a

Cropland	44
Pastureland	9
Woodland	42
Other	5

Acres irrigated: 284

(Z)% of land in farms

Land Use Practices (% of farms)

No till	6
Reduced till	9
Intensive till	14
Cover crop	11

Farms by Value of Sales

	Number	Percent of Total ^a
Less than \$2,500	176	24
\$2,500 to \$4,999	48	7
\$5,000 to \$9,999	73	10
\$10,000 to \$24,999	80	11
\$25,000 to \$49,999	89	12
\$50,000 to \$99,999	32	4
\$100,000 or more	231	32

Farms by Size

	Number	Percent of Total ^a
1 to 9 acres	74	10
10 to 49 acres	154	21
50 to 179 acres	218	30
180 to 499 acres	203	28
500 to 999 acres	51	7
1,000 + acres	29	4

Market Value of Agricultural Products Sold

	Sales (\$1,000)	Rank in State ^b	Counties Producing Item	Rank in U.S. ^b	Counties Producing Item
Total	185,613	1	14	583	3,077
Crops	38,698	1	14	1,257	3,073
Grains, oilseeds, dry beans, dry peas	3,918	2	14	1,726	2,916
Tobacco	-	-	-	-	323
Cotton and cottonseed	-	-	-	-	647
Vegetables, melons, potatoes, sweet potatoes	1,640	6	14	608	2,821
Fruits, tree nuts, berries	(D)	11	14	(D)	2,748
Nursery, greenhouse, floriculture, sod	2,032	5	14	646	2,601
Cultivated Christmas trees, short rotation woody crops	(D)	6	13	(D)	1,384
Other crops and hay	30,678	1	14	69	3,040
Livestock, poultry, and products	146,916	2	14	315	3,073
Poultry and eggs	(D)	2	14	(D)	3,007
Cattle and calves	14,453	1	14	1,005	3,055
Milk from cows	129,508	1	14	59	1,892
Hogs and pigs	74	10	14	986	2,856
Sheep, goats, wool, mohair, milk	1,419	1	14	122	2,984
Horses, ponies, mules, burros, donkeys	(D)	9	14	(D)	2,970
Aquaculture	-	-	6	-	1,251
Other animals and animal products	176	5	13	568	2,878

Total Producers ^c	1,378	Percent of farms that:	Top Crops in Acres ^d	
Sex				
Male	845	Have internet access	Forage (hay/haylage), all	49,414
Female	533		Corn for silage or greenchop	21,053
Age			Corn for grain	5,527
<35	132	Farm organically	Vegetables harvested, all	287
35 – 64	843		Soybeans for beans	286
65 and older	403			
Race				
American Indian/Alaska Native	-	Sell directly to consumers		
Asian	1			
Black or African American	-	Hire farm labor		
Native Hawaiian/Pacific Islander	-			
White	1,361			
More than one race	16			
Other characteristics				
Hispanic, Latino, Spanish origin	10	Are family farms		
With military service	99			
New and beginning farmers	328			

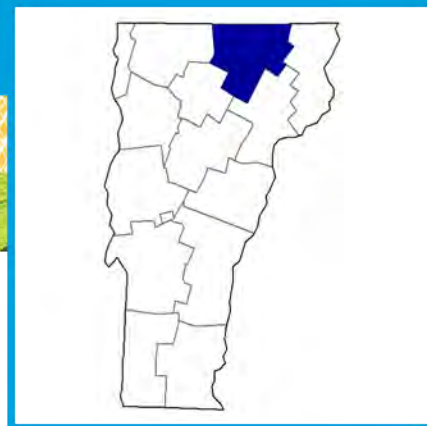
See 2017 Census of Agriculture, U.S. Summary and State Data, for complete footnotes, explanations, definitions, commodity descriptions, and methodology.

^a May not add to 100% due to rounding. ^b Among counties whose rank can be displayed. ^c Data collected for a maximum of four producers per farm.

^d Crop commodity names may be shortened; see full names at www.nass.usda.gov/go/cropnames.pdf. ^e Position below the line does not indicate rank. (D) Withheld to avoid disclosing data for individual operations. (NA) Not available. (Z) Less than half of the unit shown. (-) Represents zero.



Orleans County Vermont



Total and Per Farm Overview, 2017 and change since 2012

	2017	% change since 2012
Number of farms	558	-13
Land in farms (acres)	128,388	-2
Average size of farm (acres)	230	+13
Total	(\$)	
Market value of products sold	92,000,000	-7
Government payments	234,000	-83
Farm-related income	3,195,000	+36
Total farm production expenses	71,841,000	-12
Net cash farm income	23,588,000	+12
Per farm average	(\$)	
Market value of products sold	164,875	+6
Government payments (average per farm receiving)	11,692	+35
Farm-related income	12,832	+43
Total farm production expenses	128,747	(Z)
Net cash farm income	42,273	+28

12 Percent of state agriculture sales

Share of Sales by Type (%)

Crops	14
Livestock, poultry, and products	86

Land in Farms by Use (%) ^a

Cropland	46
Pastureland	9
Woodland	40
Other	6

Acres irrigated: 96

(Z)% of land in farms

Land Use Practices (% of farms)

No till	6
Reduced till	4
Intensive till	7
Cover crop	6

Farms by Value of Sales

	Number	Percent of Total ^a
Less than \$2,500	159	28
\$2,500 to \$4,999	65	12
\$5,000 to \$9,999	58	10
\$10,000 to \$24,999	91	16
\$25,000 to \$49,999	39	7
\$50,000 to \$99,999	28	5
\$100,000 or more	118	21

Farms by Size

	Number	Percent of Total ^a
1 to 9 acres	40	7
10 to 49 acres	145	26
50 to 179 acres	185	33
180 to 499 acres	137	25
500 to 999 acres	35	6
1,000 + acres	16	3

Market Value of Agricultural Products Sold

	Sales (\$1,000)	Rank in State ^b	Counties Producing Item	Rank in U.S. ^b	Counties Producing Item
Total	92,000	3	14	1,230	3,077
Crops	12,617	4	14	1,923	3,073
Grains, oilseeds, dry beans, dry peas	456	9	14	2,276	2,916
Tobacco	-	-	-	-	323
Cotton and cottonseed	-	-	-	-	647
Vegetables, melons, potatoes, sweet potatoes	116	14	14	1,498	2,821
Fruits, tree nuts, berries	210	13	14	995	2,748
Nursery, greenhouse, floriculture, sod	1,205	8	14	801	2,601
Cultivated Christmas trees, short rotation woody crops	899	1	13	45	1,384
Other crops and hay	9,731	3	14	259	3,040
Livestock, poultry, and products	79,383	3	14	659	3,073
Poultry and eggs	72	12	14	1,134	3,007
Cattle and calves	5,923	3	14	1,600	3,055
Milk from cows	72,090	3	14	118	1,892
Hogs and pigs	105	6	14	896	2,856
Sheep, goats, wool, mohair, milk	699	5	14	239	2,984
Horses, ponies, mules, burros, donkeys	64	10	14	1,678	2,970
Aquaculture	-	-	6	-	1,251
Other animals and animal products	431	2	13	324	2,878

Total Producers ^c	986	Percent of farms that:	Top Crops in Acres ^d	
Sex				
Male	587	Have internet access	Forage (hay/haylage), all	38,063
Female	399		Corn for silage or greenchop	13,121
			Cultivated Christmas trees	1,169
			Corn for grain	66
			Vegetables harvested, all	53
Age				
<35	95	Farm organically		
35 – 64	609			
65 and older	282			
Race				
American Indian/Alaska Native	5	Sell directly to consumers		
Asian	-			
Black or African American	-			
Native Hawaiian/Pacific Islander	-			
White	967	Hire farm labor		
More than one race	14			
Other characteristics				
Hispanic, Latino, Spanish origin	15	Are family farms		
With military service	97			
New and beginning farmers	318			
			Livestock Inventory (Dec 31, 2017)	
			Broilers and other meat-type chickens	884
			Cattle and calves	37,437
			Goats	1,360
			Hogs and pigs	218
			Horses and ponies	511
			Layers	2,098
			Pullets	241
			Sheep and lambs	1,217
			Turkeys	247

See 2017 Census of Agriculture, U.S. Summary and State Data, for complete footnotes, explanations, definitions, commodity descriptions, and methodology.

^a May not add to 100% due to rounding. ^b Among counties whose rank can be displayed. ^c Data collected for a maximum of four producers per farm.

^d Crop commodity names may be shortened; see full names at www.nass.usda.gov/go/cropnames.pdf. ^e Position below the line does not indicate rank.

(D) Withheld to avoid disclosing data for individual operations. (NA) Not available. (Z) Less than half of the unit shown. (-) Represents zero.