

# Automated Commercial Environment

## Chapter 3: Creating EDIFACT Transactions

November 6, 2006



U.S. Customs and  
Border Protection



# 3 Creating EDIFACT Transactions

## *In this Chapter*

<b>For this section...</b>	<b>See page...</b>
3.1 Understanding EDIFACT .....	2
3.2 EDIFACT Message Segments Overview .....	3
3.3 Data Segment Structure .....	7
3.4 Two EDIFACT segments examples .....	10
3.5 Sample Message scenarios .....	11
3.6 Accept/Reject Notification (CUSRES) .....	30
3.7 Modifying Trips and Shipments .....	32
3.8 Amending a Trip or Shipment using the CUSCAR.....	33
3.9 Deleting versus delinking shipments .....	34

## 3.1 Understanding EDIFACT

Similar to the ANSI X12 309 Manifest transaction set, the EDIFACT transaction set also provides CBP with the same type of information for trip and shipment. The complete message may be an all-in-one manifest (shipments, crew, conveyance, equipment, and trip information) or it may be a preliminary shipment that will be linked to a CUSREP and PAXLST transaction sets.

### 3.1.1 Format Descriptions

Format	Definition
<b>Inbound Messages</b>	
CUSCAR	<p>The Customs Cargo message (CUSCAR) is used to submit a complete cargo manifest (trip identifier, conveyance details, crew/passengers identifier(s), equipment details and shipment details,) for a truck when the crew and/or passengers have an ACE Id (<i>Complete Manifest</i>). As well, it can be used to submit a partial cargo manifest (trip identifier, conveyance details, crew/passenger identifier(s), equipment details and/or shipment details) to be incorporated into a complete manifest in the future (<i>Preliminary Manifest</i>). The CUSCAR can be used to submit an indication that a manifest sent at a previous time is now complete (Manifest Confirmation); to change any of the above submissions before or after complete manifest indicated; or to delete any of the above submissions before or after complete manifest indicated.</p> <p><b>Used by:</b></p> <ul style="list-style-type: none"> <li>Complete Manifests</li> <li>Empty Trips</li> <li>IITs</li> </ul>
CUSREP	<p>This Customs Conveyance Report message (CUSREP) permits the transfer of data from a carrier to a Customs administration for the purpose of meeting Customs reporting requirements in respect of the means of transport on which cargo is carried. The CUSREP is used to submit a complete crew and conveyance report (trip identifier, conveyance details, crew/passengers identifier(s), equipment details and any shipment identifiers) for a truck when all crew and/or passengers have an ACE id and shipment details, if any, have been sent previously. (<i>Complete Trip</i>). As well, it can be used to submit a crew and conveyance report (trip identifier, conveyance details, crew/passengers identifier(s), equipment details and/or any shipment identifiers). (<i>Preliminary Trip</i>). The CUSREP is also used to submit an indication that a crew and conveyance report previously submitted is now complete. (Trip Confirmation), to change a crew/conveyance report previously submitted, to delete a trip and to verify arrival of an in-bond movement at the in-bond destination.</p>
PAXLST	<p>Permits the transfer of passenger/crew data from a Customs, Immigration or other designated authority in the country of departure to the appropriate authorities in the country of arrival of the means of transport.</p> <p>Where national privacy legislation permits, and with the agreement of all parties involved, this message may also be exchanged between carriers and Customs, Immigration, Police or any</p>

	<p>designated authorities.</p> <p>This transfer of data may occur upon departure from the sending agency and prior to arrival of the vessel/ flight at the receiving agency. This is to permit the designated authority at the place of destination to screen this data and take timely decisions related to the clearance of passengers and crew.</p> <p>The transfer of data may also occur prior to departure, carriers may transmit passenger listings to customs and immigration for pre-arrival clearance.</p>
<b>Outbound Messages</b>	
CUSRES	<p>This is the Customs and Border Protection ACE implementation guideline to be used to provide pre-arrival, arrival, and release STATUS NOTIFICATIONS for truck manifest (both standard and preferred).</p> <p>Permits the transfer of data from a customs administration:</p> <ul style="list-style-type: none"> <li>to acknowledge the receipt of the message</li> <li>to indicate whether the information received is correct or if there are errors (that is, accepted without errors, accepted with errors, rejected, etc.)</li> <li>to inform the sender of the status of the customs declaration (that is, goods released, goods for examination, documents required, etc.)</li> <li>to transmit additional information as agreed between parties (that is, tax information, quantity information, etc.)</li> <li>to respond to batched messages (that is, CUSCAR, CUSREP, CUSEXP).</li> </ul> <p><b>NOTE</b> This message is not meant to replace the functionality of the CONTRL message.</p>
CONTRL	<p>This transaction set, actually a response from the translator proper, acknowledges the success or failure of message transactions sent to CBP after standard syntax compliance checking is done. It acknowledges:</p> <p>The communications infrastructure has received the message and can forward it to the appropriate application/subsystem. This acceptance is stored and may be sent to the carrier who transmitted the data, if requested.</p>

### 3.2 EDIFACT Message Segments Overview

Units of information (electronic business transactions) used in data interchange relate to key functions or operational events. These units of information - transaction set, segment, data element - may be of variable length. This information is communicated between a user's computer system and computer systems of other users in the same community of interest. Electronic business transactions are represented as transaction sets that identify the structure of the data stream communicating the information between systems. The transaction set equates to a document in a paperwork system, such as a bill of lading. The transaction set is further defined in terms of segments (or lines of information) and the segment is defined in terms of data elements.

(Note: although the UN/EDIFACT Standard Message dictionary –UNSM– references a business transactions as a ‘Message Set’, for purposes of this documentation the term ‘transaction set’ will be used interchangeably between ANSI X12 transactions and UN/EDIFACT transactions.)

### 3.2.1 STRUCTURE OF AN INTERCHANGE

An EDIFACT transmission, or interchange, is opened and closed by a number of mandatory or conditional *service segments*, which constitute the “envelope” for the transmission as a whole and for messages and groups of messages within it. Inside this envelope, each message is made up of *user segments*. Both service segments and user segments begin with a three-letter identifier, and end with a segment separator.

The structure is organized on three levels:

- Interchange - An interchange begins with a UNB segment and ends with a UNZ segment.
- Group - A group begins with a UNG segment and ends with a UNE segment.
- Message - A message begins with a UNH segment and ends with a UNT segment.
- An optionally included UNA segment preceding the UNB segment is used to ‘set’ the syntax for the following transaction.

A complete two shipment interchange can be represented like this:

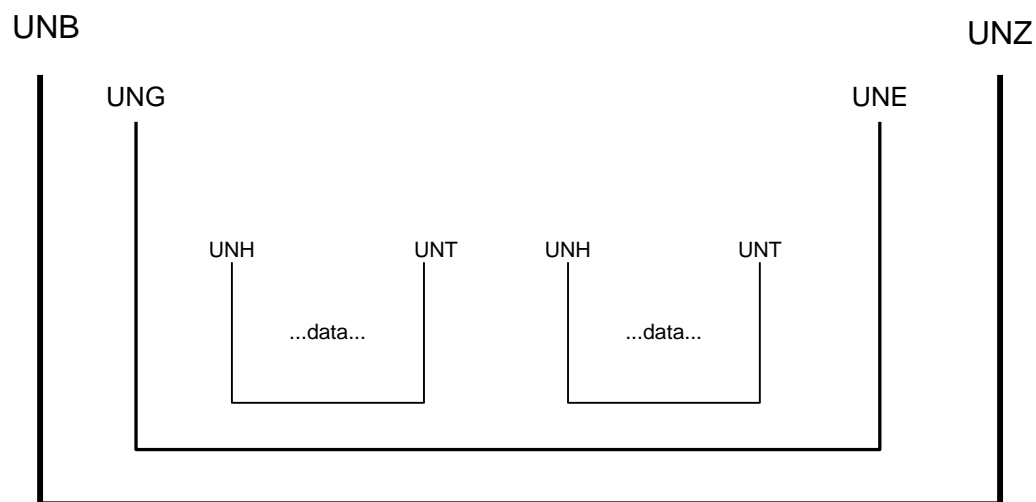


Figure 3-1. Diagram of the EDIFACT envelope

In this section introduces the minimum required data segments for a complete one shipment manifest.

The first mandatory segment is the UNB *Interchange Header*, which identifies the following:

- sender and addressee for the transmission
- specifies the character set used
- carries other housekeeping data

**NOTE** Do not assume that the Transmitter and Preparer for the transmission are the same as the sender and addressee for individual messages within it, and there are indeed real situations in which they are not.

The UNB *Interchange Header* segment is matched with a mandatory UNZ *Interchange Trailer* segment, which ends the transmission, and provides a first level of checking on the integrity of the interchange.

If a single transmission includes messages of different types, each different type is placed into a group introduced by a **UNG Functional Group Header** segment and terminated by a **UNE Functional Group Trailer** segment. In practice, there is no need in most EDIFACT applications to mix different message types in a single transmission, and the Group level is not generally used.

```

→ UNB+UNOA:4+LOCK:02+CBP-ACE-TEST:02+041014:1953+55++ACE
  UNG+CUSREP+LOCK:02+LOCK:02+041016:1604+55+UN+D:03B:
  UNH+55+CUSREP:D:03B:UN
  BGM+336:::STANDARD+LOCK20060419CQ000+2
  DTM+132:200604302300:203
  LOC+60+0901:77
  NAD+CA+LOCK:109
  UNT+6+55
→ UNE+1+55
  UNZ+1+55
  
```

Figure 3-2. Example is of CUSREP Trip shell transaction set:

Finally, each message is introduced by a mandatory **UNH Message Header** segment, and ends with a mandatory **UNT Message Trailer** segment. The UNH segment identifies the message type and version, and the agency responsible for its maintenance. The UNT segment provides another level of basic integrity checking.

### 3.2.2 Transaction Set

A transaction set is a group of standard data segments, in a predefined sequence, that provide the data required to define a complete transaction such as a bill of lading.

```

1 UNB+UNOA:4+LOCK:02+CBP-ACE-TEST:02+041016:1604+54++ACE
2 UNG+CUSCAR+LOCK:02+LOCK:02+041016:1604+54+UN+D:03B:
3 UNH+54+CUSCAR:D:03B:UN
4 BGM+85:::STANDARD+LOCK08080TEST01+22
5 DTM+132:200607302359:203
6 LOC+60+3004:77
7 NAD+CA+LOCK:172
8 NAD+VW+47192:109+++77 SUNSET STRIP+HOLLYWOOD+FL:163+30310
9 TDT+11++03+:::TR++I++:146::16ABB43764376
10 TDT+11++03+:::TR++I++:274::11223344
11 TDT+11++03+:::TR++I++:215::HAULN:US
12 LOC+89+TX:163
13 CNI+1+:23
14 DOC+630+COMPLETE MANIFEST
15 RFF+AAAM:LOCK08080TEST01
16 NAD+OS+++SHIPPING STUFF 4 U+555 LONG TRUCK DRIVE+MIDLAND+TX:163+67743+US
17 NAD+CN+++WORKS SOMETIMES+777 RESEARCH PARKWAY+SHREVEPORT+LA:163+77806+US
18 GID+1
19 PAC+108++COL
20 FTX+AAA+++LST2 BIG SHOCKS
21 MEA+AAI++K:750
22 UNT+20+54
23 UNE+1+54
24 UNZ+1+54
25 |
  
```

Figure 3-3. CUSCAR Complete Transaction set

### Data Element

The smallest information unit in the information structure is the data element. A data element may be a single character code, a series of characters constituting a literal description or a numeric quantity. The length characteristics of a data element are defined with a min/max field length definition for which the data being transmitted in the element must comply.

**For example:** LOCK, 47192, 77 SUNSET STRIP

### Data Element Delimiter

Typically within the EDIFACT messaging scheme, the plus sign (+) is used as the delimiter that precedes each data element within a segment. When there is no data being transmitted for a defined element, the plus sign is transmitted to preserve the data element count unless the blank elements are the last in the segment. In that case, transmission of the data segment terminator code indicates that all non-transmitted elements are blank.

### Data Element Identifying Numbers

Each data element is assigned a unique reference number in the master data element list.

Example:

Data Element	Component Element	Name	Attributes
C002		DOCUMENT/MESSAGE NAME	C 1
	1001	Document name code	C an..3
		WHEN reporting a Complete Manifest, use 85.	
		WHEN reporting a Preliminary Manifest, use 87.	
		WHEN reporting a Confirmation for a Manifest, use 85.	
		85 Customs manifest	
		87 General cargo summary manifest report	

Figure 3-4 - The Data Element Reference code 'C002' identifies this element as a 'Composite' data element. Data Element '1001' is a 'component' data element (or sub-element) within the composite. As simple data element would be labeled at the same level as the C002 above with a fully numeric tag.

The second data element in the **BGM** segment has a location C002/1001. This is referred to as a reference designator. Where the '85' means Customs Manifest.

```

UNH+54+CUSCAR:D:03B:UN
BGM+85:::STANDARD+LOCK08080TEST01+22
DTM+132:200607302359:203
LOC+60+3004:77
NAD+CA+LOCK:172
NAD+VW+47192:109+++77 SUNSET STRIP+HOLLYWOOD+FL:163+30310
TDT+11++03+:::TR++I++:146::16ABB43764376
    
```

Figure 3-5 - Simple data displaying the **BGM** segment

### Data Segment

A data segment is composed of a function identifier and one or more functionally related data elements positioned serially in a standard manner with

a data element delimiter preceding each data element and a segment terminator character immediately following the last data element transmitted.

For example:

**NAD**+VW+47192:109+++77 SUNSET STRIP+HOLLYWOOD+FL:163+30310

#### Data Segment Identifier

Each data segment has a unique identifier consisting of the combination of two or three alpha/numeric characters. The data segment identifiers are specified in the first positions of each individual segment.

**For example:** UNB, UNG, UNH, BGM, DTM, LOC, NAD, etc.

```
UNB+UNOA:4+LOCK:02+CBP-ACE-TEST:02+041016:1604+54++ACE
UNG+CUSCAR+LOCK:02+LOCK:02+041016:1604+54+UN+D:03B:
UNH+54+CUSCAR:D:03B:UN
BGM+85:::STANDARD+LOCK08080TEST01+22
DTM+132:200607302359:203
LOC+60+3004:77
NAD+CA+LOCK:172
NAD+VW+47192:109+++77 SUNSET STRIP+HOLLYWOOD+FL:163+30310
TDT+11++03+:::TR++I++:146:::16ABB43764376
```

Figure 3-6 – Simple data set with data segments

#### Data Segment Terminator

Each data segment is terminated by a special character inserted in the data segment immediately following the last data element to be transmitted. The quote ( ' ) character is typically used in the UN/EDIFACT messaging scheme as the segment terminator..

## 3.3 Data Segment Structure

A segment consists of:

- A three-letter segment tag, which identifies the segment
- Data element separators
- Simple, composite, or component data elements (that is, sub-elements)
- A segment terminator

### 3.3.1 Data Segments

**Data elements** are identified with either a mandatory or optional requirement designation within the definition of the segment. **Segments** are identified with either a mandatory or optional requirement designation within the definition of the transaction set. Segments must be transmitted according to the specified standard sequence within a transaction set.

- Data elements are defined as having a minimum and maximum length.
- A composite data element contains two or more component data elements.
- A component data element is a simple data element used in a composite data element.
- A simple data element or component data element can be qualified by another data element appearing in the segment in order to give meaning to the associated element. Typically the qualifying value is expressed as a



code that gives specific meaning to the data. The data value of a qualifier is a code taken from an agreed set of code values.

### Repeatable Segments

Individual data segments may be repeated for a specific number of times according to user requirements (maximum use). Maximum use specifications are incorporated in the EDI edit tables. (A mandatory segment is mandatory for its first time of occurrence, that is, if a mandatory segment has a maximum use of 3, only 1 is mandatory and 2 more can be used if required.) Groups of segments may be repeated for a specific number of times as defined for loops below.

### Repeatable Segment Loops

Some segments in the EDI standards assume a special relationship with other segments. This necessitates a procedure under which groups of segments may be collectively repeated in a serial fashion for up to a specified maximum number of times (loop). This maximum is indicated by the loop index number appearing with the first segment in the loop. This group of segments is associated by the loop identifier.

0340		Segment Group 8: CNI-CNT-DOC-SG9	C	9999
0350	CNI	Consignment Information	M	1
0365	DOC	Document/Message Details	C	999
0370		Segment Group 9: RFF-CNT-MOA-LOC-GEI-CUX-CPI-SG10-SG12-SG14-SG15	C	9999
0380	RFF	Reference	M	1
0390	CNT	Control Total	C	9
0410	LOC	Place/Location Identification	C	99
0420	GEI	Processing Information	C	9
0450		Segment Group 10: TDT-LOC-DTM-MEA-SG11	C	9
0460	TDT	Transport Information	M	1
0480	DTM	Date/Time/Period	C	9
0500		Segment Group 11: RFF-TSR	C	9
0510	RFF	Reference	M	1
0520	TSR	Transport Service Requirements	C	9
0530		Segment Group 12: NAD-DTM-RFF-SG13	C	99
0540	NAD	Name and Address	M	1
0570		Segment Group 13: CTA-COM	C	9
0580	CTA	Contact Information	M	1
0590	COM	Communication Contact	C	9
0630		Segment Group 15: GID-PAC-HAN-FTX-MEA-MOA-SGP-DGS-PCI-CST-LOC-TMD-SG16-SG17	M	9999
0640	GID	Goods Item Details	M	1
0650	PAC	Package	C	9
0670	FTX	Free Text	C	99
0680	MEA	Measurements	C	99

Figure 3-7 – Example CUSCAR looping structure

The loop identifier consists of the segment ID followed by loop index, that is, Segment Group 8:CNI-CNT-DOC-SG9. Loops are either mandatory or optional. The classification of the first segment within the loop determines whether the loop is mandatory or optional.

**NOTE** This document lists the looping constructs that are **required** for the EDIFACT

format to pass successfully through a translator.

### 3.3.2 Data Separators

In principle, any five available characters may be defined as separators by declaring them in the UNA segment at the start of a transmission. In practice, the following are the most widely used within the UN/EDIFACT messaging scheme:

Separator	Symbol	Description
Apostrophe	'	segment terminator
Plus sign	+	segment tag and data element separator
Colon	:	component data element separator
Period	.	decimal point (in numeric data elements only)
Question Mark	?	release character

The function of the *release character* is to allow the use of a character used for *any* type of delimitation in the transaction to be viewed as legitimate text data in the specific data element text. The *release character* simply precedes the specific character.

For example, if + and ? are used as message delimiters, an international telephone number could be expressed as ?+44 171 607 0021. The '?' mark, as a *release character* would thereby identify to the translation software that the following '+' sign should NOT be interpreted as a delimiter, but as an actual piece of the data in the element. A question mark could be expressed as ??. (The release character is not needed with the symbol defined to represent a decimal point, since this applies only in numeric data elements, not in text data elements.)

The release character is not counted within the maximum length defined for an EDIFACT data element. Most standard EDI conversion software will handle these coding conventions in such a way that the user application is unaware of them.

### 3.3.3 Representation of numeric values

Numeric data elements in EDIFACT are sent as real, positive or negative, decimal numbers, with a decimal point and/or a minus sign if required, and without leading or trailing zeros, except for a single zero before the decimal point if the value is less than 1. The decimal point and the minus sign are not counted within the maximum length of the data element.

Thus the following are all valid contents of a numeric data element in EDIFACT:

123      12.30.12      000121 and all would be counted as having three characters.

### 3.3.4 Omission of unused elements

To keep messages concise, EDIFACT omits unused elements wherever possible. Any complete segment or segment group which is not required in the message is omitted. A segment is terminated immediately after the last data

element for which there is actual content. Empty data elements are represented by including the required separators, and nothing else (as, for example, in a comma-delimited format).

### 3.4 Two EDIFACT segments examples

To illustrate the principles which have been described above, we show in this section two standard EDIFACT segments: a DTM (date/time/period) segment and a NAD (name and address) segment.

#### 3.4.1 Date/time/period segment

A DTM segment is used in any context where it is necessary to represent a date, a date and time, or a time period. It consists of the segment tag DTM and one composite data element with three components: a date qualifier, which specifies the function of the date segment in the context in which it occurs; the date/time or time period itself; and a date format qualifier, which specifies which of a very wide range of standard formats has been used for the date/time or time period.

The date qualifier can indicate, for example, that this occurrence of the DTM segment represents the date of the message, or the date at which an order line is to be cancelled if the item has not yet been supplied, or the time period during which a special price is applicable.

**DTM example** - DTM+132:200609302300:203'

Segment	Description
<b>DTM</b>	Segment tag, identifying a Date/time/period segment
<b>+</b>	Data element separator
<b>132</b>	Date qualifier, indicating that this DTM segment carries an availability date (for example, the expected arrival date at a Port
<b>:</b>	Component data element separator within a composite
<b>200609302300</b>	Date:30 September 2006 2300hr, in the format specified by the date/hour format qualifier
<b>:</b>	Component data element separator
<b>203</b>	Date format qualifier, indicating the format CCYYMMDD
<b>'</b>	Segment terminator

#### 3.4.2 Name and address segment

A NAD segment is used in any context where it is necessary to represent a personal or corporate name and address. It consists of the segment tag NAD, a party qualifier which specifies the function of the NAD segment in the context in which it occurs, and a series of simple and composite data elements which allow the name and address to be represented by an agreed code and/or by structured or relatively unstructured text fields.

**NAD example** - Name identified using an ACE ID

NAD+VW+47192:109+++77 SUNSET STRIP+HOLLYWOOD+FL:163+30310

Segment	Description
<b>NAD</b>	Segment tag, identifying a Name and address segment
<b>+</b>	Data element separator
<b>VW</b>	Party qualifier, indicating that this NAD segment identifies the buyer in a purchase transaction
<b>+</b>	Data element separator
<b>47192</b>	ACE ID
<b>:</b>	Component data element separator
<b>109</b>	Code identifying the need for an ACE ID
<b>+</b>	Data element separator
<b>+</b>	Data element separator
<b>+</b>	Data element separator
<b>77 SUNSET STRIP</b>	Address
<b>+</b>	Data element separator
<b>HOLLYWOOD</b>	City
<b>+</b>	Data element separator
<b>FL</b>	State
<b>:</b>	Component data element separator
<b>63</b>	Code identifying the need for entry of state abbreviation
<b>+</b>	Data element separator
<b>30310</b>	Zip code
<b>'</b>	Segment terminator

It is hoped that these rather elementary examples will give some indication of the way in which standard segments provide very considerable flexibility and scope. These standard segments are the “building blocks” from which EDIFACT messages are constructed.

**NOTE** The data presented are the minimum requirements. The associated responses are provided (355 for ANSI X.12, CUSRES for EDIFACT).

### 3.5 Sample Message scenarios

The same two message scenarios are described for ANSI X.12 and EDIFACT. They are:

1. The One-Step Process - Complete e-manifest
2. The Multi-Step process consists of:
  - Three separate submissions of the unassociated shipment, trip shell information, crew information
  - Another Transaction set submission to link all the above
  - Ending the Manifest

**NOTE** This document outlines the majority of cases that you will encounter but is not by any means inclusive of all situations.

### **3.5.1 Scenario 1 – The One-Step Process or Complete Manifest**

If a manifesting carrier is in possession of full shipment and trip information, the carrier may transmit an original manifest message (CUSCAR Customs Cargo message) identifying the trip, conveyance, crew, equipment and associated shipments. The following diagram describes the electronic flow through the ACE system.

In the following one step process, the carrier used either an ACE ID or FAST Driver ID in the CUSCAR transaction set data; therefore no PAXLST was submitted.



# One Step Process

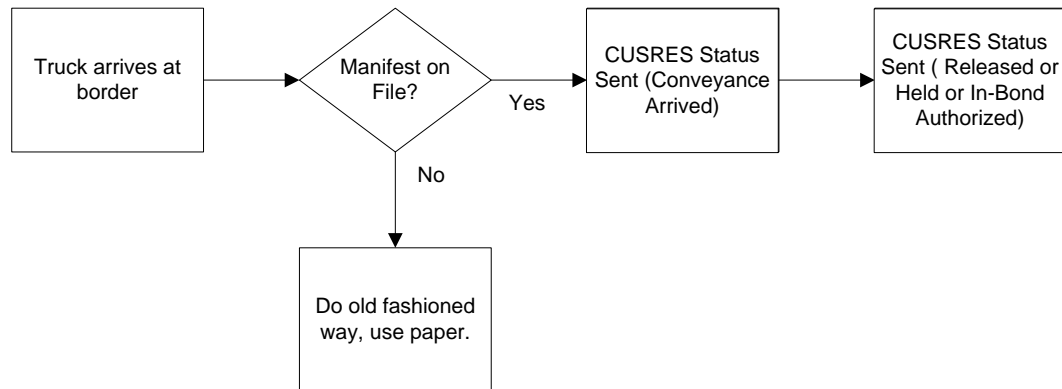
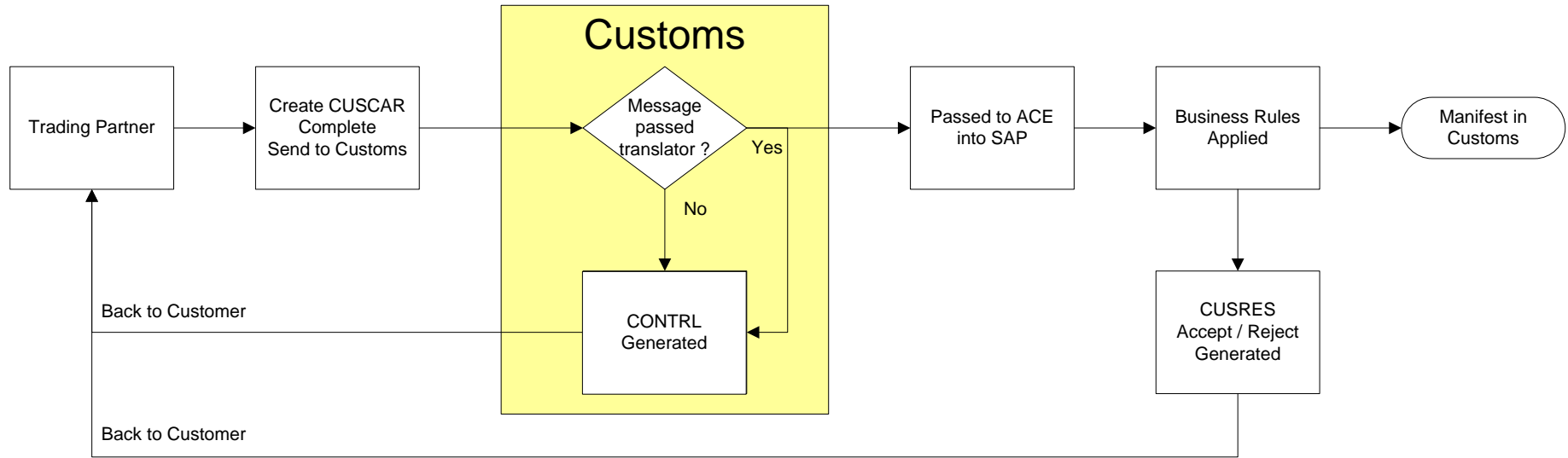


Figure 3-9. One Step process flow for a complete manifest



**NOTE** The complete CUSCAR transaction set below details information for the minimum number of required data elements and segments to push a transaction successfully through the ACE system.

**Example transaction set details a complete e-Manifest**

```

UNB+UNOA:4+LOCK:02+CBP-ACE-TEST:02+041016:1604+54++ACE
UNG+CUSCAR+LOCK:02+LOCK:02+041016:1604+54+UN+D:03B:
UNH+54+CUSCAR:D:03B:UN
BGM+85:::STANDARD+LOCK2453881GK011+22
DTM+132:200610312300:203
LOC+60+3004:77
NAD+CA+LOCK:172
NAD+VW+47192:109+++77 SUNSET STRIP+HOLLYWOOD+FL:163+30310
TDT+11++03+:::TR++I++:146:::16ABB43764376
TDT+11++03+:::TR++I++:274:::11223344
TDT+11++03+:::TR++I++:215:::HAULN:US
LOC+89+TX:163
CNI+1+:23
DOC+630+COMPLETE MANIFEST
RFF+AAM:LOCK2453881GK011
NAD+OS+++SHIPPING STUFF 4 U+555 LONG TRUCK
DRIVE+MIDLAND+TX:163+67743+US
NAD+CN+++WORKS SOMETIMES+777 RESEARCH
PARKWAY+SHREVEPORT+LA:163+77806+US
GID+1
PAC+108++COL
FTX+AAA+++LST2 BIG SHOCKS
MEA+AAI++K:750
UNT+20+54
UNE+1+54
UNZ+1+54
repeat
    
```

**TIP** The information in all the EDIFACT transaction sets are detailed in the EDIFACT Implementation Guides for CUSCAR, CUSREP, PAXLST, CUSRES, CNTROL and MEDPID.

CUSCAR Complete Transaction Set		
Segments	Description	Required
UNB	UNB+UNOA:4+LOCK:02+CBP-ACE-TEST:02+041016:1604+54++ACE	Mandatory
UNG	UNG+CUSCAR+LOCK:02+LOCK:02+041016:1604+54+UN+D:03B:	Mandatory
UNH	UNH+54+CUSCAR:D:03B:UN	Mandatory
BGM	BGM+85:::STANDARD+LOCK2453881GK011+22	Mandatory

	<p>C002/1001 – Customs Manifest = 85</p> <p>C002/1000 – STANDARD for standard Manifest</p> <p>C016/1004 – Trip number</p> <p>1225 – Message Function Code, Complete Manifest Final Transmission = 22</p>	
<b>DTM</b>	<p>DTM+132:200610312300:203</p> <p>C507/2005 Date or time or period function code qualifier</p> <p>C507/2380 Date or time or period text in the format CCYMMDDHHMM</p> <p>C507/2379 Format code</p>	Optional
<b>LOC</b>	<p>LOC+60+3004:77</p> <p>3227 Location Qualifier, place of arrival</p> <p>C517/3225 Location Name code, port code</p> <p>C517/1131 Code list identification code</p>	Option
<b>NAD</b>	<p>NAD+CA+LOCK:172</p> <p>3035 Party Function Code Qualifier, Carrier = CA</p> <p>C082/3039 Party Identifier, SCAC</p> <p>C082/1131 Code list identification code, Carriers = 172</p>	Mandatory
<b>NAD</b>	<p>NAD+VW+47192:109+++77 SUNSET STRIP+HOLLYWOOD+FL:163+30310</p> <p>3035 Party Function Code Qualifier, Responsible Party = VW</p> <p>C082/3039 Party Identifier, <b>ACE ID</b></p> <p>C082/1131 Code list identification code, Customs Indicator = 109</p> <p>C059/3042 Street</p> <p>3164 City Name</p> <p>C819/3229 Country sub-entity</p> <p>C819/1131 Code list identification code = 163</p> <p>3251 Postal Code</p>	Optional
<b>TDT</b>	<p>TDT+11++03+:::TR++I++:146::16ABB43764376</p> <p>8051 Transport Stage Code Qualifier</p> <p>C220/8067 Transport mode name code</p> <p>C001/8178 transport means description = TR</p> <p>8101 Transit direction indicator code = I</p> <p>C222/1131 Code List identification code = 146</p> <p>C222/8212 Transport means identification</p>	Optional

	name , VIN number	
<b>TDT</b>	TDT+11++03+:::TR++I++:274::11223344 8051 Transport Stage Code Qualifier C220/8067 Transport mode name code C001/8178 transport means description = TR 8101 Transit direction indicator code = I C222/1131 Code List identification code = 274 C222/8212 Transport means identification name, DOT number	Optional
<b>TDT</b>	TDT+11++03+:::TR++I++:215::HAULN:US 8051 Transport Stage Code Qualifier C220/8067 Transport mode name code C001/8178 transport means description = TR 8101 Transit direction indicator code = I C222/1131 Code List identification code = 215 C222/8212 Transport means identification name, license plate number	Optional
<b>LOC</b>	LOC+89+TX:163 3227 Location Function Code, place of registration C517/3225 location name code C517/1131 Code list Identification sub country	Optional
<b>CNI</b>	CNI+1+:23 Shipment level 1490 = submit number = 1 C503/1373 document status code, adding shipment details = 23	Optional
<b>DOC</b>	DOC+630+COMPLETE MANIFEST C002/1001 Document name code, shipping note = 630	Optional
<b>RFF</b>	RFF+AAM:LOCK2453881GK011 C506/1153 Reference code identifier, way bill number = AAM C506/1154 Reference identifier	Optional
<b>NAD</b>	NAD+OS+++SHIPPING STUFF 4 U+555 LONG TRUCK DRIVE+MIDLAND+TX:163+67743+US 3035 Party Function Code Qualifier, Responsible Party = OS C080/3036 Party Name C059/3042 Street Number	Optional

	<p>3164 CITY NAME  C819/3229 Country sub-entity  C819/1131 Code list identification code = 163  3251 Postal Code  3207 COUNTRY NAME Code</p>	
<b>NAD</b>	<p>NAD+CN+++WORKS SOMETIMES+777  RESEARCH  PARKWAY+SHREVEPORT+LA:163+77806+  US    3035 Party Function Code Qualifier,  Responsible Party = CN    C080/3036 Party Name  C059/3042 Street Number  3164 CITY NAME  C819/3229 Country sub-entity  C819/1131 Code list identification code = 163  3251 Postal Code  3207 COUNTRY NAME Code</p>	Optional
<b>GID</b>	<p>GID+1    1496 submit a sequence number</p>	Optional
<b>PAC</b>	<p>PAC+108++COL    7224 Submit number of packages = 108  C202/7065 submit package type = COL</p>	Mandatory
<b>FTX</b>	<p>FTX+AAA+++LST2 BIG SHOCKS    4451 TEXT SUBJECT CODE QUALIFIER  C108/4440 Text literal</p>	Mandatory
<b>MEA</b>	<p>MEA+AAI++K:750    6311 MEASUREMENT PURPOSE CODE  QUALIFIER, item weight  C174/6411 Measurement unit code = K  C174/6314 Measure, gross weight</p>	Mandatory
<b>UNT</b>	<p>UNT+20+54    0074 Number of segments in a message = 20</p>	Mandatory
<b>UNE</b>	<p>UNE+1+54</p>	Mandatory
<b>UNZ</b>	<p>UNZ+1+54</p>	Mandatory

### 3.5.2 Scenario 2 – The Multi-Step Process

This process requires a minimum five-part submission:

- An unassociated shipment is first submitted as a CUSCAR.

- A Trip shell is then submitted as a CUSREP.
- A PAXLST is submitted for crew information
- Another CUSREP transaction data set submission to link all the above
- The end of manifest submission is with a CUSREP

The manifesting carrier may send individual preliminary shipment manifests without identifying the trip, conveyance, crew, or equipment. When shipments are scheduled for movement, the manifesting carrier will transmit a CUSREP Customs Consist Information (Trip Shell Information) transaction set, a PAXLST (conveyance, crew, and equipment data) transaction set. The CUSREP is used to link the preliminary shipment numbers to the Trip and to also submit an indication that a crew and conveyance report previously submitted is now complete.

**TIP** The information in all the EDIFACT transaction sets are detailed in the EDIFACT Implementation Guides for CUSCAR, CUSREP, PAXLST, CUSRES, CNTRL and MEDPID.repeat

### Unassociated Shipment

For each unassociated shipment submitted, there is one unique shipment control number (SCN) see **RFF** segment, for example **LOCK0604141GK09**.

There could be numerous unassociated shipments submissions linked to one Trip shell (or all the unassociated shipments could be in an envelope) and PAXLST, with all shipment/trip linking taking place with one CUSREP submission.

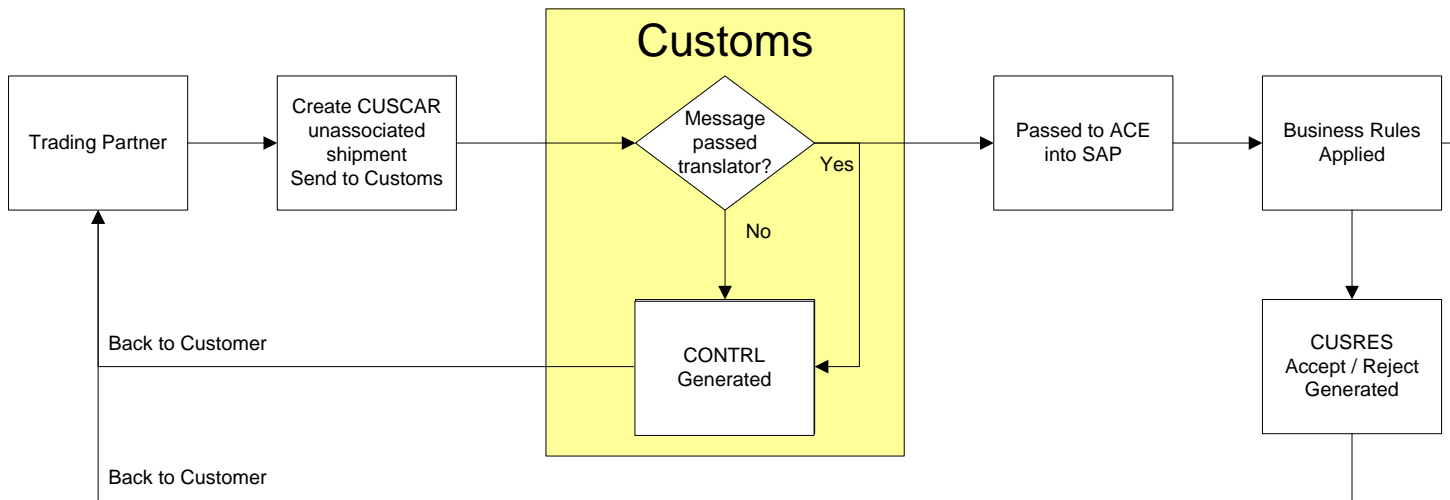


Figure 3-10. Unassociated shipment EDIFACT transaction set submission

### Example transaction set details an unassociated shipment

```

UNB+UNOA:4+LOCK:02+CBP-ACE-TEST:02+041016:1604+54++ACE
UNG+CUSCAR+LOCK:02+LOCK:02+041016:1604+54+UN+D:03B:
UNH+54+CUSCAR:D:03B:UN
BGM+87:::STANDARD+SYSTEM+2
LOC+60+3004:77
CNI+1+:23
  
```

RFF+AAM:LOCK0604141GK09  
 LOC+9+20195:78  
 NAD+OS+++SHIPPING STUFF 4 U+555 LONG TRUCK  
 DRIVE+MIDLAND+TX:163+67743+US  
 NAD+CN+++ME WORKS SOMETIMES+777 RESEARCH  
 PARKWAY+HAMMOND+LA:163+77806+US  
 GID+1  
 PAC+100++BOX  
 FTX+AAA+++TAMIYA XTREME TRUCK 1  
 MEA+AAI++L:100  
 UNT+13+54  
 UNE+1+54  
 UNZ+1+54

CUSCAR Transaction Set for Unassociated Shipment		
Segments	Description	Required
<b>UNB</b>	UNB+UNOA:4+LOCK:02+CBP-ACE-TEST:02+041016:1604+54++ACE	Mandatory
<b>UNG</b>	UNG+CUSCAR+LOCK:02+LOCK:02+041016:1604+54+UN+D:03B:	Mandatory
<b>UNH</b>	UNH+54+CUSCAR:D:03B:UN	Mandatory
<b>BGM</b>	BGM+87:::STANDARD+SYSTEM+2 C002/1001 – General cargo summary manifest report = 87 C002/1000 – STANDARD for standard Manifest C016/1004 – System for preliminary manifest 1225 – Message Function Code, preliminary manifest= 2	Mandatory
<b>LOC</b>	LOC+60+3004:77 3227 Location Qualifier, place of arrival C517/3225 Location Name code, port code C517/1131 Code list identification code	Optional
<b>CNI</b>	CNI+1+:23 Shipment level 1490 = submit number = 1 C503/1373 document status code, adding shipment details = 23	Optional
<b>RFF</b>	RFF+AAM: LOCK0604141GK09 C506/1153 Reference code identifier, way bill number = AAM C506/1154 Reference identifier	Optional

<b>LOC</b>	<p>LOC+9+20195:78</p> <p>3227 Port/point of loading, WHEN DE 3227 = 9 and the coded identifier is not known,</p> <p>THEN report the place or port of loading name in free form text.</p> <p>C517/3225 Customs foreign port location code = 20195</p> <p>C517/1131 Code list Identification sub country</p>	Optional
<b>NAD</b>	<p>NAD+OS+++SHIPPING STUFF 4 U+555 LONG TRUCK DRIVE+MIDLAND+TX:163+67743+US</p> <p>3035 Party Function Code Qualifier, Responsible Party = OS</p> <p>C080/3036 Party Name</p> <p>C059/3042 Street Number</p> <p>3164 CITY NAME</p> <p>C819/3229 Country sub-entity</p> <p>C819/1131 Code list identification code = 163</p> <p>3251 Postal Code</p> <p>3207 COUNTRY NAME Code</p>	Optional
<b>NAD</b>	<p>NAD+CN+++ME WORKS SOMETIMES+777 RESEARCH PARKWAY+HAMMOND+LA:163+77806+US</p> <p>3035 Party Function Code Qualifier, Responsible Party = CN</p> <p>C080/3036 Party Name</p> <p>C059/3042 Street Number</p> <p>3164 CITY NAME</p> <p>C819/3229 Country sub-entity</p> <p>C819/1131 Code list identification code = 163</p> <p>3251 Postal Code</p> <p>3207 COUNTRY NAME Code</p>	Optional
<b>GID</b>	<p>GID+1</p> <p>1496 submit a sequence number</p>	Optional
<b>PAC</b>	<p>PAC+100++BOX</p> <p>7224 Submit number of packages = 100</p> <p>C202/7065 submit package type = BOX</p>	Mandatory
<b>FTX</b>	<p>FTX+AAA+++TAMIYA XTREME TRUCK 1</p> <p>4451 TEXT SUBJECT CODE QUALIFIER</p> <p>C108/4440 Text literal</p>	Mandatory
<b>MEA</b>	<p>MEA+AAI++K:750</p> <p>6311 MEASUREMENT PURPOSE CODE</p>	Mandatory

	QUALIFIER, item weight C174/6411 Measurement unit code = K C174/6314 Measure, gross weight	
<b>UNT</b>	UNT+13+54 0074 Number of segments in a message = 13	Mandatory
<b>UNE</b>	UNE+1+54	Mandatory
<b>UNZ</b>	UNZ+1+54	Mandatory

The following diagram demonstrates the process flow of the individual transaction set submissions for CUSREP trip shell submission, PAXLST, CUSREP shipment/trip linking and an End of Manifest.

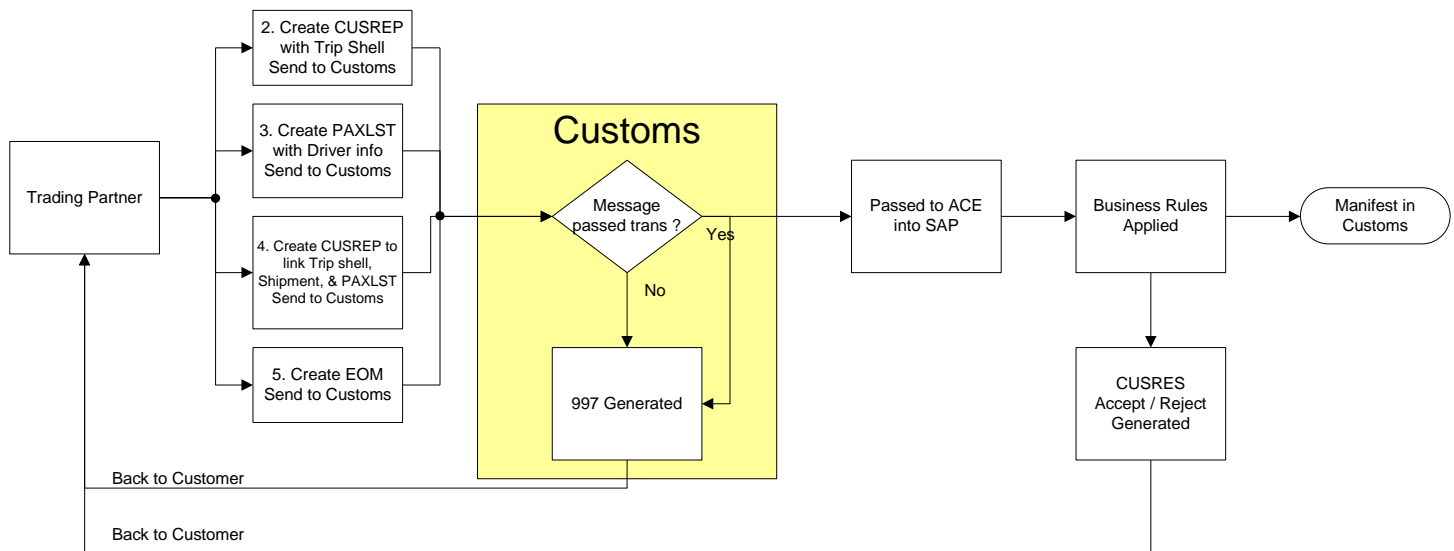


Figure 3-11 – Process flow for CUSREP and PAXLST

### Trip shell submission with Mode of Transportation (MOT)

A trip shell is an empty trip with no conveyance, no equipment, and no shipments. For every shipment(s) submitted there is one unique Trip number, see **BGM** segment, for example, **LOCK20065999GK05**.

#### Example transaction set details a trip shell

```

UNB+UNOA:4+LOCK:02+CBP-ACE-TEST:02+041014:1953+55++ACE
UNG+CUSREP+LOCK:02+LOCK:02+041016:1604+55+UN+D:03B:
UNH+55+CUSREP:D:03B:UN
BGM+336:::STANDARD+ LOCK20065999GK05+2
DTM+132:200609302300:203
LOC+60+3004:77
NAD+CA+LOCK:109
TDT+11++03+:::TR++I++:146:::16ABB43764376 (TDT workaround)
  
```



LOC+89+TX:163  
 UNT+10+55  
 UNE+1+55  
 UNZ+1+55

**IMPORTANT NOTE** There was a recent change in SAP that now requires the Mode of Transportation (MOT) to be present. This is somewhat of a problem with EDIFACT because the MOT flag is in the TDT segment but to create a trip shell in EDIFACT the TDT segment is not required. That is, until now. At this time, the workaround is to include a single TDT segment with a dummy VIN so SAP does not reject the trip shell.

CUSREP Trip Shell Transaction Set		
Segments	Description	Required
UNB	UNB+UNOA:4+LOCK:02+CBP-ACE-TEST:02+041014:1953+55++ACE	Mandatory
UNG	UNG+CUSREP+LOCK:02+LOCK:02+041016:1604+55+UN+D:03B:	Mandatory
UNH	UNH+54+CUSCAR:D:03B:UN	Mandatory
BGM	BGM+336:::STANDARD+ LOCK20065999GK05+2  C002/1001 – Document name code when reporting a trip, = 336  C002/1000 – STANDARD for standard Manifest  C016/1004 – System for preliminary manifest  1225 – Message Function Code, preliminary manifest= 2	Mandatory
DTM	DTM+132:200609302300:203  C507/2005 Date or time or period function code qualifier  C507/2380 Date or time or period text in the format CCYYMMDDHHMM  C507/2379 Format code	Optional
LOC	LOC+60+0901:77  3227 Location Qualifier, place of arrival  C517/3225 Location Name code, port code  C517/1131 Code list identification code	Optional
NAD	NAD+CA+LOCK:109  3035 Party Function Code Qualifier, Carrier = CA  C082/3039 Party Identifier, SCAC  C082/1131 Code list identification code, Customs indicator = 109	Optional

<b>TDT</b>	TDT+11++03+:::TR++I++:146::16ABB43764376 8051 Transport Stage Code Qualifier C220/8067 Transport mode name code C001/8178 transport means description = TR 8101 Transit direction indicator code = I C222/1131 Code List identification code = 146 C222/8212 Transport means identification name , VIN number	Mandatory
<b>LOC</b>	LOC+89+TX:163 3227 Location Function Code, place of registration C517/3225 location name code C517/1131 Code list Identification sub country	Mandatory
<b>UNT</b>	UNT+8+55	Mandatory
<b>UNE</b>	UNE+1+55	Mandatory
<b>UNZ</b>	UNZ+1+55	Mandatory

### Adding Crew Information using an ACE ID with a PAXLST

For any unassociated shipment(s), a PAXLST transaction set submission is necessary. It is possible to submit all of the crew and conveyance information, but it is advantageous in EDIFACT to use either ACE or FAST IDs which have initially been registered in the ACE system. The ACE or FAST ID's if known are usually sent in the CUSCAR. The CUSCAR can be used to transmit complete manifests. The PAXLST is used when the ACE ID's or FAST ID's are not known or don't exist. It is used with a CUSREP. An example of the PAXLST would be to use a driver's name and other personal data and leave the ACE ID's in the CUSCAR section.

NOTE The ACE ID below is located in the NAD segment, see bold "14102."

#### Example transaction set details crew information

```
UNB+UNOA:4+LOCK:02+CBP-ACE-TEST:02+041013:1901+16++ACE
UNG+PAXLST+LOCK:02+LOCK:02+041016:1604+16+UN+D:03B:
UNH+16+PAXLST:D:03B:UN
BGM+10+ LOCK20065999GK05+2
RFF+ABO:Using ACE ID
TDT+11++03++LOCK:172
DTM+132:20060430:102
NAD+VW+14102:109+++77SUNSET STRIP+HOLLYWOOD+FL:163+30110+US
UNT+7+16
UNE+1+16
UNZ+1+16
```

PAXLST Transaction Set		
Segments	Description	Required
<b>UNB</b>	UNB+UNOA:4+LOCK:02+CBP-ACE-	Mandatory

	TEST:02+041013:1901+16++ACE	
<b>UNG</b>	UNG+PAXLST+LOCK:02+LOCK:02+041016:1604+16+UN+D:03B:	Mandatory
<b>UNH</b>	UNH+16+PAXLST:D:03B:UN	Mandatory
<b>BGM</b>	BGM+10+LOCK20065999GK05+2 C002/1001 Document Name Code, party information = 10 C106/1004 Document Identifier, Trip number 1225 Message Function Code, Addition = 2	Mandatory
<b>RFF</b>	RFF+ABO:Using ACE ID C506/1153 Reference code qualifier, Originator's reference = ABO	Optional
<b>TDT</b>	TDT+11++++LOCK:172 8051 Transport Stage Code Qualifier, At border = 11 C040/3127 Carrier identifier, SCAC C040/1131 Code list identification code = 172	Mandatory
<b>DTM</b>	DTM+132:20060430:102 C507/2005 Date or time or period function code qualifier = 132 C507/2380 Date or time or period text, submit date C507/2379 Date or time or period format code = 102	Mandatory
<b>NAD</b>	NAD+VW+14102:109+++77SUNSET STRIP+HOLLYWOOD+FL:163+30110+US 3035 Party Function Code Qualifier, Responsible Party = VW C082/3039 Party Identifier, <b>ACE ID = 14102</b> C082/1131 Code list identification code, Customs Indicator = 109 C059 Street 3164 City Name C819/3229 Country sub-entity C819/1131 Code list identification code = 163 3251 Postal Code	Optional
<b>UNT</b>	UNT+7+16	Mandatory
<b>UNE</b>	UNE+1+16	Mandatory
<b>UNZ</b>	UNZ+1+16	Mandatory

### Linking Shipments to Trip

Use a **CUSREP** to link a unique Trip to a shipment. Make sure that the same SCN for the shipment is the same

The BGM segment contains the same trip number as the Trip shell. And that the DOC segment C503/1373 = 23.

#### Example transaction set details the linking the trip shell to the shipment

```
UNB+UNOA:4+LOCK:02+CBP-ACE-TEST:02+041014:1953+6++ACE
UNG+CUSREP+LOCK:02+LOCK:02+041016:1604+6+UN+D:03B:
UNH+6+CUSREP:D:03B:UN
BGM+336:::STANDARD+LOCK20065999GK05+4
DTM+132:200609302300:203
LOC+60+3004:77
DOC+700+:23
RFF+AAM:LOCK0604141GK09
DTM+756:200609302300:203
NAD+CA+LOCK:172
TDT+11++03+++I++:109:::10000016
EQD+TL+10000012:109
UNT+11+6
UNE+1+6
UNZ+1+6
```

CUSREP Transaction Set		
Segments	Description	Required
<b>UNB</b>	UNB+UNOA:4+LOCK:02+CBP-ACE-TEST:02+041014:1953+6++ACE	Mandatory
<b>UNG</b>	UNG+CUSREP+LOCK:02+LOCK:02+041016:1604+6+UN+D:03B:	Mandatory
<b>UNH</b>	UNH+6+CUSREP:D:03B:UN	Mandatory
<b>BGM</b>	BGM+336:::STANDARD+LOCK20065999GK05+4  C002/1001 – Document name code when reporting a trip, = 336  C002/1000 – word ‘STANDARD’ for standard Manifest  C016/1004 – Document identifier submit SCAC code + trip number  1225 – Message Function Code, preliminary manifest, <b>change</b> = 4	Mandatory
<b>DTM</b>	DTM+132:200609302300:203  C507/2005 Date or time or period function code qualifier = 132  C507/2380 Date or time or period text in the format CCYYMMDDHHMM	Mandatory

	C507/2379 Format code indicating CCYYMMDDHHMM format used = 203	
<b>DOC</b>	DOC+700+:23 C002/1001 Document Name code when reporting a trip = 700 C503/1373 Document Status code, when adding shipments to a trip = 23	Mandatory
<b>RFF</b>	RFF+AAM:LOCK0604141GK09 C506/1153 reference code qualifier, waybill number = AAM C506/1154 Reference identifier, bill number = SCAC code + trip number	Mandatory
<b>DTM</b>	DTM+756:200609302300:203 C507/2005 Date or time or period function code qualifier, arrival at destination = 756 C507/2380 Date or time or period text in the format CCYYMMDDHHMM C507/2379 Format code indicating CCYYMMDDHHMM format used = 203	Optional
<b>NAD</b>	NAD+CA+LOCK:172 3035 Party Function code, carrier = CA C082/3039 SCAC C082/1131 Code list identifier, carriers = 172	Mandatory
<b>TDT</b>	TDT+11++03+++I++:109::10000016 8051 Transport Stage Code Qualifier, At border = 11 C220/8067 Transport mode name code, road transport = 03 8101 Transit direction indicator code, importation, foreign to domestic = I C222/1131 Code list identification code, customs indicator = 109 C222/8212 transport means identification name, ACE conveyance ID	Mandatory
<b>EQD</b>	EQD+TL+10000012:109 8053 Equipment Type Code Qualifier = TL C237/8260 Equipment Identifier, Equipment ACE ID C237/1131 Code list identification code for ACE ID = 109	Mandatory
<b>UNT</b>	UNT+11+6	Mandatory
<b>UNE</b>	UNE+1+6	Mandatory

UNZ	UNZ+1+6	Mandatory
-----	---------	-----------

### End of Manifest for the Trip

The manifesting carrier (if they are transmitting EDIFACT) will be required to transmit a CUSREP transaction set with a code '6' 'End of Manifest' in the **BGM segment** to signify there are no shipments to follow.

#### Example transaction set details for the Ending a Manifest

```
UNB+UNOA:4+LOCK:02+CBP-ACE-TEST:02+041014:1953+6++ACE
UNG+CUSREP+LOCK:02+LOCK:02+041016:1604+6+UN+D:03B:
UNH+CUSREP6+CUSREP:D:03B:UN
BGM+336:::STANDARD+ LOCK20065999GK05+6
DTM+132:200604302300:203
LOC+60+3004:77
UNT+5+CUSREP6
UNE+1+6
UNZ+1+6
```

CUSREP Transaction Set		
Segments	Description	Required
UNB	UNB+UNOA:4+LOCK:02+CBP-ACE-TEST:02+041014:1953+6++ACE	Mandatory
UNG	UNG+CUSREP+LOCK:02+LOCK:02+041016:1604+6+UN+D:03B:	Mandatory
UNH	UNH+CUSREP6+CUSREP:D:03B:UN	Mandatory
BGM	BGM+336:::STANDARD+ <b>LOCK20065999GK05+6</b>  C002/1001 – Document name code when reporting a trip, = 336  C002/1000 – word 'STANDARD' for standard Manifest  C016/1004 – Document identifier submit SCAC code + trip number  1225 – Message Function Code, confirmation of a trip, <b>confirmation</b> = 6	Mandatory
DTM	DTM+132:200604302300:203  C507/2005 Date or time or period function code qualifier = 132  C507/2380 Date or time or period text in the format CCYYMMDDHHMM  C507/2379 Format code indicating CCYYMMDDHHMM format used = 203	Optional
LOC	LOC+60+3004:77	Optional

	3227 Location Qualifier, place of arrival C517/3225 Location Name code, port code C517/1131 Code list identification code	
<b>UNT</b>	UNT+5+6	Mandatory
<b>UNE</b>	UNE+1+6	Mandatory
<b>UNZ</b>	UNZ+1+6	Mandatory

**NOTE** After the 353 submission, there is no need to send a second CUSREP for that Trip, see Appendix A - Troubleshooting the Three-Step Process.

### 3.6 Accept/Reject Notification (CUSRES)

This Customs Response Message (CUSRES) permits the transfer of data from a customs administration

- to acknowledge the receipt of the message
- to indicate whether the information received is correct or if there are errors (that is, accepted without errors, accepted with errors, rejected, etc.)
- to inform the sender of the status of the customs declaration (that is, goods released, goods for examination, documents required, etc.)
- to transmit additional information as agreed between parties (that is, tax information, quantity information, etc.)
- to respond to batched messages (that is, ,CUSCAR, CUSREP, PAXLST).

**NOTE** This message is not meant to replace the functionality of the CONTRL message

The transaction set can be used by U.S. CBP to report errors and discrepancies discovered in the U.S. Customs transactions sets to carriers, terminal operators, port authorities, and service centers. An outbound CUSRES transaction set should **always** be displayed after an e-manifest submission.

The CUSRES transaction set will also display errors from the original transaction in the **ERP (Error Point Detail)** segments are used to transmit information in a free-form format, if necessary, for comment or special instruction.

Example CUSRES for a manifest with no errors.

```
UNB+UNOA:4+CBP-ACE-TEST:ZZ+LOCK:02+20061108:0939+1778++ACETEST
UNG+CUSRES+CBP-ACE-TEST:ZZ+LOCK:ZZ+20061108:0939+1778+UN+D:03B
UNH+1778+CUSRES:D:03B:UN
BGM+132:::ST+LOCK2453892GK011
DTM+132:200611302300:203
TDT+11++03+:::TR+LOCK+I++:146:::16ABB43764376
TDT+11++++++:274:::11223344
LOC+60+3004
```

ERP+1  
 ERC+081  
 FTX+AAO+++Manifest Transmittal  
 UNT+10+1778  
 UNE+1+1778  
 UNZ+1+1778

There are three segments that report error/status information in the Trip and shipment levels. They are:

**ERP** – Error Point details reports information regarding the status of the Manifest on the trip and shipment levels. It also acts as the trigger segment to report status notification in the following ERC and FTX segments.

**ERC** - Application Error Information transmits Customs-assigned Status Notification event code for notifications pertaining to Manifest data on a trip or shipment level. The text translation of this event code is provided in FTX segment.

**FTX** – Free Text segment provides an explanation and/or supplementary information related to the specified application error.

Example CUSRES outbound with errors:

An e-manifest with trip and shipment information for one shipment was submitted. An out bound transaction set displays as follows in the ACE Raw Data Edits screen:

UNB+UNOA:4+CBP-ACE-TEST:ZZ+8OCE:02+20060530:1409+316++ACETEST  
 UNG+CUSRES+CBP-ACE-TEST:ZZ+8OCE:ZZ+20060530:1409+316+UN+D:03B  
 UNH+316+CUSRES:D:03B:UN  
 BGM+132:::ST+8OCE2453882AK519  
 DTM+132:200605312300:203  
 TDT+11++03+:::TR+8OCE+I++:146:::16ABB43764376  
 TDT+11++++++:274:::11223344  
 LOC+60+3004  
 RFF+ZZZ:FR  
 RFF+EQ:22222222  
 RFF+ACD:HAULN  
 LOC+89+TX:163  
 LOC+89+US:162

**ERP+1**

**ERC+509**

**FTX+AAO+++Manifest Rejected**

**ERP+1**

**ERC+469**

**FTX+AAO+++Equip Lic Plate Missing**

DOC+:ZZZ  
 NAD+VW+14102:109+++77 SUNSET STRIP+HOLLYWOOD+FL+30310  
 UNT+20+316  
 UNE+1+316  
 UNZ+1+316

There are two ERP error messages:

**ERC+509**



**FTX+AAO+++Manifest Rejected****ERC+469****FTX+AAO+++Equip Lic Plate Missing**

**NOTE** For further information regarding error codes, reference the CUSRES Implementation Guide, [http://www.cbp.gov/xp/cgov/toolbox/about/modernization/carrier\\_info/ace\\_edi\\_dr\\_afts/edi\\_messages/](http://www.cbp.gov/xp/cgov/toolbox/about/modernization/carrier_info/ace_edi_dr_afts/edi_messages/)

## 3.7 Modifying Trips and Shipments

The following segment information only lists the segments that need to be added or changed for transaction sets. For actual transaction set examples, see Appendix C – EDI Transaction set examples.

### 3.7.1 Updating a Trip

Updating a trip takes place when for example a CUSCAR complete has been submitted and the manifest is returned to preliminary = PL.

**Note** This manifest has not been sent to CBP.

**For example:** If a carrier submits a **complete** CUSCAR transaction set with three shipments and one of the shipments is rejected. The CUSCAR transaction set is **returned to preliminary** with only two of the shipments accepted; the third shipment is missing due to it being rejected.

There are two options:

- First Option - submit another CUSCAR transaction set with the following:
  - BGM+87::STANDARD+LOCK2453892GK011+4
 

The document code “87” indicates that the transaction set is a preliminary and the message function code “4” means that the shipment is being updated.
- Add the shipment information.
- Then submit another CUSCAR transaction set to end the manifest.
  - The CUSCAR requires only two segments the BGM and the DTM. Note complete C002/1001 Document Name Code - Customs manifest = 85, use “6” when reporting an end of Manifest

```
UNB+UNOA:4+ACME:02+CBP-ACE-TEST:02+041016:1604+54++ACE
UNG+CUSCAR+ACME:02+ACME:02+041016:1604+54+UN+D:03B:
UNH+54+CUSCAR:D:03B:UN
BGM+85:::STANDARD+ACME2454003CQ011+6
DTM+132:200611301900:203
UNT+4+54
UNE+1+54
```

UNZ+1+54

- Second Option - submit a CUSREP transaction set to close the manifest with the four shipments.

**NOTE** There is no amendment code because the manifest is currently in a preliminary status. This kind of e-manifest submission can be used to update shipment(s) with the same trip number as the original submitted complete CUSCAR.

## 3.8 Amending a Trip or Shipment using the CUSCAR

Amending a Trip or Shipment can only take place after the trip has a complete or if it has had an end of manifest CUSREP transaction set submitted. The following are examples of Trip and Shipment amendments.

### 3.8.1 Amending a Trip

Submission of the amendment takes place after the initial CUSCAR (22) complete. Update the following:

- **BGM+85::STANDARD+LOCK2453881CQ011+5**
  - 1225 – Message Function Code, replace = 5
- Addition of RFF Position 0070 = RFF+RFA:03
  - C506/1153 Reference code qualifier, reason for amendment = RFA
  - C506/1154, Amendment Code, clerical error in manifesting = 03

Make appropriate updates to the Trip segment of the transaction set.

### 3.8.2 Amending Shipments

Submission of the amendment takes place after the initial CUSCAR (22) complete. Update the following:

- **BGM+85::STANDARD+LOCK2453881CQ011+5**
  - 1225 – Message Function Code, replace = 5
- **CNI+1+:24**
  - C503/1373, Document status code, modifying shipment = 24
- Addition of RFF Position 0510 = RFF+RFA:03
  - C506/1153 Reference code qualifier, reason for amendment = RFA
  - C506/1154, Amendment Code, clerical error in manifesting = 03

Make appropriate updates to the Shipment segment of the transaction set.

## 3.9 Deleting versus delinking shipments

### 3.9.1 Delinking shipments from Trips

Use a **CUSREP** to delink a unique Trip to a shipment. Make sure that the same SCN for the shipment is the same in the RFF segment position. Update the following:

- The BGM segment contains the same trip number as the Trip shipment that is to be delinked. Position 1225 Message function code, change = 4
  - BGM+336:::STANDARD+**ACME20065999GK03**+4
- Update DOC segment position 0160, C503/1373 Document status code when delinking shipments from a trip =22
  - For example, DOC+700+22
- Include the RFF segment position 0170 with the SCN to be delinked.
  - For example, RFF+AAM:**ACME0604141GK07**

### 3.9.2 Deleting Trips

**NOTE** Deleting a trip also deletes all of the shipments associated with that trip.

Use a **CUSCAR** transaction set to delete a Trip, in the BGM segment data element include the trip number to be deleted and position 1225 = 3

**For example:** BGM+87:::STANDARD+ACME20065999GK03+3

### 3.9.3 Deleting Shipments

Use a **CUSCAR** transaction set to delete a shipment, when the word 'SYSTEM' is reported in C106/1004 and CNI Segment, C503/1373 = 22, the shipment is deleted.

Update the following segments:

- BGM segment data element position 1225 = 3
- Include the RFF segment position 0380 with the SCN to be deleted
  - For example, RFF+AAM:LOCK060423MS01D

**NOTE** You can only delete a shipment this way that is unassociated which means it cannot currently be attached to a trip.

#### Sample shipment delete test case

```
UNB+UNOA:4+LOCK:02+CBP-ACE-TEST:02+041016:1604+59++ACE
UNG+CUSCAR+LOCK:02+LOCK:02+041016:1604+59+UN+D:03B:
UNH+59+CUSCAR:D:03B:UN
BGM+87:::STANDARD+SYSTEM+3
CNI+1+:22
RFF+AAM:LOCK060423MS01D
GID+1
FTX+AAA+++REQUIRED
UNT+7+59
UNE+1+59
UNZ+1+59
```